

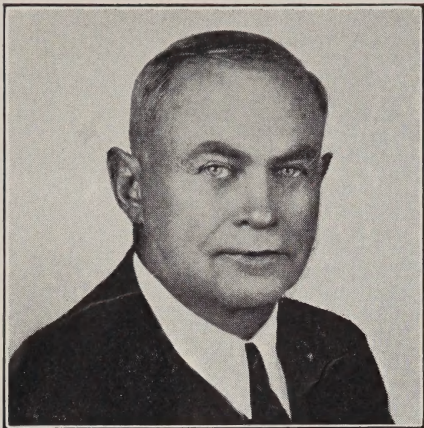
Historic, Archive Document

Do not assume content reflects current scientific knowledge, policies, or practices.

The image features three large, fully bloomed dahlias and one bud. The dahlias have numerous long, thin, pointed petals that are light pink on the outside and bright yellow in the center. The petals are arranged in a dense, multi-layered pattern. The bud is smaller, rounded, and has a yellowish-orange hue. The stems and leaves are green and are set against a solid black background. The text 'GILL'S Wave Crest Dahlia' is printed in the upper right corner, and 'GILL BROS. SEED CO. 1941' is printed in large, bold letters at the bottom.

GILL'S
Wave Crest Dahlia

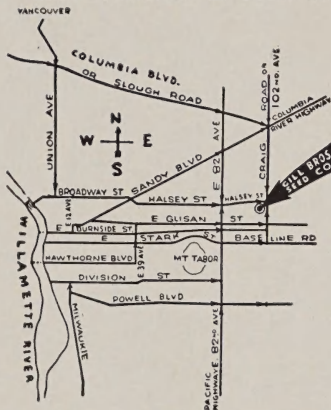
GILL BROS.
SEED CO. 1941



EDW. E. GILL

HOW TO REACH THE FARM

Retail salesrooms at warehouse and office.



Take 90th Avenue street car on Montavilla line to 90th Avenue, thence six blocks east and four north to farm.

By auto to 82nd Avenue or 102nd Avenue thence to Halsey Street.

Office and farm at 99th Avenue and Halsey (See diagram map).

Visitors are always welcome at our farm. Dahlia gardens are at their best in September and October.

PERENNIAL ROCK GARDEN COLLECTION

We offer 12 packets of rock garden perennials, worth \$1.70 for \$1.00, postpaid.

ALYSSUM, Saxatile Compactum, yellow	.10
ANEMONE, Pulsatilla, purple	.15
ARABIS, Alpina, white	.10
AUBRIETIA, Large Flowering Hybrids, mixed	.15
GEUM, Mrs. Bradshaw, red	.10
HELIANTHEMUM, (Sun Rose) Mutabile, mixed	.10
HEUCHERA, (Coral Bells) Sanguinea	.25
LINUM, Flavum, yellow	.15
PRIMROSE, Polyanthus, Veris, mixed	.15
TUNICA, Saxifraga, rose	.10
VIOLA, Jersey Gem, deep violet blue	.25
WALLFLOWER, Siberian, orange	.10

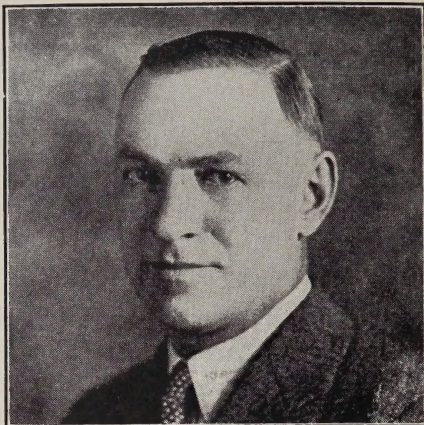
\$1.70

FREE BULLETINS

We offer free on request the following bulletins written by Ray W. Gill: Lawn Culture, Dahlia Culture, Fall Gardens, Fertilizers and How to Use Them.

GIANT ZINNIA COLLECTION

We offer ten packets named Dahlia Flowered and Monster type Zinnias, our selection, each a different variety and worth \$1.00 for 60c postpaid.



RAY W. GILL

ANNUAL CUT FLOWER COLLECTION

Eight packets of easy to grow annuals, every one suitable for cutting, worth 85c for 50c postpaid.

ASTER, Imbricated Pompon, mixed	.10
CALENDULA, Radio	.10
CLARKIA, Sweetheart	.10
COSMOS, Sensation, mixed	.10
GAILLARDIA, Indian Chief	.10
LARKSPUR, White King	.10
SCABIOSA, Rosette	.15
ZINNIA, Mammoth Dahlia, mixed	.10

\$.85

CHRYSANTHEMUM PLANTS

Ready during April and May

LARGE VARIETIES

Rooted Slips 25c each, \$2.50 per dozen postpaid.
ANGELO, Early, large, pink incurve.
MRS. H. E. KIDDER, Extra large bright yellow incurve.
MRS. HELEN K. JOHNSON, Extra large dark yellow, irregular petals.
NORMA, Large anemone, pink with yellow cushion.
OREGONIAN, Early, large, lavender incurve.
RAYONNANTE, Large rose pink, long cord-like petals.
RED WAITE, Extra large, red and gold incurve.

POMPON VARIETIES

Rooted Slips 15c each, \$1.50 per dozen postpaid.
GARNET GEM, Garnet red.
ROSE CHOCHARD, Large, early lavender with silver sheen.
SOURCE D'OR, Bronzy orange.

CUSHION MUMS

Rooted Slips 15c each, \$1.50 per dozen postpaid.

PINK CUSHION OR AZALEAMUM
BRONZE CUSHION
WHITE CUSHION
RED CUSHION
HARVEST GOLD CUSHION

Write for list of additional varieties and cultural directions.

HOME BEAUTIFUL SWEET PEAS

Twelve regular sized packets of Spencer Sweet Peas, our selection of varieties, all different, worth \$1.20, sent postpaid for 60c. Six packets postpaid for 35c. These will be chosen to give a good range of color.

"BIG FOUR" DAHLIA COLLECTION

Four outstanding dahlias, all fine varieties, worth \$2.25, sent postpaid for \$1.25. (Save \$1.00).

FORT MONMOUTH, I.D. Rich, crimson maroon	.50
PALO ALTO, S.C. Clear, rich salmon	.50
THE COMMODORE, I.D. Bright yellow	.50
WASHINGTON GIANT, I.D. Orchid pink and lavender, blend of white at center	.75

\$2.25

Thirty-first Annual Catalog

Gill Bros. Seed Company

MONTAVILLA STATION, PORTLAND, ORE.,
Main Office, Farm and Retail Store
N. E. 99th Ave. and Halsey St. Tabor 2683

BRANCH RETAIL STORE
832 S. W. 4th Avenue, near Yamhill Street
Portland, Oregon

AFTER APRIL 1, 1941, OUR TELEPHONE NUMBER WILL BE TABOR 1173.

Dear Customers and Readers:

This is not a large, pretentious catalog, yet it brings you an honest message about seeds, bulbs, etc. The high quality of our goods is favorably known throughout the Northwest, besides which we have many customers throughout the nation. For years we have been introducing special strains of seeds here on our own farms and many new varieties of our own origin are recognized as leaders by market gardeners.

We specialize in Northwest grown seeds and where these are not obtainable we procure the best without regard to cost from the world's best growers. Seeds grown in moderate summer and winter conditions of the Northwest have great vitality and vigor. Northwest grown seeds are indicated in this catalog with a star. If you have not tried our seeds, please give us a trial order. Many of the largest growers and associations in the Northwest depend on our goods. Order early, as some varieties are short.

Our catalog has been prepared with the desire to have it sensible and free from exaggeration. The cuts used are practically all made from photographs taken from samples grown by ourselves and are reasonable illustrations of the results obtained from our seeds. We are opposed to filling our catalog with a long list of worthless novelties and are confining our list to the fewest possible varieties, and introducing only those new sorts which have some added value over other introductions. Those who receive more than one copy of our catalog will confer a favor by handing it to someone interested.

Our files show us the names of all who have ever sent us an order. To these we mail our catalog each year, and we also mail our catalog again to all who have received our catalog the first time last season, regardless whether they sent us an order or not. However, we will send catalogs free upon request. All members of a family should order under one name.

OUR WARRANTY

We believe our seeds, plants and bulbs to be of good germination, healthy and true to name. However, should they prove otherwise, we agree to replace the goods or refund the purchase price thereof. Beyond such replacement we assume no liability whatsoever and will not be responsible for the crop. GILL BROS. SEED CO.

MISTAKES

Like all human beings, we are apt to make mistakes, and if an error occurs we will consider it a favor to be notified at once so that we can rectify the oversight.

If you have a complaint, tell us first. In the rush of spring business, mistakes may happen; if so, tell us pleasantly about it and be assured of courteous treatment.

SUBSTITUTION

IN VIEW OF THE FACT THAT SOME KINDS OF SEEDS ARE SHORT THIS YEAR, we would suggest that customers give as much as possible their permission for us to substitute the nearest variety to the one ordered in case we should be sold out. On items of small importance, or during the planting season, when time is precious, we may occasionally send other sorts if out of the ones ordered, but such substitutions may be returned for credit if unsatisfactory to the purchaser.

VEGETABLE SEED SUBJECT TO CHANGE IN EXTREME CASES

We expect to be able to maintain the prices quoted in this catalog, but owing to constantly changing conditions, disturbing replacement values, we must reserve the right to make advances on such items as might otherwise be sold at a loss.

HELPFUL SUGGESTIONS

We are always willing to offer any assistance in our power regarding culture, best varieties for your soil and market, etc. We will also be glad to consider any suggestions you may wish to make to us.

HOW TO ORDER

Order early, as there is a heavy demand on some stocks and they may be exhausted.

Remittance must accompany your order. Stamps are accepted up to \$1.00. Money Orders, Express Orders, Bank Drafts and Certified Checks are preferred, although other checks are accepted for collection. Prices in this catalog marked "Not Prepaid" do not cover shipping expenses.

Except where noted "Not Prepaid," all prices are postpaid.

All prices up to and including one pound include shipping expenses and for more only when indicated.

Give shipping instructions and write your name and address plainly on your order.

Write your correspondence on a separate sheet from your order. The seed season is a rush season.

SAVE MONEY BY PARCEL POST. PLEASE READ

In ordering seeds in quantity you can save money by using our prices, marked "Not Prepaid" in this catalog. Simply add postage to these prices at the zone rate. In case you do not know the zone to Portland, simply include extra and mark order "postage allowance." Any overrun will be refunded to you.

PRACTICAL EXPERIENCE

As market gardeners and the many tests we have made for years, has given us a thorough knowledge of the varieties best suited for our climate, and aside from those varieties which we grow, has enabled us to secure our seed from the best sources. In that respect we differ from the average seed store where the experience is more from a selling standpoint.

WE SPECIALIZE IN MARKET GARDENER TRADE

Thousands of market gardeners all over the United States look to us for high-grade seeds. If you buy in quantities, write us a list giving variety and quantity and we will be glad to quote our gardener rates.

PRESS OF RYDER PRINTING CO. 16-1027 S. W. Fifth Avenue, Portland, Oregon

VEGETABLES

ARTICHOKE

LARGE GREEN GLOBE—The green buds are used. Start in hotbeds. They can be grown successfully in the Northwest. Postpaid. Pkt. 10c; oz. 60c.

PLANTS—Postpaid, 25c each; 3 for 50c; doz. \$2.00. Ready after March 1st.

***JERUSALEM**—The tubers are used for stock feed. Postpaid. 3 lbs. 50c. Not prepaid. 100 lbs. @ \$2.25.

ASPARAGUS

CULTURE—The seed is of slow germination and should be planted early in the season. Plant roots in well drained soil about 2 feet apart in the row and five to six feet between rows.

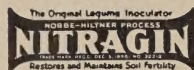
MARY WASHINGTON—Large, heavy yielding with large green stalks of fine quality. Practically immune to rust and other diseases. Owing to its great vigor it can be cut sooner from time of planting. We carry a special, selected strain. Postpaid. Pkt. 5c; oz. 20c; 1 lb. 35c; lb. \$1.00.

ASPARAGUS ROOTS

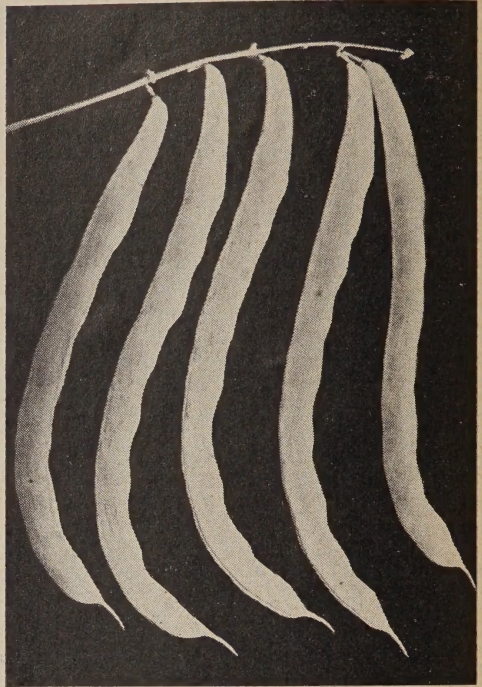
Two year roots simply means a grade for size only. They are one year growth.

MARY WASHINGTON—2 year roots (No. 1 size) postpaid. Doz. 50c; 50 @ \$1.00; 100 @ \$1.50. Not prepaid, 1000 @ \$7.00; 3000 or more @ \$6.50.

Northwest grown seeds are indicated in this catalog with a star (*). Quality, not price is the first consideration in buying seed. Considering quality, our prices are reasonable.



Inoculate all legumes
with Nitragin.
See page 16.



Beans, Gill's Delicious Giant

BUSH BEANS

CULTURE—Plant about May 1st for early beans, or as soon as the ground becomes warm, in rows 3 feet apart. Cover from 1½ to 3 inches deep according to weather conditions. Large seeded beans require warmer weather to germinate than small beans. Never cultivate or hoe beans when the foliage is wet from dew or rains, as it will cause rust.

PRICES—Unless noted are uniformly: Postpaid. Pkt. 10c; ½ lb. 20c; lb. 35c. Not prepaid, lb. 25c; 5 lbs. of one variety @ 20c lb. Write for prices on larger quantities.

DWARF KENTUCKY WONDER—(The Comadore). Green pods of excellent quality, measuring 7 to 9 inches; nearly straight, very fleshy, brittle and of fine texture, fibreless and stringless in all stages of growth. Desirable for the home garden as well as for market. Postpaid. Pkt. 15c; ½ lb. 40c; lb. 75c.

***ROUND POD KIDNEY WAX or Brittle Wax**—Extra early; very vigorous and productive. Long, straight, round pods that are entirely stringless. One of the finest for canning and home use.

***PENCIL POD BLACK WAX**—Hardy and prolific and of finest quality. The pods are bright waxy yellow, long and round and entirely free from strings. Desirable for home or market and very valuable for canning.

***SURE CROP WAX**—Very productive, stringless sort with pods six inches long, nearly round and of fine quality. The pods are long and straight, making a fine bean for market gardeners.

***STRINGLESS BLACK VALENTINE**—Very hardy; extremely early, withstanding cold, damp weather better than most sorts. Pods dark green, long, straight, stringless, nearly round. Excellent quality.

***IMPROVED BURPEE'S STRINGLESS GREEN POD**—Considered the best early bush bean. The pods are green, of good length, entirely stringless tender and brittle and remain so until ripe. This brown-seeded bean is both early and hardy and one of the richest flavored beans of all. A popular market or garden bean and desirable for canning.

***FULL MEASURE**—A splendid stringless bush bean with round, tender, green pods. Very high quality and producing heavy yields of pods about 6 inches long. It matures early.

***GIANT STRINGLESS**—Long, stringless, green pods. A few days later than Burpee's Stringless but more productive and with longer, straighter pods. The pods are large and nearly round.

***TENDERGREEN**—Similar to Full Measure but hardier and a more dependable cropper. Plants medium large, erect, heavily productive. Pods nearly straight, dark green, round, meaty, absolutely stringless and of outstanding quality.

***GILL'S RELIABLE**—A pioneer bean found under various names throughout the Northwest. We have grown it in our family for over forty years. It is remarkably prolific and hardy, having few superiors, either as a string or dry bean. The pods are green and the seed pure white. Unless picked very young, the pods need stringing. Fine for canning and a good all around bean. Postpaid. Pkt. 10c. ½ lb. 20c; lb. 35c.

***STRINGLESS REFUGEE**—Popular for canning.

Prices in this catalog marked "not prepaid" do not cover shipping expenses. When ordering several pounds it will be cheaper to use these prices, sending extra for postage.

Pole Beans

See bean prices on preceding page.

***GILL'S DELICIOUS GIANT**—In this cross between Oregon Giant and Kentucky Wonder we have originated a variety twice as productive as Oregon Giant, of better quality—and we believe the easiest bean of all to pick. The beans are produced in clusters of 4 to 6, the stems of which protrude outside the foliage. The pods are green, faintly striped with red lines which disappear when cooked. If you like green beans fresh for the table or for canning, do not fail to order this. Postpaid. Pkt. 10c; $\frac{1}{2}$ lb. 20c; lb. 35c.

***OREGON GIANT**—Giant pods a foot long; light green striped carmine. This wonderful bean is now sold by market gardeners at high prices. The quality is good even in the largest beans. Seed supply limited. Postpaid. Pkt. 10c; $\frac{1}{2}$ lb. 30c; lb. 50c.

***BLUE VICTOR**—Vines similar to Kentucky Wonder with large pods of purple blue. When cooked they lose the purple color and are a rich green. Fibreless and of excellent quality. Splendid for exhibition purposes. Postpaid. Pkt. 15c; $\frac{1}{2}$ lb. 40c.

***BLUE LAKE or White Creaseback**—Medium long, straight green pods. Heavy yielding, excellent quality. Popular for home and market garden, and for canning.

***KENTUCKY WONDER**—A standard variety often called Asparagus Bean. It produces exceptional yields of long, green pods of fine quality. We carry a true strain from careful selection.

***WHITE SEEDED KENTUCKY WONDER**—Many gardeners prefer this to Kentucky Wonder. Earlier, more productive, stringless and good quality.

***KENTUCKY WONDER WAX**—Vigorous and productive. Pods waxy yellow, large, stringless and of excellent quality.

SHELL BEANS

***OREGON LIMA**—A large pole lima, extra early and suited for Northwest culture. It is acclimated and matures ripe pods 75 days from planting. Excellent used as a butter bean or stored dry for winter use. Large, pure white seed of Oregon growth.

***LONDON HORTICULTURAL (Cranberry)**—Pods green streaked with red. Excellent used green, shelled or dry.

***DWARF HORTICULTURAL (Cranberry)**—A rich flavored early bush bean generally used as a green shell bean; vigorous and prolific. Bean and pod striped and blotched red.

BABY POTATO LIMA—Silver medal winner in the 1939 "All America" trials. A thick, but small seeded lima of sturdy growth and early maturity. Pods average over three beans to the pod. Seeds are bright green at fresh eating stage, turning creamy white at maturity. Valuable for home garden, canning and quick freezing. Postpaid. Pkt. 10c; $\frac{1}{2}$ lb. 25c; lb. 40c.

***HENDERSON'S BUSH (Baby Lima)**—Early and heavily productive. Thrives in ordinary soil. Splendid quality. Popular for canning. Postpaid. Pkt. 10c; $\frac{1}{2}$ lb. 20c; lb. 35c.

BURPEE'S BUSH LIMA—Large seeded; very productive. Postpaid. Pkt. 10c; $\frac{1}{2}$ lb. 25c; lb. 40c.

FORDHOOK LIMA—Potato Lima type. Plants large and very productive. Postpaid. Pkt. 10c; $\frac{1}{2}$ lb. 25c; lb. 40c.

***WHITE NAVY**—Heavily productive, small oval white bean. Best known commercial variety.

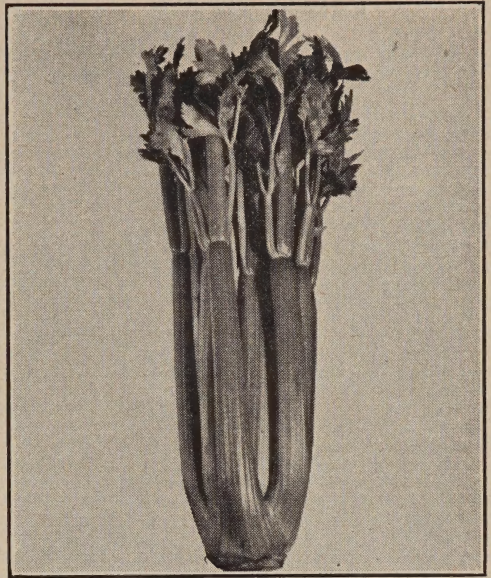
***GREAT NORTHERN**—White beans, larger than Navy. Hardy and heavy yielding.

***RED KIDNEY**—Easily grown. Excellent quality.

SWISS CHARD

FORDHOOK GIANT—Larger, darker green and more crinkled leaves than Lucullus. Stalks white. Outstanding for size and quality. Postpaid. Pkt. 5c; oz. 15c; $\frac{1}{2}$ lb. 40c; lb. \$1.00.

LUCULLUS—Grows about two and a half feet high. The heavy stalks are over an inch thick and bare for more than a foot of their length. Should be served as you would asparagus. The leaves make the finest "greens." Swiss Chard is hardy, easily grown, and should be in every garden. Postpaid. Pkt. 5c; oz. 15c; $\frac{1}{2}$ lb. 40c; lb. \$1.00.



Celery, Utah Jumbo

Celery

GOLDEN PHENOMENAL—A giant golden celery with larger and taller stems than Golden Plume. A strong, vigorous grower with more than usual resistance to disease. Recommended for early planting. Postpaid. Pkt. 10c; oz. 70c; $\frac{1}{2}$ lb. \$2.00.

GOLDEN SELF BLANCHING TALL STRAIN—The plants grow very tall and weigh very heavy. The stalks are wide and rather flat, while the quality is extra fine, being more free of strings than the old strain. It is valuable for local markets and also in dry climates where the old strain grows too short. This strain is very early. Postpaid. Pkt. 10c; oz. \$1.00; $\frac{1}{2}$ lb. \$3.50.

UTAH JUMBO—This remarkable late celery is the finest quality of any we have ever tried. Grown extensively near Salt Lake and wherever shipped commands high prices. Plants sturdy, compact and solid. Very free from strings. In Utah, soil bleaching is generally used, producing stalks that are pure white, nutty and crisp. Also immensely popular sold green without bleaching. Postpaid. Pkt. 10c; $\frac{1}{2}$ lb. 35c; oz. \$1.00; $\frac{1}{2}$ lb. \$3.50.

FLORIDA GOLDEN—A larger, taller, more vigorous type of Golden Plume. Postpaid. Pkt. 10c; oz. 70c; $\frac{1}{2}$ lb. \$2.00.

GOLDEN PLUME SPECIAL—A cross between Easy Blanching and Golden Self Blanching that is very hardy and unusually free from blight. We carry a fine strain that is popular with gardeners. Postpaid. Pkt. 10c; $\frac{1}{2}$ oz. 40c; oz. 70c; $\frac{1}{2}$ lb. \$2.00.

CELERIAC or TURNIP ROOTED CELERY, SPECIAL STRAIN—The roots are turnip shaped and are used for soups and stews. They are very hardy and will stand in the open all winter in the Coast regions. Postpaid. Pkt. 10c; oz. 75c; $\frac{1}{2}$ lb. \$2.00.

CELERY CABBAGE

WONG BOK PAOTING—A delicious vegetable from China, excellent for salads and cold slaw, and is sometimes used like Swiss Chard. The stems can be used like celery. For best results plant seed August 1st and thin to 18 inches apart. Use plenty of Garden Grow fertilizer to secure a quick, strong growth. Postpaid. Pkt. 10c; oz. 35c; $\frac{1}{2}$ lb. \$1.00; lb. \$3.50.

PEKIN—Grows long slender heads, solid and tender. This is a very fine variety. Postpaid. Pkt. 10c; oz. 35c; $\frac{1}{2}$ lb. \$1.00; lb. \$3.50.

Table Beets

CULTURE—Plant in rows 3 feet apart, with drill, April 1st to July 15th. Thin to 3 or 4 inches apart for table beets and 8 to 12 inches for mangels. For winter beets the latest sowing is best.

PRICES—Unless noted are uniformly: Postpaid. Pkt. 5c; oz. 15c; ¼ lb. 35c; lb. \$1.00.

EARLY BEAUTY—A perfectly round, fast growing and rich dark red beet. Roots are smooth and uniform in size with slender tap roots. Tops are medium, just right for bunching. Postpaid. Pkt. 10c; oz. 20c; ¼ lb. 45c; lb. \$1.25.

***EARLY WONDER**—A deep blood red beet, nearly globe shaped, with small clean tap roots and small erect tops. One of the earliest and most uniform bunching beets that can be grown and also very fine for late planting. They mature very even and will stand closer planting than most sorts.

EARLY MODEL—The best all around table beet for home or market. It is extremely early, of smooth, uniform shape. The flesh is dark red, entirely free from strings or core and unusually sweet. We offer a selected strain.

***EXTRA EARLY EGYPTIAN SPECIAL**—This strain has had our personal selection and produces extra early beets with small leaves and small tap roots. The roots are of rather flattened shape and the flesh is dark blood red and of finest quality.

***DETROIT DARK RED SPECIAL**—Splendid for market or home garden and popular with canneries. Roots nearly round, very uniform and of medium size; flesh tender and blood red. We carry an extra select strain. The best canning beet. The outstanding beet for high quality.

STRAWBERRY CROSBY—Extremely early with more globe shaped than the old Egyptian. Flesh very tender and sweet and rich vermilion red. The exterior color is strawberry red.

MANGEL BEETS

PRICES ON MANGELS UNIFORMLY: Postpaid. Pkt. 5c; oz. 15c; ¼ lb. 35c; lb. 90c; 3 lbs. @ 80c lb.

GOLDEN TANKARD—A smooth, yellow-fleshed mangel, of large size, growing largely above ground.

GIANT HALF SUGAR—Cross between a mangel and sugar beet. Flesh white and exceedingly rich.

DANISH SLUDSTRUP—Long, reddish-yellow; grows well above the ground and is easy to pull.

GIANT YELLOW ECKENDORF—Giant, smooth, long roots of cylindrical shape, weighing up to 20 pounds each and growing two-thirds above ground. Solid white flesh with high food value.

MONEY MAKER—Most resistant to frost of any. White exterior skin; white flesh. Long roots partly out of ground.

SUGAR BEETS

KLEIN WANZLEBEN—The best for making sugar. Write your agricultural college for instructions. It is also valuable for feeding purposes. Postpaid. Pkt. 5c; oz. 15c; ¼ lb. 30c; lb. 90c.

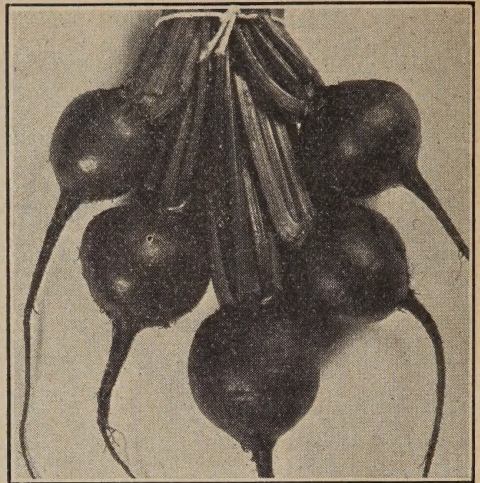
BRUSSELS SPROUTS

LONG ISLAND—Plants of medium height, producing a good yield of close, compact heads. Recommended for market gardeners. Postpaid. Pkt. 10c; oz. 50c; ¼ lb. \$1.35; lb. \$4.00.

HALF MOON BAY—An excellent variety originated at Half Moon Bay, California. Especially recommended for market gardeners. Medium green color. Postpaid. Pkt. 10c; oz. 85c; ¼ lb. \$2.50; lb. \$8.00.

***ULRICH'S AMERICAN SOLID**—Dark green heads of sweet, rich flavor. Will stand more frost than other varieties. The tight formation prevents the entering of bugs. Postpaid. Pkt. 10c; oz. 85c; ¼ lb. \$2.50; lb. \$8.00.

We can supply several of the leading brands of sprays and fungicides, also Rotenone Dusts, Vitamin B1, etc. Write for our price list of dusts, sprays, sprayers and other garden needs.



Beet, Detroit Dark Red Special

CHICORY

LARGE ROOTED—Chicory does well in this climate and is an excellent substitute for coffee. Plant like carrots. Postpaid. Pkt. 10c; oz. 65c; ¼ lb. \$2.00.

WITLOOF or FRENCH ENDIVE—The roots are transplanted and the shoots are bleached for winter. Use as a salad. Postpaid. Pkt. 10c; oz. 65c; ¼ lb. \$2.00.

CARDOON

LARGE SMOOTH—A perennial winter vegetable grown for the fleshy leaf stalks which are blanched like celery. Used for salads, or in soups. Postpaid. Pkt. 10c; oz. 40c; ¼ lb. \$1.00.

CORN SALAD

LARGE SEEDED—Sow in spring, in drills one foot apart; it will mature in 6 or 8 weeks. For winter and early spring use, sow in drills in August and September. Postpaid. Pkt. 10c; oz. 25c; ¼ lb. 75c.

CRESS

FINE CURLED (PEPPER GRASS)—Grows quickly from seed. Sow thinly in drills. Should be planted at intervals as it runs to seed quickly. Postpaid. Pkt. 10c; oz. 45c; ¼ lb. \$1.00.

WATER CRESS—Perennial aquatic plant with long stems and quite broad thick leaves; spicy flavor. Desirable for salads and attractive as a garnish. Postpaid. Pkt. 10c; ¼ oz. 25c; oz. 45c.

DANDELION

IMPROVED THICK LEAVED—Far superior to the uncultivated plant. Postpaid. Pkt. 10c; oz. 65c.

ENDIVE

Culture similar to lettuce. The outer leaves should be tied over the head to bleach.

LARGE GREEN CURLED—One of the best sorts. Postpaid. Pkt. 10c; oz. 25c; ¼ lb. 75c.

BATAVIAN BROAD LEAVED—Frequently called Escarolle. Postpaid. Pkt. 10c; oz. 25c; ¼ lb. 75c.

EGG PLANT

Start in hot beds like tomatoes. Set 2½ feet in the rows and 3 feet between.

BLACK BEAUTY—The earliest and best of the large fruited varieties. Color rich, lustrous purplish black. Postpaid. Pkt. 10c; ½ oz. 40c; oz. 75c; ¼ lb. \$2.25.

OREGON STATE CERTIFIED WISCONSIN HYBRID NO. 525, FIELD CORN

Postpaid. Pkt. 10c; lb. 35c. Not prepaid, lb. 25c; 10 lbs. @ 15c; 100 lbs. @ 12c lb.

CABBAGE

CULTURE—Early varieties should be sown in the open ground in early September or in cold frame in January or February. We do not recommend sowing in hotbed as plants will be too tender. For earliest cabbage, transplant fall sown plants in late October or early November. For late, sow seed in open ground May 1st, transplant June 15 for fall, and July 1st to 20th for winter cabbage, in rows 3½ feet apart, from 25 to 36 inches in the row, according to the richness of the soil, size and variety. Do not crowd them. They do best in rich, loamy soil, fertilized with barnyard manure of any kind and apply Garden Grow fertilizer as directed. Early Jersey Wakefield, Large Wakefield, All Head Early, Danish Roundhead and Oregon Ballhead can be sown in the fall for spring and summer cutting. They seldom run to seed. Golden Acre, Copenhagen Market and Glory of Enkhuizen will not winter over.

PRICES—Unless noted are uniformly: Postpaid. Pkt. 10c; oz. 45c; ¼ lb. \$1.25; lb. \$4.00.

GOLDEN ACRE—An extra early round-headed fine quality cabbage, maturing with Early Jersey Wakefield. The heads are firm with few outer leaves and average about four pounds. Postpaid. Pkt. 10c; oz. 50c; ¼ lb. \$1.50; lb. \$5.00.

LOUISIANA COPENHAGEN—Matures about one week earlier than Copenhagen market. Medium sized heads; very compact and of excellent quality.

COPENHAGEN MARKET—Good sized, round heads, maturing with Large Wakefield, usually weighing 5 to 8 pounds.

***EARLY JERSEY WAKEFIELD SPECIAL**—This is still the most valuable for the main crop of early cabbage. We have secured a special strain with solid heads and few outside leaves. It also matured the earliest of some twenty strains we tested.

BIG STRAIN WAKEFIELD—Larger than Early Jersey Wakefield and one week later. Valuable crop to precede Charleston Wakefield.

***LARGE WAKEFIELD or CHARLESTON**—Similar to Jersey Wakefield, but half again as large and ten days later. Postpaid. Pkt. 10c; oz. 35c; ¼ lb. \$1.00; lb. \$3.25.

GLORY OF ENKHUIZEN—The best variety for summer or fall crops, for its tendency is to produce large heads even in dry weather. It can also be used for early spring crop. It is not satisfactory as a winter cabbage. Very brittle and sweet. Postpaid. Pkt. 10c; oz. 35c; ¼ lb. \$1.00; lb. \$3.25.

ALL HEAD EARLY—A second early flat headed sort, very sure heading and little subject to bursting. Extra fine for kraut. Very desirable for fall. Postpaid. Pkt. 10c; oz. 35c; ¼ lb. \$1.00; lb. \$3.25.

DANISH ROUNDHEAD—About two weeks earlier than Oregon Ballhead. The heads are larger and in demand for kraut purposes. It does not withstand aphid or freezing like Oregon Ballhead. Seed from carefully selected heads. Postpaid. Pkt. 10c; oz. 35c; ¼ lb. \$1.00; lb. \$3.25.

AMERICAN SAVOY—The best main crop Savoy cabbage; quite firm, large heads with curly foliage. Postpaid. Pkt. 10c; oz. 35c; ¼ lb. \$1.00; lb. \$3.25.

***PORTLAND ROUNDHEAD**—Developed by a local gardener. Heads larger than Oregon Ballhead. Especially fine for summer cutting and early kraut purposes. Postpaid. Pkt. 10c; oz. 50c; ¼ lb. \$1.50; lb. \$5.00.

Broccoli

***ST. VALENTINE OREGON SPECIAL**—The best sort for spring shipment, the solid, handsome, white heads being of immense size and ready in February and March. It is extensively grown around Roseburg, Oregon, for Eastern shipment.

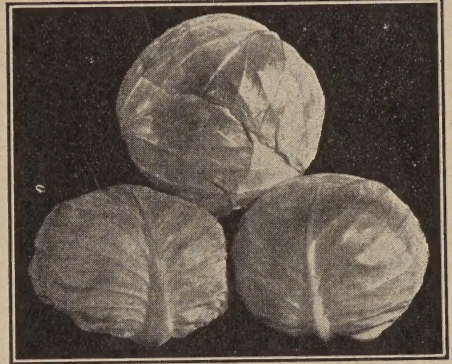
This special stock was grown by ourselves and is well typed. Much Oregon grown broccoli seed is inferior, but you will find this strain well developed for commercial crops. Postpaid. Pkt. 10c; ½ oz. 45c; oz. \$1.25; ¼ lb. \$3.75; lb. \$12.00.

NOTICE TO OUR CUSTOMERS

Due to the war situation in Europe, prohibiting importations, some varieties of Cabbage, Broccoli, most all varieties of Cauliflower, Mangel Beets, and Spinach, are in very limited supply and prices are necessarily higher.

Short crops in our own country, of many varieties of Onion, Carrot, Spinach and some other less important vegetables, have necessitated some sharp advances in price. However, we have carefully checked our stocks and have made only such proportionate advances as were necessary.

GILL BROS. SEED CO.



Cabbage, Gill's Oregon Ballhead

***GILL'S OREGON BALLHEAD**—The acknowledged leader in the Northwest for a main crop winter cabbage. We have developed this strain until it excels all others for solidity, resistance to aphid or freeze injury. It is the best cabbage for crating or general market purposes. The outer leaves are deep green and will hold their color weeks after cutting. It is the best keeper of all. Postpaid. Pkt. 10c; oz. 50c; ¼ lb. \$1.50; lb. \$5.00.

HOLLANDER—Excellent late ballhead type, very hardy. Nearest to Gill's Oregon Ballhead of any variety we have tested.

PENN STATE BALLHEAD—Largest of the ballhead types. Short stem late variety desirable for winter storage. Postpaid. Pkt. 10c; oz. 35c; ¼ lb. \$1.00; lb. \$3.25.

PHANTOM BALLHEAD—A real improvement on the old standard variety of Danish Ballhead short stem. Uniform heads of excellent quality.

DANISH BALLHEAD (Short Stem)—Imported seed of the short stem type. It matures earlier than Oregon Ballhead. Medium sized, solid heads.

DANISH BALLHEAD (Tall Stem)—Imported seed of the tall stem type. Suitable for low, wet land.

STONEHEM RED—Deep red, exceptionally solid heads of good size.

Green Broccoli

IMPROVED EARLY CALABRESE—A valuable Italian vegetable forming heads of deep green, just about the same color as the foliage. After the main head is cut, smaller heads branch out below. It is very tender, nutritious and delicious, and can be raised as easily as cabbage. Plant the seed June 1st to 20th and transplant July 15th to August 10th, in the same manner as other cauliflower or broccoli. It is very hardy and is not injured by light, so needs no protection. Light frosts will not injure it. Postpaid. Pkt. 10c; ½ oz. 50c; oz. 90c; ¼ lb. \$2.50; lb. \$7.50.

HERB SEEDS—FOR PLANTING

(All Herb Seed Prices Postpaid.)

ANISE—Used as a cordial and for garnishing and flavoring. Seeds have an agreeable aromatic taste. Pkt. 10c.

BASIL (Sweet)—For flavoring soups, stews and highly seasoned dishes. Pkt. 10c.

***BOHEMIAN POPPY**—The poppy seed used on bread and pastry. Pkt. 10c.

CARAWAY—Used for flavoring of bread, pastry, etc. Pkt. 10c.

CATNIP or CATMINT—The leaves are used for seasoning. It also makes an excellent bee pasture. Pkt. 10c.

CHIVES—Leaves used in salads and for flavoring soups and stews. Pkt. 10c.

CORIANDER—The seeds are used in the manufacture of liquors and confectionery. Pkt. 10c.

DILL—Mammoth variety. Pkt. 5c; oz. 15c; 1 lb. 35c; 1 lb. \$1.00.

FLORENCE FENNEL—An Italian vegetable with thick leaf stem. It is served boiled or sliced, also cooked in soups. Pkt. 10c; oz. 25c; 1 lb. 90c.

HOREHOUND—Used for seasoning. Pkt. 10c.

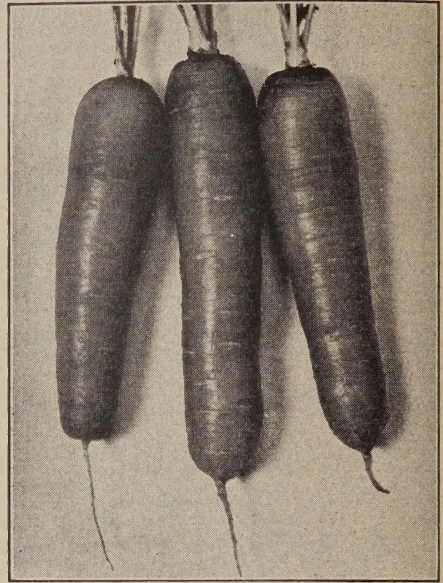
MARJORAM (Sweet)—The leaves and the ends of the shoots are esteemed for seasoning in summer and are also dried for winter use. Pkt. 10c.

ROSEMARY—The aromatic leaves are used for seasoning. Pkt. 10c.

SAGE—Hardy perennial, extensively used for seasoning. Pkt. 10c.

SUMMER SAVORY—A hardy annual. The dried stems, leaves and flowers are extensively used for flavoring, in dressings and soups. Pkt. 10c.

THYME—Used for seasoning. Pkt. 10c.



Carrot, Gill's Special Nantes

NEW IMPROVED SEMESAN, Jr.
For treating seed corn. See page 16.

CAULIFLOWER

CULTURE—For early cauliflower, start in cold frame. For fall cutting, Improved Early Calabrese Green Broccoli and all varieties of cauliflower except those listed below, should be planted June 1st to 20th and transplanted July 15th to August 10th. For late cauliflower, All Seasons, November-December, Purple Italian, should be planted the first week in May, transplanting July 1st to 15th. For St. Valentine Broccoli, plant the first week in May, transplanting July 20th to August 10th. Cauliflower and Broccoli do best in a rich, loamy soil, not a cold wet location. Plant 2½ to 3½ feet in rows, and 3½ feet between rows. Before the heads are large enough to be exposed to the light, tie or break the leaves carefully over the head to keep the light away from them. Great care should be used in growing plants of any of the early sorts, that they receive no severe check in their growth, as this will cause them to produce premature heads.

PRICES—Unless noted are uniformly: Postpaid. Pkt. 15c; 1 oz. \$1.35; oz. \$4.00; 1 lb. \$15.00; lb. \$50.00.

HENDERSON SNOWBALL—A popular Snowball type extensively grown for shipping in the Portland territory. Reselected to produce exceptionally white, solid heads well protected with foliage. We recommend this strain for shipping.

SUPER SNOWBALL—An outstanding early variety producing heads of uniform size, shape and type. The heads are almost round with pure white, smooth curd. Tall foliage protects the heads.

GILL BROS. SPECIAL SNOWBALL—An excellent late shipping variety grown extensively in the Portland territory. Grown from Reimann stock. Postpaid. Pkt. 15c; 1 oz. \$1.10; oz. \$3.25; 1 lb. \$12.00; lb. \$40.00.

CATSKILL SNOWBALL—A selected strain of Snowball Cauliflower that is popular with shippers. The flower is solid, white and uniform, and of even surface.

WIBOLT'S EXPRESS—An excellent Snowball type with a rather short stalk that may be used for both early and main crop plantings. The dark green foliage gives protection to the head and the short stalk added protection against wind. Postpaid. Pkt. 15c; 1 oz. \$1.10; oz. \$3.25; 1 lb. \$12.00; lb. \$40.00.

DANISH GIANT DRY WEATHER—We recommend Gilt Edge.

GILT EDGE or MT. HOOD SNOWBALL—Very large, heavy heads of finest quality. The flower is quite smooth and regular and pure white when bleached.

GIANT EASY BLANCHING—The large, solid, pure white heads are produced near the ground on short stems but the leaves are extra long, while the inner leaves fold closely about the head, making them almost self protecting. This self protecting habit insures a greater number of first grade heads and the long leaves protect the heads in hauling or crating. The plants have strong vitality and are unusually free from disease. Valuable for early spring cutting.

ALL SEASONS—The only Snowball type that is free from foolheads. It is more free from root maggot injury than other Snowball sorts and is the best for growing in the summer as it withstands heat exceptionally well. Ideal for plant growers on account of its unusual vitality. Postpaid. Pkt. 10c; 1 oz. 60c; oz. \$1.75; 1 lb. \$5.00.

NOVEMBER-DECEMBER—Requires a long growing season. Especially suited to Pacific Coast states. Postpaid. Pkt. 10c; oz. \$1.75; 1 lb. \$5.00; lb. \$16.00.

PURPLE ITALIAN—Heads like cauliflower, stems green, flower purple on top, but this color disappears when cooked. Postpaid. Pkt. 10c; 1 oz. 45c; oz. \$1.25; 1 lb. \$3.75.

CARROTS

CULTURE—Carrots may be planted from March to June. We prefer to plant from May 10 to 25; they will then miss many of the spring weeds and will stand through the dry season better, making a better quality of roots. Plant in rows 3 feet apart covering one-half to one inch, according to weather conditions. Those who plant any quantity should use a good drill, as it lessens the work and gives a more even stand. As soon as they are up, use a wheel hoe, following this with a harrow tooth cultivator.

PRICES—Unless noted are uniformly: Postpaid. Pkt. 10c; oz. 30c; $\frac{1}{2}$ lb. 90c; lb. \$2.50.

GILL'S OREGON CHANTENAY—A special strain of our selection producing very smooth roots about one inch longer than the regular strain and of more even diameter the whole length of the carrot. It is very popular with gardeners. The tops are of medium size, tough and wiry, hence the carrots seldom break from the bunches. The roots are deep red color with small core. Very high quality.

GILL'S SPECIAL NANTES—The roots are bright orange, 6 to 8 inches long and very uniform. They have a very small core and are exceptionally tender and sweet. The roots are rather slender, of even diameter and of early maturity. Very desirable for market, especially for bunching, and also splendid for the home garden. We offer a fine, re-selected strain grown from our stock seed.

STREAMLINER—Long slender type. Excellent quality.

IMPERATOR—A good market carrot. Roots long, smooth and of rich red color with small core.

CHANTENAY—A good, all around carrot. The roots are very smooth, stump rooted and of good quality.

TABLE GEM—We believe this to be the finest of all table carrots. The roots are 5 to 6 inches long, of even diameter and blunt ends. It is nearly coreless, exceptionally tender and sweet and is delicious eaten raw. It is very early and the tops are small. Suited for forcing or outside culture.

EARLY SCARLET HORN—Very early with small tops. Bright orange red; three inches long and top shaped. A valuable first early sort.

DANVER'S HALF LONG, RED CORED—Deep orange red right through to the center. Heavy yielding; excellent quality.

STOCK CARROTS

PRICES—Unless noted are uniformly: Postpaid. Pkt. 5c; oz. 25c; $\frac{1}{2}$ lb. 60c; lb. \$1.75.

LARGE WHITE BELGIAN—Long-rooted white stock carrot; very heavy yielding.

LARGE YELLOW BELGIAN—Same as above except color pale yellow.

WHITE MASTODON—Very heavy, half long, tapering, smooth roots.

SWEET CORN

The first requisite for success with corn is acclimated seed—Note those with star.

CULTURE—Prices paid for first early corn will pay the grower to take chances on early planting. For this planting use 4 to 5 seeds per hill and cover one inch deep. Space hills 28 to 36 inches, and rows 3 $\frac{1}{2}$ feet, allowing two stalks to the hill or as some prefer, and we think this gives the best results, plant 15 inches between hills, and thin to one stalk; this gives all the stalks an even show. April 1 to May 1 is a good season for early corn, of course, depending on the weather. May 15th to 25th is good for the later sorts, as they do not resist damp, cold weather so well as the early sorts.

Corn will not fill well unless the patch planted is blocked out; those planting small quantities should make the patch square, or nearly so. This will permit the pollen to blow down on the silk, fertilizing the ears. Early corn may be planted in succession up to June 25. Use Garden Grow fertilizer.

***GILL'S EARLY GOLDEN SWEET**—Earliest of the golden varieties. Ears average about the same size as Improved Bantam with stalks three and one-half feet tall. We recommend this for market and home gardens. The sweetest first early variety we have tested. Postpaid. Pkt. 10c; $\frac{1}{2}$ lb. 20c; lb. 35c. Not prepaid, lb. 25c; 10 lbs. @ 20c; 25 lbs. @ 18c; 100 lbs. @ 17c.

***GILL'S GOLDEN EARLY MARKET**—The earliest large, true sweet corn of golden color. It is a cross between our Improved Golden Bantam and Early White Market. According to our own trials and reports from all over the country, it is earlier and larger than Golden Sunshine. It is the outstanding early corn and is a money-maker for gardeners. For home use or market, be sure to plant this variety. It matures about a week earlier than Improved Golden Bantam. Large, golden ears, tightly filled with large sweet grains of high quality. Postpaid. Pkt. 10c; $\frac{1}{2}$ lb. 20c; lb. 35c; not prepaid, lb. 25c; 10 lbs. @ 17c; 25 lbs. @ 16c; 100 lbs. @ 15c.

***GILL'S IMPROVED GOLDEN BANTAM**—Superior to the original Golden Bantam in quality and nearly twice the size, also one week earlier. Nearly all ears carry 12 rows of deep, rich golden yellow kernels set close upon the cob. Do not compare this with the original strain, as it is far superior in every respect, and any gardener who places this corn on the market will command better sales and prices.

It has no superior for market, table, canning or drying. Remember, we are the originators of this improved strain and continue our careful stock seed selections each year. If you wish the up-to-date selection buy direct from us. We have received many letters of praise for this corn and many of our customers will have nothing else. Postpaid. Pkt. 10c; $\frac{1}{2}$ lb. 20c; lb. 35c. Not prepaid, lb. 25c; 10 lbs. @ 18c; 25 lbs. @ 17c; 100 lbs. @ 16c.



Corn, Gill's Early Golden Sweet

***HYBRID GOLDEN MARKET**—A top cross hybrid of our Early Golden Sweet with C 13. About as early as Golden Early Market, more productive and very uniform. Postpaid. Pkt. 10c; $\frac{1}{2}$ lb. 25c; lb. 40c. Not prepaid, 10 lbs. @ 25c.

***MARCROSS**—An early yellow hybrid with 12 row ears, longer than Golden Early Market and about one week later. Good quality. Postpaid. Pkt. 10c; $\frac{1}{2}$ lb. 25c; lb. 40c. Not prepaid, 10 lb. @ 25c.

(Sweet Corn—Continued)

***TOP CROSS IMPROVED GOLDEN BANTAM**—A top cross hybrid of our Improved Golden Bantam with Purdue 89. Three or four days later than Improved Golden Bantam, but more vigorous and produces a heavier tonnage per acre. Postpaid. Pkt. 10c; $\frac{1}{2}$ lb. 25c; lb. 40c. Not prepaid, 10 lbs. @ 25c.

***GOLDEN CROSS BANTAM**—A hybrid sweet corn especially valuable where Stewart's disease (wilt) makes it impossible to grow ordinary varieties. Excellent for market gardeners and canners. 12 row ears, more resistant to worm damage and heaviest yielding of any yellow sweet corn variety. Matures very uniformly. Postpaid. Pkt. 10c; $\frac{1}{2}$ lb. 25c; lb. 40c. Not prepaid, 10 lbs. @ 25c.

***GOLDEN GIANT**—Large, golden yellow ears of high quality. Matures about ten days after Improved Golden Bantam. Popular yellow corn for late markets. Postpaid. Pkt. 10c; $\frac{1}{2}$ lb. 20c; lb. 35c. Not prepaid, lb. 25c; 10 lbs. @ 17c.

***GILL'S EARLY WHITE MARKET**—The large ears are well filled with sweet, plump, white grains set 12 to 14 rows to the cob. On account of its extreme earliness and large size, market gardeners get very profitable prices. Postpaid. Pkt. 10c; $\frac{1}{2}$ lb. 20c; lb. 35c. Not prepaid, lb. 25c; 10 lbs. @ 18c; 25 lbs. @ 16c.

***OREGON EVERGREEN**—While this is not a first early corn, this strain is considerably earlier than Stowell's Evergreen, which in general character it resembles. Postpaid. Pkt. 10c; $\frac{1}{2}$ lb. 20c; lb. 35c. Not prepaid, lb. 25c; 10 lbs. @ 15c.

***STOWELL'S EVERGREEN**—Standard white variety later than Oregon Evergreen. Used for market and ensilage. Prices same as Oregon Evergreen.

YELLOW SWEET CORN COLLECTION

We offer one packet of Golden Early Market, Improved Golden Bantam and Golden Giant for 20c; $\frac{1}{2}$ lb. each for 50c; 1 lb. each for 75c, postpaid. This makes a splendid succession if planted at the same time.

FIELD CORN

The growing of field corn has now reached a stage where it is past being an experiment, and with acclimated seed there is no difficulty to obtain success. We do not and will not handle any but Northwest grown seed of Dent Corn and our customers may feel sure of getting acclimated seed.

***ALBANY DENT** (formerly called Albany Hybrid)—A cross between Minn. No. 13 and Pride of The North. It has the earliness of the No. 13, and the deep grain and small cob of the Pride of The North. It has been given careful selection and is, we believe, one of the finest sorts for grain or ensilage. It is very early and produces large, heavy ears on tall stalks. Postpaid. Pkt. 10c; lb. 25c. Not prepaid, lb. 20c; 10 lbs. @ 10c; 100 lbs. @ \$6.50.

***IDAHO HYBRID (Grain Type)**—Same season as Minn. 13 and the first Hybrid Dent corn we have ever seen that is suitable for growing conditions West of the Cascades. The extensive root system keeps the plants erect throughout the season, producing longer than average ears and a heavy yield of grain. Postpaid. Pkt. 10c; lb. 35c. Not prepaid, lb. 25c; 10 lbs. @ 15c; 100 lbs. @ \$10.00.

***IDAHO HYBRID (Silage Type)**—Same as grain type, except bred for a longer growing season in order to produce a heavier crop of silage material. Prices same as grain type.

***WISCONSIN HYBRID NO. 525**—A splendid yellow dent hybrid ripening in a little over 100 days. Uniform, large ears, splendid appearing and heavy yielding for grain or ensilage. Prices same as Idaho Hybrids.

***MINN. NO. 13**—An early variety well suited to the Northwest. Grains golden yellow, deep and heavily dented. Prices same as Albany Dent.

POP CORN

***AUSTRALIAN HULLESS (Improved White Rice)** Small, sharp pointed, white grains. Extra fine quality. Postpaid. Pkt. 10c; $\frac{1}{2}$ lb. 20c; lb. 30c.

***SPANISH PEARL**—Large, round, smooth, white grains. Best commercial sort. Postpaid. Pkt. 10c; $\frac{1}{2}$ lb. 20c; lb. 30c. Not prepaid, 10 lbs. @ 20c.

CUCUMBERS

Plant 4 feet each way in rich, loamy soil, from May 1 to July 1, 8 to 10 seeds to hill; thin to two good vines. Cover seeds one inch deep and press.

PRICES—Unless noted are uniformly: Postpaid. Pkt. 5c; oz. 20c; 1 lb. 45c; lb. \$1.35.

***MISSION**—About a week earlier than Vaughan, 10 to 12 inches long, straight and dark green. Larger in diameter but very even and of exceptionally fine quality. Postpaid. Pkt. 15c; oz. 45c; $\frac{1}{2}$ lb. \$1.35; lb. \$4.00.

THE VAUGHAN or LONGFELLOW—The best slicing cucumber to date for market purposes. The cucumbers are long, straight and of even diameter. When ready for slicing they will average a foot long and about one and one-half inches in diameter. They are a very deep green and the quality is extra fine. Postpaid. Pkt. 10c; oz. 30c; $\frac{1}{2}$ lb. 85c; lb. \$2.50.

WHITE WONDER—A novelty of considerable merit. White at all stages of growth. The small white pickles taper at the blossom end and are very attractive when packed in glass containers. Exceptionally vigorous. Pkt. 10c; oz. 25c.

A & C—Intense black green color. Fine for slicing and market. Postpaid. Pkt. 10c; oz. 30c; $\frac{1}{2}$ lb. 85c; lb. \$2.50.

BOSTON PICKLING—The most popular pickling sort, medium sized and vigorous. Postpaid. Pkt. 5c; oz. 15c; $\frac{1}{2}$ lb. 35c; lb. \$1.00.

DAVIS PERFECT—A strong, vigorous grower, producing heavy crops of uniform, long, dark green cucumbers.

IMPROVED EARLIEST OF ALL—Vigorous grower. Dark green, desirable for slicing and pickling.

ARLINGTON WHITE SPINE—We consider this the best strain of White Spine.

SPECIAL LONG GREEN—Extra long and large; handsome dark green; fine for slicing or pickling.

IMPROVED TELEGRAPH—The finest hothouse or forcing cucumber; dark green fruits that attain a length of about twenty inches. Very prolific, crisp and of superior quality. Postpaid. Pkt. 35c.

SMALL GHERKIN—A small, round, prickly variety used only for pickles.

LEMON CUCUMBER—Resembles a lemon, both in color and form. Splendid for pickling or slicing. Postpaid. Pkt. 5c; oz. 25c; $\frac{1}{2}$ lb. 75c.

KALE, EDIBLE

Culture, same as that of cabbage.

TALL GREEN SCOTCH CURLED—Tall and finely curled leaves. Postpaid. Pkt. 5c; oz. 20c; 1 lb. 45c; lb. \$1.50.

DWARF GERMAN—Finely curled, low growing. Postpaid. Pkt. 5c; oz. 20c; $\frac{1}{2}$ lb. 45c; lb. \$1.50.

GEORGIA COLLARDS—Valuable greens for table use and stock feeding. They grow $\frac{1}{2}$ or 3 feet tall and form loose, open cabbage-like heads. They withstand our winters and can be used all winter long. Postpaid. Pkt. 5c; oz. 20c; 1 lb. 45c; lb. \$1.50.

KALE FOR FEEDING

***JERSEY KALE**—Large, heavy, massive plants, with giant, broad leaves. This variety produces by far the largest crop. We offer seed of our own growing. Postpaid. Pkt. 5c; oz. 15c; $\frac{1}{2}$ lb. 30c; lb. 85c.

GIANT MARROW—Enormous plants on tall, heavy stalks. The leaves are very broad and heavy and combined with large stalks, often 2 inches in diameter, make a heavy yield of feed. Postpaid. Pkt. 10c; oz. 20c; 1 lb. 50c; lb. \$1.50.

***WINTER PROOF THOUSAND HEADED**—Much more resistant to frost than the regular strain. Pkt. 5c; oz. 15c; 1 lb. 35c; lb. \$1.00.

KOHL RABI

EARLY WHITE VIENNA—The best for table use. Kohl Rabi should be grown more, as it is a delicious vegetable, cooked like turnips. Transplant like cabbage in July; rows 3 feet wide and 1 foot in rows. Postpaid. Pkt. 10c; oz. 35c; 1 lb. \$1.00.

LETTUCE

Can be planted almost any time of the year. Give head varieties plenty of room, at least 15 inches apart each way. Cover one-half inch deep. Referring to head lettuce, it is generally agreed among large growers that aging of the seed produces earlier and firmer heads, besides making them more sure heading.

NEW YORK (See strains listed below)—This variety is the most popular lettuce in America. It makes large, solid heads and bleaches very white and brittle. During the summer months this lettuce is shipped East from Oregon and Washington, and, in the winter, it is shipped to our Northern markets from California. We have a very large trade with market gardeners and sell New York seed to plant thousands of acres each year. Do not gamble with your crop by buying cheap lettuce seed. Intensive selection has resulted in several strains of New York, six of which we list below.

IMPERIAL "44"—Medium sized, hard heads with few outer leaves. Fine for August and early September cutting in the Pacific Northwest. Recommended for general use in Eastern locations. Postpaid. Pkt. 10c; oz. 35c; 1 lb. \$1.00; lb. \$3.00.

IMPROVED NEW YORK "B"—About the same color as New York "B," but has a smoother, heavier leaf structure and is a sturdier type. Recommended for the same season. Postpaid. Pkt. 10c; oz. 30c; 1 lb. 85c; lb. \$2.50.

NEW YORK "B"—Resembles No. 12, but has better leaf coverage, is larger and more burn resistant. Desirable for early spring, summer and fall cutting.

NEW YORK No. 12—Large, compact, medium green heads, adapted to early spring and summer cutting. Very popular with growers.

IMPERIAL "615"—One of the largest heading varieties. Resistant to brown blight; does not make suckers. Desirable for early spring cutting in the South and for fall cutting in the Northwest.

IMPERIAL "847"—Large, dark green heads, desirable for spring, summer and fall cutting. Tip burn resistant. Black seed.

PRICES ON NEW YORK TYPES—Four above types. Postpaid. Pkt. 5c; oz. 25c; 1 lb. 65c; lb. \$2.00.

OAK LEAF—Forms a bunch or indefinite head of medium size and light green. Excellent quality. Postpaid. Pkt. 10c; oz. 25c.

CREAMY HEART—An excellent butterhead type. Hardy for early planting. Medium size.

ICEBERG—Produces large, firm heads, very tender and brittle. Withstands hot weather better than most sorts.

COS, PARIS DARK GREEN—Folds well and forms a good firm head, which is light green and white at the heart.

HANSON—Large firm heads; medium green.

TOMHANNOCK—A beautiful, quick growing loose leaf lettuce. Leaves large, bordered reddish brown; very tender and sweet.

GRAND RAPIDS—The standard hothouse lettuce for forcing; also does fine in the open ground. Loose leaves with light fringed edges.

CHICKEN LETTUCE—A rough, tall, loose plant for feed only. Grows 4 feet high and supplies abundant green feed. Fine tonic for laying hens.

PRICES ON ABOVE SEVEN LETTUCE varieties: Postpaid. Pkt. 5c; oz. 15c; 1 lb. 35c; lb. \$1.25.

HORSE RADISH

Plant in the spring 18 to 24 inches apart. Set the roots small end down. Postpaid. Doz. 50c; 100 for \$2.00. Write for prices on quantities.

LEEK

ELEPHANT—Culture same as onions. Large size. The best. Postpaid. Pkt. 10c; oz. 50c; 1 lb. \$1.35; lb. \$4.00.

PARSLEY

TRIPLE MOSS CURLED—Dark green moss-like leaves. Postpaid. Pkt. 5c; oz. 20c; 1 lb. 35c; lb. \$1.00.

HAMBURG or TURNIP ROOTED—For flavoring soups and stews. Postpaid. Pkt. 5c; oz. 20c.



Lettuce, New York "B"

Muskmelon

CULTURE—Loam soil is best fertilized with rotted manure and Garden Grow fertilizer. Plant 4 by 6 feet, giving more room for larger varieties. Use 8 to 10 seeds to the hill; cover 1 to 1½ inches deep. When the first leaves appear, thin to two plants. Turn the vines with the row to permit cultivation.

PRICES—Unless noted are uniformly: Postpaid. Pkt. 5c; oz. 15c; 1 lb. 40c; lb. \$1.25.

***THE MARVEL**—We introduced this exceptionally fine keeping and shipping melon that is superior in both quality and shipping characteristics. Large, round-oblong shape, heavily netted; without ribs. Gray-green color, turning a creamy yellow under the netting when ready to use. Thick orange flesh of fine quality. Equally good for local markets, roadside stands, or shipping long distances. Vine ripened melons will keep more than a week, permitting quantity purchases, also the outstanding feature of vine ripened melons on the tables of consumers at a distance never before possible. Do not fail to try this remarkable melon. Postpaid. Pkt. 10c; oz. 20c; 1 lb. 50c; lb. \$1.50.

***OREGON DELICIOUS**—We introduced this exceptional melon for quality, size and earliness. They usually weigh 6 to 8 pounds. The shape is round oblong, slightly ribbed and with a creamy green color when ripe. The flesh is salmon, very thick and of wonderful quality. The melons are quite heavily netted and of attractive appearance. It is a selection from the Spear melon. Postpaid. Pkt. 10c; oz. 20c; 1 lb. 50c; lb. \$1.50.

THE BENDER—A large, highly flavored, round melon; very early. Delicious, deep orange flesh.

HALE'S BEST EARLY—On account of its earliness, size and fine shipping and keeping qualities this melon has become very popular. It is larger than the Rocky Ford types; is thoroughly netted and with attractive, thick, orange flesh.

JUMBO HALE'S BEST or TRIUMPH—Early very heavily netted, no ribs, and 25 to 30% larger than the regular Hale's Best. Thick, bright orange flesh and extremely small seed cavity.

HEARTS OF GOLD—An orange fleshed melon of uniform medium size and ideal for shipping. The rind is firm and densely netted. The flesh is thick, high colored and delicious.

EXTRA EARLY KNIGHT—An extremely early melon of high quality and a good shipper. Flesh thick and very sweet; green blending to light pink.

BURELL GEM SPECIAL—A splendid shipper; seed cavity small, flesh firm and reddish orange. Very high quality.

(Muskmelon—Continued)

PERFECTED PERFECTO—Superior shipping melon. Fruits almost round; heavily netted; very uniform. Highest quality.

HONEY ROCK or Sugar Rock—Early, prolific and a good shipper for reasonable distances. Medium size, nearly round. Flesh thick, salmon colored and fine flavored.

HONEY DEW—(Green Flesh)—A round-oblong shaped melon with almost white rind. Flesh thick light green and sweet as honey.

GOLDEN RIND HONEY DEW—(Green Flesh)—Also called Golden Honeymoon. About ten days earlier than regular Honey Dew. Same shape, thick flesh, good flavor and carries well in shipping.

PERSIAN—Large, round, heavily netted melon without ridges. Thick yellow flesh of delightful flavor. Usually average about 10 lbs. in weight. Not recommended for territory west of Cascades. Postpaid. Pkt. 10c; oz. 25c; $\frac{1}{4}$ lb. 75c; lb. \$2.00.

EARLY YELLOW PERSIAN—Slightly long in shape and when ripe a golden color shows through the light gray netting. Flesh thick, rich salmon with a wonderful aroma and flavor. A week earlier than the Persian. Postpaid. Pkt. 15c; oz. 35c; $\frac{1}{4}$ lb. \$1.00; lb. \$3.00.

VEGETABLE ORANGE—Grows similar to muskmelons; small-sized, round shaped, orange-colored fruit; fine for pickles and preserves. Postpaid. Pkt. 10c; oz. 40c.

CASABA

GOLDEN BEAUTY—Bright yellow, about globular in shape and the first to ripen. They will mature in most localities where melons can be grown. Postpaid. Pkt. 5c; oz. 20c; $\frac{1}{4}$ lb. 45c; lb. \$1.35.

Watermelon

Plant 8 to 10 seeds in hills 6x6. Thin to 2 best vines. Turn vines with the rows. Plant May 10th.

***EARLY ARIZONA**—Medium sized round melons with dark green rind and deep red flesh. Dark brown seed. About 30 days earlier than Klondike. Quality equals that of Klondike. Seed of our own growing. Postpaid. Pkt. 10c; oz. 20c; $\frac{1}{4}$ lb. 50c; lb. \$1.50.

EARLY NORTHERN SWEET—Ripens in 9 to 10 weeks from planting. Green with lighter stripes. Flesh dark red. Weighs 9 to 10 lbs. Splendid for early market. Postpaid. Pkt. 10c; oz. 20c; $\frac{1}{4}$ lb. 50c; lb. \$1.50.

KLONDIKE—A melon of the best quality, being exceptionally sweet and fine. The flesh is very brittle and the fruit oblong. We carry a selected strain. Postpaid. Pkt. 5c; oz. 20c; $\frac{1}{4}$ lb. 50c; lb. \$1.50.

STRIPED KLONDIKE—Wherever this melon has been offered on the markets it has replaced other varieties and brought a higher price. It often carries three or four mature melons at one time that easily attain a size of twenty-five to thirty pounds. The seed offered is from the originator. Postpaid. Pkt. 10c; oz. 20c; $\frac{1}{4}$ lb. 60c; lb. \$1.75.

KLECKLEY SWEET SPECIAL—This special strain is the result of careful selection. It is an early sort, producing good crops of melons 18 to 20 inches long and 8 to 10 inches thick. The skin is dark green without markings, and the flesh is exceptionally sweet. Postpaid. Pkt. 5c; oz. 15c; $\frac{1}{4}$ lb. 35c; lb. \$1.00.

BLACK SEEDED ICE CREAM—Round shaped melons with thin, ivory colored skin. Pink meated and of fine quality. It will keep late into the winter. Very prolific. Matures very early. Postpaid. Pkt. 5c; oz. 15c; $\frac{1}{4}$ lb. 35c; lb. \$1.00.

PRESERVING CITRON—Round green fruits distinctly marked with irregular stripes. Used for preserves and candied fruit. **RED SEEDED** or **GREEN SEEDED**. Postpaid. Pkt. 5c; oz. 20c; $\frac{1}{4}$ lb. 50c.

BOTTLE MUSHROOM SPAWN

Grown in sterile bottles which are removed and the spawn then packed in cartons. One carton of bottle spawn sufficient for 40 sq. ft. of bed. Produces fine white mushrooms. Postpaid. Per carton \$1.00.

Parsnips

Culture same as carrots, except time of planting, which should be about May 1st.

***GILL'S SUCCESS**—Longer roots than the Tender Heart variety and better adapted to market purposes, as it is not so thick at the crown and will bunch better. The smooth, white roots cook tender and sweet. Postpaid. Pkt. 5c; oz. 20c; $\frac{1}{4}$ lb. 35c; lb. 90c.

***GILL'S TENDER HEART**—On account of the superior quality of this parsnip, our family has retained this seed annually for over thirty years. Unlike other parsnips, the heart is tender, never tough; roots are smooth, hollow crown, thick and heavy at top, tapering abruptly, making it easy to dig. We have the exclusive seed. Postpaid. Pkt. 5c; oz. 20c; $\frac{1}{4}$ lb. 35c; lb. 90c.

ALL AMERICAN—Roots clear white, clean, of fine texture and with small core. Intermediate shape, hollow crown. Recommended for market growers. Postpaid. Pkt. 10c; oz. 25c; $\frac{1}{4}$ lb. 45c; lb. \$1.00.

HARRIS MODEL—Medium length, very smooth and white and remarkably free from small roots and prongs. Recommended for home as well as market gardens. Pkt. 10c; oz. 25c; $\frac{1}{4}$ lb. 45c; lb. \$1.00.

Peppers

Start plants in a hot bed or in pots in a warm room in March. Transplant in open ground May 10th to 20th, rows $3\frac{1}{2}$ feet wide, 2 feet in rows.

HARRIS EARLY GIANT—The earliest of the large peppers and exceedingly mild and sweet. It is ideal for those localities having short season and also valuable for market where ripe, red peppers are in demand. It averages about $3\frac{1}{2}$ inches long and $2\frac{1}{2}$ inches thick. Postpaid. Pkt. 10c; $\frac{1}{2}$ oz. 40c; oz. 65c; $\frac{1}{4}$ lb. \$2.00.

OKAVIEW WONDER—A week earlier than California Wonder; slightly smaller, but blockier and more symmetrical. It has the same thick walls and high quality. Yields heavy and very uniform. Postpaid. Pkt. 10c; $\frac{1}{2}$ oz. 40c; oz. 65c; $\frac{1}{4}$ lb. \$2.00.

CALIFORNIA WONDER—This fine pepper has the heaviest meat of all. Large, blocky fruit, exceptionally mild and sweet. Fruit upright, crimson, measuring $4\frac{1}{2}$ inches long by 4 inches in diameter. Season medium. Postpaid. Pkt. 10c; $\frac{1}{2}$ oz. 40c; oz. 65c; $\frac{1}{4}$ lb. \$2.00.

WORLD BEATER—One of the best large peppers. Early, thick flesh, mild and sweet, 5 inches long by $3\frac{1}{2}$ inches thick. Postpaid. Pkt. 5c; $\frac{1}{2}$ oz. 30c; oz. 50c; $\frac{1}{4}$ lb. \$1.50.

RUBY KING—Large, attractive fruit about 4 inches long. Bright red when ripe. Thick meated. Postpaid. Pkt. 5c; $\frac{1}{2}$ oz. 30c; oz. 50c; $\frac{1}{4}$ lb. \$1.50.

LONG RED CAYENNE—Long red peppers; extremely hot. Postpaid. Pkt. 5c; oz. 50c.

MUSTARD

GIANT SOUTHERN CURLED—Large variety with fine curled leaves. Postpaid. Pkt. 5c; oz. 15c; $\frac{1}{4}$ lb. 25c; lb. 75c.

FORDHOOK FANCY—A handsome, vigorous growing, mild variety, standing a long time before going to seed; leaves bright green, intensely curled and fringed at the edges. Postpaid. Pkt. 5c; oz. 15c; $\frac{1}{4}$ lb. 25c; lb. 80c.

BLACK MUSTARD—A distinctly pungent sort with yellow-green, broad oblong toothed leaves. Seeds used for preparing ground mustard. Postpaid. Pkt. 5c; oz. 20c; $\frac{1}{4}$ lb. 35c; lb. \$1.00.

TENDER GREENS—Sometimes called mustard spinach. A rapid growing Oriental greens producing immense yields. It is suited for early spring or fall sowing. Mild mustard flavor. Easy culture. Postpaid. Pkt. 10c; oz. 15c; $\frac{1}{4}$ lb. 35c; lb. \$1.00.

ONIONS

CULTURE—A rich loam is best fertilized with well rotted manure and Garden Grow fertilizer. Sow seed in February or March if the condition of the ground and the weather will permit. Sow with drill in rows 14 to 16 inches apart; cover half-inch deep. Hoe with wheel hoe as soon as they are up, but do not more than scrape the surface as onions do not stand deep cultivation. Thin them to about 8 plants to the foot. It requires 3 to 4 lbs. of seed to the acre. Onions do well year after year on the same ground.

Seed of the white onions can be planted in the spring, summer or fall for green onions. Those planted in the fall, about September 1st, will produce green onions to winter over for early spring use.

PRICES—Unless noted are uniformly: Postpaid. Pkt. 10c; oz. 40c; ¼ lb. \$1.25; lb. \$3.50. Write for prices on larger quantities.

***SELECT OREGON YELLOW DANVERS**—The main variety planted in Oregon and the Northwest. The onions are a rich coppery yellow; large and nearly globe-shaped with small necks. Early, heavy yielding and a splendid keeper.

AUSTRALIAN BROWN—An extra early, sure cropping variety, with long-keeping qualities. Bright reddish-brown skin. Largely used for growing sets.

***WALLA WALLA FRENCH**—Large, early yellow onion of mild flavor. Used by growers in Walla Walla territory for fall or early spring planting. Postpaid. Pkt. 10c; oz. 45c; ¼ lb. \$1.35; lb. \$4.00.

EARLY GRANO—Crop failed.

UTAH SWEET SPANISH—A giant globe shaped yellow onion with small top; mild sweet flesh. This development of the Riverside strain is an outstanding improvement. Growers that have tried it demand it again. More resistant to thrip and the skin does not break as easily as other strains we have tested. Postpaid. Pkt. 10c; oz. 45c; ¼ lb. \$1.35; lb. \$4.00.

PRIZETAKER—Extra large onions of mild flavor; globe-shaped with small necks; color bright straw.

LARGE RED WETHERSFIELD—Large, flattened onions; purplish red.



Onions, Utah Sweet Spanish

WHITE ONIONS

CRYSTAL WAX BERMUDA—A pure white onion, very flat, mild and sweet. Extra early. Postpaid. Pkt. 10c; oz. 50c; ¼ lb. \$1.50; lb. \$4.50.

WHITE PORTUGAL or SILVERSKIN—A medium early sort with flattened shape and clear white skin. Extensively planted by gardeners for green onions and is hardier than most sorts.

WHITE SWEET SPANISH—Similar in size and shape to Utah Sweet Spanish but pure white in color. Postpaid. Pkt. 10c; oz. 50c; ¼ lb. \$1.50; lb. \$4.50.

SOUTHPORT WHITE GLOBE—Handsome globe-shaped white onions noted for keeping qualities and heavy production. Highly recommended as a green bunching onion for spring and summer use.

WHITE BUNCHING—A white variety especially adapted for green onions. The stems are strong, the tops quite tall, while the white meat has good length. Very hardy and slow to run to seed.

EARLY WHITE BARLETA—The earliest and smallest of the white pickling onions.

JAPANESE GREEN ONION—This onion is grown by Japanese for winter use. They plant early in the spring and cultivate all summer, hilling it up with earth in the fall. The bleached stalk is often a foot long and one inch thick. It is harvested all winter. Postpaid. Pkt. 10c; ½ oz. 25c; oz. 40c; ¼ lb. \$1.25.

ONION PLANTS

BERMUDA and SWEET SPANISH—These plants will grow early onions of very mild flavor. Plant in the spring as soon as weather permits. Price postpaid, 1 bundle, about 100 plants, 30c; 2 bundles, 50c; 5 bundles, \$1.00; 10 bundles, \$1.75. Not prepaid, crate of about 6000 for \$3.50, F.O.B. Portland, Oregon; crate for \$3.00, F.O.B. Walla Walla, Washington. Write for prices on larger quantities.

HOTKAPS

Grow early flowers and vegetables by using Hotkaps. Prices, not prepaid. Home garden Package, with cardboard setter, 25 for 50c; 100 for \$2.75; 250 for \$4.00 (these two packages include Garden Setter and Tamper); 1000 @ \$10.75. Write for prices on quantities.

ONION SETS

***BOTTOM SETS**—Small onions grown from seed planted too thickly to reach mature size. They produce green onions in a short time, or if left to grow they will produce nice, large, dry onions earlier than those grown from seed. Postpaid. ¼ lb. 15c; lb. 25c. Not prepaid, lb. 20c; 10 lbs. @ 15c.

***SHALLOTS**—Popular perennial that multiplies each year. Desirable for early crop. Brown skin, mild, white flesh. Postpaid. ¼ lb. 20c; lb. 35c.

GARLIC

***LARGE FRENCH**—This giant variety will yield nearly double the common kind. Plant the sets very early in the spring. Postpaid. ¼ lb. 25c; lb. 35c.

***SILVERSKIN**—Large, late keeping variety. Postpaid. ¼ lb. 25c; lb. 35c.

Potatoes

We can supply certified seed of most leading sorts, such as Earliest of All, Early Rose, Irish Cobbler, Katahdin, Nettle Gem, Burbank, and others. Write for quotations.

PRICES ON SMALL LOTS—By mail: Postpaid. Lb. 20c; 3 lbs. 50c.

NEW IMPROVED SEMESAN BEL

For treating seed potatoes. See page 16.

SWEET POTATOES

CULTURE—Set out in rows four feet apart and 15 inches apart in rows, about May 5th to June 1st. Use sandy loam soil in a warm location. Acclimated fresh dug plants are very essential.

PRICES ON PLANTS—Strong, healthy plants of local growth. Postpaid. Doz. 50c; 3 doz. \$1.00; 100 @ \$1.75.

NANCY HALL—Produces good sized tubers of medium length and quite thick in diameter. The flesh is of a rich orange color and very sweet. They produced a nice crop here on our farm last season. It is more like a yam than a sweet potato.

PORTO RICO—A large, reddish skinned sort. Strong, vigorous grower, producing heavy crops.

GARDEN PEAS

CULTURE—Plant as early as the ground can be worked in the spring. Peas will not reach perfection if planted after May 1st, although they will make a fair crop. They should be well rooted before warm weather begins. If planted during February and March, they will mature before the aphids get started. Our Northwest grown seed is acclimated and will give better results. Pea seed planted in winter months should be treated with Semesan. Inoculate all legumes with NITRAGIN. See page 16.

PRICES—Unless noted are uniformly: Postpaid. Pkt. 10c; $\frac{1}{2}$ lb. 20c; lb. 35c. Not prepaid, lb. 25c; 5 lbs. of one variety @ 20c; 10 lbs. and up @ 18c; 100 lbs. @ 17c.

TALL VARIETIES

***WORLD'S RECORD**—An improved Gradus, being earlier and more dwarf. Darker green pods containing 7 to 9 peas of high quality.

***SURPRISE**—Very early. Vines 3 feet. Pods $2\frac{1}{2}$ inches. Fine quality and flavor. Excellent canning variety.

***GRADUS**—A large, deep green podded sort, popular with gardeners. It matures extra early and is quite productive.

***IMPROVED TELEPHONE** (Dark Green or Alderman strain)—By far the best variety of this type. Dark green vines and pods. Vigorous growth, 4 to 6 feet tall, producing enormous crops. Pods $4\frac{1}{2}$ to $5\frac{1}{2}$ inches long, containing 8 to 11 peas of high quality. Excellent for home gardens, market gardens and shipping.

***GIANT LUSCIOUS SUGAR** (Edible pods)—The large, broad pods are 5 to 6 inches long and are cooked like snap beans. Postpaid. Pkt. 10c; $\frac{1}{2}$ lb. 20c; lb. 35c. Not prepaid, lb. 30c; 10 lbs. @ 25c.

DWARF VARIETIES

***LAXTON'S PROGRESS or IMPROVED LAXTONIAN**—Pods larger than Hundredfold and a few days earlier. Vines medium dark green; pods handsome dark green; peas large and extra sweet. Very popular with home and market gardeners.

***HUNDREDFOLD**—Also called Blue Bantam. Early. Vines and pods very deep green. Peas large and of excellent quality.

***LITTLE MARVEL**—Superior to American Wonder with 3 inch pods and better quality.

***GIANT PODDED HAMPER**—Heavy bearing, dark green vines and pods. Excellent quality for market or home gardens.

***PACIFIC MARKET**—Resembles the Dwarf Telephone but darker green and much more productive. Vines two feet tall. High quality. Popular with shippers and market gardeners.

***GILBO**—Heavy dark green vines, giant pods larger than Improved Telephone. Excellent quality.

***DWARF ALDERMAN**—Same size pods, dark green color, and same season as Improved Telephone. Vines about $\frac{3}{4}$ feet tall.

***GIANT STRIDE**—Heavy yielding; high quality. Pods same size and shape as Alderman. Same season. Vines about 2 feet. Recommended for market and home garden.

***G.O.P. (Grand Old Pod)**—Largest pod of any of the dwarf varieties. Dark green vines and pods. Excellent quality.

***IMPROVED STATAGEM**—Valuable late variety.

SUCCESSION PEA COLLECTION

We offer the following, suited for home gardeners who wish a variety of peas running from early to late. Postpaid. 1 Pkt. each. Surprise, World's Record, Hundredfold, Improved Telephone and Giant Stride. Worth 50c for 35c; $\frac{1}{2}$ lb. ea. for 75c; or 1 lb. ea. for \$1.35.

"GETZUM GUNS" FOR KILLING WEEDS

We can supply the new model. Really kills weeds. Price, not prepaid, \$1.75.



Peas, Improved Telephone

Pumpkin

Plant May 10th to 20th in rows 10 feet wide and 1 feet in the row about 8 to 10 seeds to hill, thinning to two good plants. Turn vines with the row to permit cultivation. Use 200 lbs. Land Plaster to the acre, plowing it in; also 750 to 1000 pounds Garden Grow fertilizer.

***ORANGE WINTER LUXURY**—This improved strain of our own introduction is far better than the original. The skin, a rich golden orange, is covered with a fine netting, while the meat is very thick, fine grained and of rich golden yellow. It is by far the best pumpkin. Simply cook it done and it is ready for use in making pies. It requires less sugar and eggs than other varieties. Extra early and of medium flattened shape. A splendid keeper that has no equal in quality or appearance. Postpaid. Pkt. 5c; oz. 20c; $\frac{1}{2}$ lb. 40c; lb. \$1.25.

CONNECTICUT FIELD or JACK O'LANTERN—The common field pumpkin grown for stock feeding and Jack o'Lanterns. Rich orange colored skin. Postpaid. Pkt. 5c; oz. 15c; $\frac{1}{2}$ lb. 35c; lb. \$1.00.

SMALL SUGAR—Rather round fruit of small size, 5 to 7 inches in diameter. Smooth skin of bright orange color. Fine quality for pies. Early maturity. Postpaid. Pkt. 5c; oz. 15c; $\frac{1}{2}$ lb. 35c; lb. \$1.00.

KING OF MAMMOTH—A giant, often weighing 200 pounds; suited for feeding and exhibition. Postpaid. Pkt. 10c; oz. 20c; $\frac{1}{2}$ lb. 40c; lb. \$1.25.

OKRA

EARLY DWARF GREEN—Very productive, of short, deep green pods; extra early. Postpaid. Pkt. 5c; oz. 15c; $\frac{1}{2}$ lb. 35c; lb. \$1.00.

PERKIN'S MAMMOTH LONG GREEN—Medium early, very productive. Pods 7 to 8 inches long, slender, meaty, tapered, and ribbed. Postpaid. Pkt. 5c; oz. 15c.

Radish

CULTURE—Radishes can be planted almost the year around, except during cold weather months. They can be planted in the fall as late as October 15th. They are then available during winter months.

PRICES—Unless noted are uniformly: Postpaid. Pkt. 5c; oz. 15c; $\frac{1}{2}$ lb. 35c; lb. \$1.00. Write for prices on larger quantities.

***EARLY SCARLET TURNIP WHITE TIP**—See Sparkler White Tip.

***SPARKLER WHITE TIP**—The lower third is white with bright red on upper portion. High quality seed of our own growing.

***HALF AND HALF**—A very attractive, early turnip radish. Half red and half white. A splendid variety for market and fast becoming popular.

EARLY SCARLET GLOBE—Beautiful scarlet globe-shaped radish, of quick maturity and exceptionally fine flavor. Very fine market sort.

COMET—Ball shaped, bright scarlet; small tap roots. Splendid quality. Will remain crisp and solid when other early radishes have become pithy.

CRIMSON GIANT—A crimson, turnip-shaped radish that combines large size with superior quality. Popular for later spring and summer use.

LONG BRIGHT SCARLET WHITE TIP—The roots are 4 to 5 inches long, very attractive and fine quality.

WHITE ICICLE—A splendid white radish of long shape and with mild flavor. Very popular.

CINCINNATI MARKET—Crisp and brittle; deep scarlet color; five to seven inches long.

RADISH COLLECTION

We will mail one packet of each of the above 8 varieties of radish, and the first 3 varieties of winter radish listed below, worth 50c, for 35c; postpaid.

WINTER RADISHES

SCARLET CHINA—Roots of bright scarlet color. Fine quality. Sow in late August for winter use.

WHITE CHINESE—Long, white, stump rooted radish, always solid, crisp and mild.

JAPANESE NERIMA—This remarkable radish will grow over three feet long and weigh 10 to 15 lbs. each. If properly stored, they will keep through the winter like rutabagas. Plant about August 1st to 15th. Postpaid. Pkt. 5c; oz. 20c; $\frac{1}{2}$ lb. 40c; lb. \$1.35.

RHUBARB SEED

WAGNER'S GIANT—Large crimson stalks often one and a half feet long and weighing very heavy. One of the best. Rhubarb does not come uniformly true from seed. Postpaid. Pkt. 15c; oz. \$1.50; $\frac{1}{2}$ lb. \$5.50.

RHUBARB ROOTS

RIVERSIDE GIANT—Extra large stalks of rich color and fine flavor. Strong 1-year crowns with side roots. These will establish themselves quickly and practically all will grow. Postpaid. Each 20c; doz. \$1.50; 100 @ \$7.50. Write for quantity prices.

GERMAN WINE—Large stalks. Skin and flesh rich wine red. Postpaid. Each 35c; 3 for \$1.00; doz. \$2.50.

Rutabaga

CULTURE—Sow in drills, 3 feet apart; thin to 6 inches apart. May be planted from June 15th to July 15th. The later sowings produce the best quality.

IMPROVED PURPLE-TOP YELLOW—Produces smooth, globe-shaped roots of good size. Flesh deep yellow and fine grained. The best for table use; very rich and productive for stock feeding. It is early and will mature good roots planted late in the season. Very popular with gardeners for winter storage. Postpaid. Pkt. 5c; oz. 15c; $\frac{1}{2}$ lb. 35c; lb. \$1.00.



Spinach, New Giant Leaf

Spinach

CULTURE—Sow in drills 16 to 20 inches apart, thin to 3 inches. For early spring use, sow in the fall, or sow in early spring for later use. Fine fall spinach can be grown by planting seed August 20th to September 1st, and winter spinach can be planted until October 15th.

PRICES—Unless noted are uniformly: Postpaid. Pkt. 5c; oz. 20c; $\frac{1}{2}$ lb. 50c.

NEW GIANT LEAF—The largest and the most productive of any sort we have tried. Plants 20 inches across are not uncommon on good soil. The leaves are simply immense, of deep green, very heavy, brittle and tender. It is very slow to run to seed and is especially valuable for spring, summer and fall cutting. Orders limited to 1 lb.

NORTHLAND—A dark green selection out of Giant leaf. It has all the good characteristics of that variety and in addition, a darker color. Outstanding for home and commercial gardens. Orders limited to 1 lb.

***IMPROVED THICK LEAF or VIROFLAY**—This variety is very popular and we have a fine strain of seed. The leaves are broad and smooth and of medium deep green. It will stand more cold weather than any other sort and is very popular for early spring cutting. Postpaid. Pkt. 5c; oz. 20c; $\frac{1}{2}$ lb. 35c; lb. \$1.00.

HOLLANDIA—Crop failed.

LONG STANDING SAVOY—Crop failed.

NEW ZEALAND SPINACH

A good summer vegetable which resists the heat and can be cut throughout the season. Plant seed after the ground becomes warm. It differs in appearance from the regular spinach but is prepared in the same manner. Postpaid. Pkt. 10c; oz. 35c; $\frac{1}{2}$ lb. \$1.00.

SALSIFY OR VEGETABLE OYSTER

MAMMOTH SANDWICH ISLAND—A good sort and most generally planted. Cultivate same as carrots. Postpaid. Pkt. 10c; oz. 25c; $\frac{1}{2}$ lb. 60c; lb. \$2.00.

A good lawn does not just happen. It is product of good soil, good seed from desirable varieties of grasses, and proper care. For grass seed, fertilizers, etc., see page 17. Write for our free bulletin "Practical Lawn Culture."

SQUASH

CULTURE—Plant from May 10th to 20th in hills 10 feet apart, 8 to 10 seeds to the hill. Thin to two strong vines. Sow 200 pounds of land plaster to the acre and plow in. Write us for fertilizer hints.

***GILL'S GOLDEN DELICIOUS**—We take much pride in offering this remarkable squash of our own origin. We have not found any variety that will equal it for quality. It is the finest squash for pies and even picked young as a summer squash, its quality is outstanding. The flesh and skin are a rich golden orange with no trace of green near the rind. The flesh is two to three inches thick. It cooks extra dry, fine grained and sweet. Many of our friends say, "It is better than a sweet potato." The skin is thin without a hard shell, but it is a fine keeper for winter use. On account of its high quality and attractive color, it has created a sensation with canners and those who tested it claim it has the highest starch content of any variety they have tried. It grows very vigorous and produces heavy crops. Postpaid. Pkt. 10c; oz. 20c; ½ lb. 45c; lb. \$1.35.

***GILL'S GOLDEN TABLE QUEEN**—A golden strain which we have selected and developed out of Table Queen. Thicker meated, better quality and more attractive for table use when baked. Also delicious used as a summer squash when the fruits are 2 to 2½ inches long. Do not fail to try this fine new squash. Postpaid. Pkt. 10c; oz. 20c; ½ lb. 40c; lb. \$1.35.

***TABLE QUEEN or ACORN**—A miniature squash growing about 7 inches long and 4 to 5 inches thick. Thin shelled; dark green; early maturing. Desirable for home and market garden, also for shipping. True seed of our own growing. Postpaid. Pkt. 5c; oz. 15c; ½ lb. 40c; lb. \$1.35.

***BOHEMIAN (Delicata)**—A small individual type very popular on the local market. Color cream, mottled and striped with green. Postpaid. Pkt. 10c; oz. 20c; ½ lb. 50c; lb. \$1.50.

***GENEVA DELICATA**—Same color as above. A larger and more prolific strain of this popular squash developed at New York Exp. Station. Very attractive, and excellent quality. Recommended for home and market gardens. Postpaid. Pkt. 15c; oz. 30c; ½ lb. 75c; lb. \$2.00.

BOSTON MARROW—Skin and flesh reddish yellow. Postpaid. Pkt. 5c; oz. 15c; ½ lb. 35c; lb. \$1.00.

DELICIOUS—An extra sweet, fine-grained, dry cooking squash. Medium size, top shaped with greenish-black skin; flesh very thick, orange colored with small seed cavity. Postpaid. Pkt. 5c; oz. 20c; ½ lb. 40c; lb. \$1.35.

***BANANA**—This valuable squash is in great demand and we have a very fine strain. The exterior of the skin is grayish-green color, while the meat is a rich orange. The average size is from twenty-four to thirty inches in length and six inches in diameter. Postpaid. Pkt. 5c; oz. 20c; ½ lb. 40c; lb. 1.35.

RED BANANA—Same as above except skin reddish orange, thick and of exceptional quality. Postpaid. Pkt. 5c; oz. 20c; ½ lb. 40c; lb. \$1.35.

***BABY HUBBARD or KITCHENETTE HUBBARD**—They average about 6 to 8 pounds each. On account of their small size and heavy weight they are especially suited for crating. Postpaid. Pkt. 5c; oz. 25c; ½ lb. 50c; lb. \$1.50.

***BLUE HUBBARD**—Colby's strain. A quality Hubbard with gray-blue skin and of extra choice flavor. Postpaid. Pkt. 5c; oz. 20c; ½ lb. 50c; lb. \$1.50.

***TRUE HUBBARD**—Selected strain, and while we do not consider it equal to Delicious in flavor, it is a heavier yielder and better known in the market. We have a true stock of seed carefully selected for color, shape and quality. Postpaid. Pkt. 5c; oz. 15c; ½ lb. 40c; lb. \$1.35.

***VERMONT HUBBARD**—Same season, shape and color as True Hubbard, but averages 6 to 10 pounds each and very high in quality. Postpaid. Pkt. 10c; oz. 25c; ½ lb. 50c; lb. \$1.50.

***YAKIMA MARBLEHEAD**—Large slate colored variety of fine quality. It produces heavy yields of thick meated squash. Popular shipping variety. Postpaid. Pkt. 5c; oz. 15c; ½ lb. 40c; lb. \$1.25.



Squash, Gill's Golden Table Queen

SUMMER SQUASH

MAMMOTH SUMMER CROOKNECK—Grows larger than the common sort. Fine for summer use. Postpaid. Pkt. 5c; oz. 15c; ½ lb. 35c; lb. \$1.00.

COCOZELLE or ITALIAN MARROW—Dark green when young, changing to lighter green as it matures. One of the earliest kinds and of high quality. Postpaid. Pkt. 5c; oz. 15c; ½ lb. 45c; lb. \$1.25.

MAMMOTH WHITE BUSH SCALLOP—Early; large, pure waxy white skin; somewhat flattened in shape. Postpaid. Pkt. 5c; oz. 15c; ½ lb. 35c; lb. \$1.00.

ZUCCHINI (Italian Squash)—It should be eaten quite young, when 3 to 6 inches long. The color is mottled deep green. Easy to grow. Postpaid. Pkt. 5c; oz. 20c; ½ lb. 50c; lb. \$1.50.

BLACK ZUCCHINI—Like above, except much darker green color. Postpaid. Pkt. 5c; oz. 20c; ½ lb. 50c; lb. \$1.50.

SQUAGHETTI—Smooth creamy skin like a vegetable marrow. When cooked whole for 20 minutes and cut open the flesh is in loose shreds like spaghetti and very tasty when seasoned. Do not use until fully matured. Matures in about 60 days and keeps well in storage. Postpaid. Pkt. 10c; oz. 25c.

SUNFLOWER

MAMMOTH RUSSIAN—This is one of the heaviest yielders and produces extra large heads, well filled with large, plump seed. Postpaid. Oz. 5c; lb. 35c. Not prepaid, lb. 25c; 10 lbs. @ 17c lb.

Tomatoes

CULTURE—Plant seed in box inside or in hotbed from February 15 to March 1. Transplant May 10 to 20; rows 6 feet wide and 5 to 6 feet in rows; use light, loamy soil, well cultivated and fertilized.

***GILL'S SELECTED EARLIANA**—For years we have given personal selection to this strain and believe we now have the largest and smoothest first early tomato yet offered. The fruit is of bright deep red color, rather thick from stem to blossom and unusually solid. Owing to the fact that it is a shy seeder we must ask more for the seed than other sorts. Do not confuse this with the ordinary strains of Earliana. Reports from the large growers claim this is the best strain of Earliana they have tried. Also reports from hot climates indicate it is unusually successful. One grower picking continuously from July until November; storing green ones then for December supplies. This is made possible by a minimum of cracked fruits. Postpaid. Pkt. 10c; ½ oz. 25c; oz. 75c; ½ lb. \$2.00.

***HILL SELECTED EARLIANA**—Saved from special plants marked in the field. Postpaid. Pkt. 25c; ½ oz. \$1.25; ½ oz. \$2.25; oz. \$4.00.

(Tomatoes—Continued)

***WASATCH BEAUTY**—In 1939, we introduced this remarkable tomato which is the most promising new variety that has appeared for some time. It has been grown by the gardeners near Ogden, Utah, for several seasons and is considered a superior variety by them. It is early in maturity and very heavy bearing. The branches terminate in a cluster of fruit making a compact plant and more plants may be set per acre. The fruit is round, firm and smooth; of a beautiful red color, and borne in clusters of three to six good sized tomatoes. It is an especially good shipping and canning variety. Both market and home gardeners should try this outstanding new tomato. Seed of our own growing. Postpaid. Pkt. 10c; 1/2 oz. 35c; 1/4 oz. 60c; oz. \$1.00; 1 lb. \$3.00.

***RED HEART**—We also introduced this tomato with flesh the deepest red in color yet found. One that is heavy bearing, long keeping, globe shaped. It is sure to be a valuable shipping and canning variety. Fruits picked entirely green will develop into ripe fruits of excellent quality and bright blood red when out. Seed of our own growing. Postpaid. Pkt. 10c; 1/2 oz. 25c; oz. 75c; 1 lb. \$2.00.

RUTGER'S (Certified seed) — Notable for high yield and uniform ripening of medium to large fruits of fine quality. Shape similar to Marglobe, but more flattened at the stem end. Flesh firm and red. Especially recommended for commercial canning and juice. Postpaid. Pkt. 10c; 1/2 oz. 30c; oz. 50c; 1 lb. \$1.50.

SCARLET DAWN—Medium vines, very prolific. Medium large fruit, smooth, globular; attractive bright scarlet. Fine quality and flavor. Desirable for home garden, shipping and canning. Postpaid. Pkt. 10c; 1/2 oz. 25c; oz. 75c; 1 lb. \$2.00.

BREAK O'DAY—Ten to twelve days earlier than Marglobe. Solid fruit of bright scarlet; very few seeds. Disease resistant. Desirable for home canning. Postpaid. Pkt. 10c; 1/2 oz. 35c; oz. 60c; 1 lb. \$1.75.

***POTENTATE** — Exceptionally heavy bearing greenhouse tomato. Fruits smooth, bright red, medium size, and very uniform. Postpaid. Pkt. 25c; 1/2 oz. \$1.25; 1/4 oz. \$2.25; oz. \$4.00.

THE PRITCHARD (Scarlet Topper) — In earliness similar to Break O' Day. Exterior and interior color intense scarlet. Fruit globe shaped and very solid. A tremendous cropper. Postpaid. Pkt. 10c; 1/2 oz. 25c; oz. 40c; 1 lb. \$1.25.

JOHN BAER—Extra early, large, bright scarlet fruit, smooth and firm. Postpaid. Pkt. 10c; oz. 45c.

***PEPPER TOMATO**—We have selected this for several seasons and now have heavy yields of large, smooth fruit, ideal for market. It is very resistant to rain cracks. Practically every fruit is smooth, running from globe to oblong shape, and they are exceptionally solid, containing very little seed. The fruit is red with a pink tone and the sweetest of any we have tried, being unusually free of acid. Ideal for tomato juice and by far the best for slicing. Postpaid. Pkt. 10c; 1/2 oz. 40c; oz. 75c; 1 lb. \$2.50.

BONNY BEST—We carry an extra fine strain of this early variety. Medium sized, uniform fruit of bright scarlet. Postpaid. Pkt. 5c; oz. 35c; 1/4 lb. \$1.15; lb. \$3.50.

STOKESDALE—Matures a week to 10 days earlier than Marglobe, also larger. Almost free of stem-end crack. Produces heavy crops. Postpaid. Pkt. 10c; 1/2 oz. 25c; oz. 75c; 1 lb. \$2.00; lb. \$6.00.

MARGLOBE—Almost the same season as Bonny Best, but the fruit is larger. Very resistant to disease and a very heavy cropper. Postpaid. Pkt. 5c; oz. 35c; 1/4 lb. \$1.15; lb. \$3.50.

DWARF STONE—Tree type plants, producing large, smooth, meaty fruit of bright red color. Postpaid. Pkt. 10c; oz. 45c.

MINGOLD—1940 All American Silver Medal Winner. An early yellow tomato of fine flavor and quality. Medium large, solid fruits. Postpaid. Pkt. 10c; 1/2 oz. 40c; oz. 75c.

GOLDEN QUEEN—Large, bright yellow fruit. Postpaid. Pkt. 10c; oz. 45c.

PEAR TOMATOES—Popular for preserves and mature heavy yields quite early. We can supply both red and yellow. Postpaid. Pkt. 5c; oz. 50c.



Pepper Tomato

GROUND CHEERY or **HUSK TOMATO**—Prized for preserves, pie or sauce. Will keep into the winter. Fruit yellow. Postpaid. Pkt. 5c; oz. 50c.

Turnips

Sow broadcast from August 1 to September 1 for late turnips. Milan varieties can be sown as late as October 1.

PRICES—Unless noted are uniformly: Postpaid. Pkt. 5c; oz. 10c; 1/4 lb. 30c; lb. 75c.

EXTRA EARLY WHITE MILAN—Among the earliest; roots clear white, smooth, flat and good quality. The best for early planting and late fall sowing. Postpaid. Pkt. 5c; oz. 20c; 1/4 lb. 45c; lb. \$1.25.

EXTRA EARLY PURPLE TOP MILAN—Similar to Extra Early White Milan except the roots are flatter and are attractive purple red on the upper portion. Postpaid. Pkt. 5c; oz. 20c; 1/4 lb. 45c; lb. \$1.25.

EARLY SNOWBALL—An extra early, round turnip, snow white, crisp and solid.

POMERANEAN WHITE GLOBE—Good either for stock or table and resists the worms the best. One of the best keepers.

PURPLE TOP WHITE GLOBE (See back cover)—The best all-around turnip for fall and winter use. Its beautiful color, pure white with purple top, combined with its smooth globe shape, fine sweet flavor and its wonderful productiveness put this turnip in the top class for market or home use.

WHITE EGG—Pure white, egg shaped; early.

COW HORN—A large, long-rooted, white turnip.

SHOGAIN (Foliage Turnip)—A Japanese variety, very popular for greens. The leaves grow upright about 2 feet high. Roots semi-globe, pure white, tender, sweet. Postpaid. Pkt. 5c; oz. 15c; 1/4 lb. 40c; lb. \$1.25.

RAPA—An Italian vegetable of the turnip family. Provides greens for fall, winter and spring use that are far superior to the usual turnip greens. Postpaid. Pkt. 10c; oz. 20c; 1/4 lb. 50c.

YELLOW FLESHED TURNIPS

***YELLOW BORTFELDER**—A heavy cropping, long-keeping variety, in favor with dairymen.

ORANGE JELLY or **GOLDEN BALL**—The best yellow sort for market or family use. Roots medium sized, round and smooth, with yellow skin and flesh. One of the best for winter keeping.

PURPLE TOP YELLOW ABERDEEN—Extensively grown for stock feeding. Good keeper.

RUTABAGA—See page 13.

TOBACCO

CONNECTICUT SEED LEAF—The earliest maturing sort for the Northwest. Pkt. 10c; oz. 75c.

INOCULATE ALL LEGUME SEEDS WITH

NITRAGIN

1898—FORTY THREE YEARS OF SERVICE—1941

When ordering, Always state name of seed.

ALFALFA, all Clovers

Size	Retail
1/2 bu. each...	\$.30
1 bu. each...	.50
2 1/2 bu. each...	1.00

PEAS (All Varieties) VETCHES (All Varieties)

1/2 bu. each...	\$.25
1 bu. each...	.35
1 3/4 bu. each...	.55
5 bu. each...	1.50
12 1/2 bu. each...	3.60

BEANS String, Wax, Kidney

1/2 bu. each...	\$.25
1 bu. each...	.35
5 bu. each...	1.50

*The 30 bu. size as listed above is a carton which contains six 5 bu. size cans.

LESPEDEZA

Size	Retail
Small (Inoculates up to 50 lb. seed)	\$.45
Large (Inoculates up to 100 lb. seed)65

SOYBEANS, LIMA BEANS, COW PEAS, PEANUTS

Small, (Inoculates up to 120 lb. seed) \$.30
*5 bu. each58
25 bu. each	2.60
<i>(One can)</i>	
*30 bu. each	3.45
<i>(6-5 bu. cans)</i>	

GARDEN SIZE Garden Peas & Beans Sweet Peas & Lupines

Enough for 6 lbs. seed
Retail Price 10c each



Plant Protectors

Protect the cabbage and Cauliflower Plants

The Maggot Fly is the greatest pest to these plants and "Keepway Plant Protectors" will give the plants 90 to 100% protection. The size of the Protector is 3" by 3", and will cost as follows, postpaid to the fourth zone, beyond which send additional; package of 24 for 10c; 72 for 25c; 144 for 45c; 500 for \$1.25; 1000 for \$1.95. Write for prices on larger quantities.

Semesan

SEMESAN—A general disinfectant for vegetable and flower seeds or bulbs, and certain plant diseases. Postpaid, 1/3 oz. Pkt. 10c; 2 oz. can 35c; 1 lb. can \$2.25.

NEW IMPROVED SEMESAN BEL—A dip disinfectant for seed potatoes. Postpaid. 2 oz. Pkt. 25c; Not prepaid, 1 lb. can \$1.50.

NEW IMPROVED SEMESAN, JR.—A dust disinfectant for seed corn. Postpaid. 1 1/2 oz. Pkt; 2 for 25c or 13c each. Not prepaid, 1 lb. can 75c.

NEW IMPROVED CERESAN—A low cost dust disinfectant for wheat, oats and barley. Postpaid, 4 oz. can 30c. Not prepaid, 1 lb. can 75c; 5 lb. can \$3.25. Write for further description, directions for use and prices on quantities. It is not expensive.

Our system for growing cabbage, broccoli, and cauliflower plants enables us to ship long distances.

VEGETABLE PLANTS

NO PLANTS SENT C. O. D. — 500 PLANTS WILL BE SUPPLIED AT THE 1000 RATE

EARLY CABBAGE—Grown in the open ground and wintered over. Good, strong, healthy plants ready November 1st to April 15th. Can be shipped anytime weather permits. **EARLY JERSEY WAKEFIELD, PORTLAND ROUNDHEAD, GILL'S OREGON BALLHEAD, LARGE WAKEFIELD, DANISH BALLHEAD, DANISH ROUNDHEAD, and JERSEY KALE**—Postpaid. Doz. 25c; 3 doz. 50c; 100 @ \$1.25. Not prepaid, 100 @ \$1.00; 1000 @ \$4.00.

EARLY CAULIFLOWER—Greenhouse grown, ready March 15th to April 15th.

EARLY SNOWBALL—Postpaid. Doz. 40c; 3 doz. 80c; 100 @ \$2.00.

LATE CABBAGE—Well hardened plants grown in the open. Ready June 10th to September 1st.

GILL'S OREGON BALLHEAD, DANISH ROUNDHEAD, GLORY OF ENKHUIZEN, DANISH BALLHEAD, ALL HEAD EARLY, COPENHAGEN MARKET, RED CABBAGE, SAVOY—Postpaid.

Doz. 20c; 1 doz. 50c; 100 @ \$1.00. Not prepaid, 100 @ 75c; 1000 @ \$3.25; 5000 @ \$3.00 per 1000.

LATE CAULIFLOWER—Grown in the open. Ready June 20th to August 15th.

NOVEMBER-DECEMBER, ALL SEASON'S, GREEN BROCCOLI, ST. VALENTINE BROCCOLI

Postpaid. Doz. 25c; 3 doz. 60c; 100 @ \$1.50. Not prepaid, 100 @ \$1.25; 1000 @ \$4.50.

BRUSSELS SPROUTS—Ready June 20th to August 15th. Prices same as late cabbage.

KALE PLANTS—Grown in open. Ready June 10th to September 1.

TALL SCOTCH CURLED, DWARF GERMAN, JERSEY KALE, GEORGIA COLLARDS, WINTER PROOF THOUSAND HEADED KALE—Same price as late cabbage plants. Ready same season.

PEPPER PLANTS—Ready May 1st to June 15th—**CALIFORNIA WONDER, HARRIS EARLY GIANT, OAKVIEW WONDER**—Postpaid. Doz. 40c; 3 doz. 80c; 100 @ \$2.00.

TOMATO PLANTS—Frame or greenhouse grown. Ready April 25th to June 15th.

GILL'S SELECTED EARLIANA, BONNY BEST, THE PRITCHARD, BREAK O' DAY, RUTGER'S, WASATCH BEAUTY, RED HEART, SCARLET DAWN, PEPPER TOMATO—Postpaid. Doz. 40c;

3 doz. 80c; 100 @ \$2.00. For quantity, please write.

CELERY—**UTAH JUMBO and GOLDEN SELF BLANCHING TALL**—Transplanted. Ready March 15th.

Postpaid. Doz. 30c; 3 doz. 60c; 100 @ \$1.50. Field grown. Ready June 1st. Not prepaid, 1000 @ \$6.00.

BERRY PLANTS

THORNLESS BOYSENBERRY—Same large vines and berries, but a few days earlier than the regular thorny Boysenberry. Has the advantage of lengthening the season as well as no thorns. Postpaid. 1 yr. tips, each 35c; 3 for \$1.00; 10 for \$2.50; 100 for \$17.50.

BOYSENBERRY (Thorny) and YOUNGBERRY—Postpaid. 1 yr. tips, each 25c; 3 for 50c; 7 for \$1.00; 12 for \$1.50; 100 for \$7.00; 1000 for \$60.00. (50 at 100 rate; 500 at 1000 rate). 680 plants per acre.

NECTARBERRY—A large vine berry about the same size as Boysenberry, but beginning to bear just about the time Boysenberries are through. Flavor resembles a blend of Youngberry and Red Raspberry. Postpaid. 1 yr. tips, each 25c; 7 for \$1.50; 12 for \$2.50.

RAUER THORNLESS LOGANBERRY (Patented)—Thrifty, heavy bearing loganberries without the thorns. Postpaid. 1 yr. tips, each 25c; 10 for \$2.00; 100 for \$15.00.

GRASS, CLOVER, ALFALFA and GRAIN SEEDS

We can supply various grasses, clovers, alfalfa and grain seeds. We can also supply mixtures. Write for prices. State nature of your soil and requirements.

Write us for prices on VETCH, EMMER, SUDAN GRASS, MILLET, FIELD PEAS, BUCKWHEAT, CHEAT GRASS, FETERITA, FLAX, DWARF ESSEX RAPE, SOY BEANS, and SUGAR CANE.

Prices are usually changing throughout the season, so we do not quote them here, but will be glad to quote prices, or you may remit what you desire and we will fill the amount according to market prices. We will also mail samples. We handle only high-grade seeds.

HIGH GRADE LAWN GRASS

WRITE FOR PRICES ON QUANTITIES. We supply grasses for golf courses. Let us figure with you. Prices quoted are subject to market change without notice.

Prices marked postpaid apply up to and including fourth zone, beyond which send additional. We specialize in high-grade lawn grass seed. During the past few years we have supplied lawn seed for some of the largest institutions in the state. Whether it is a small lawn or a large one, we can supply the seed and we will be glad to quote you either on mixtures or separate grasses. Many of the lawn grass mixtures on the market contain rye grass seeds. We consider rye grass too coarse and too rapid of growth to be included in mixtures and therefore do not use them in our mixtures. In estimating the ground to be planted figure on one pound to 300 square feet of surface.

GILBRO SPECIAL—This super mixture is composed of the finest bladed grasses and are selected on account of their great endurance. It will make a soft velvety lawn of uniform texture and appearance. All varieties in this mixture are acid-loving grasses, thus they respond rapidly with acid fertilizers which in turn reduces the weed menace. We have many reports from our customers, who are highly pleased with this mixture. It is adapted to shade or sun. We offer it either with or without white clover. Please specify when ordering. This mixture contains 40% creeping bent, making it necessary to ask the following prices: Postpaid. Lb. 90c. Not prepaid, 5 lbs. @ 85c; 10 lbs. @ 80c.

OREGON LAWN MIXTURE—A very good mixture made from pure grasses. It does not contain any rye grasses. We have sold this for years with fine results. It makes a hardy, fine-bladed turf well suited to the average soils. We offer it with white clover or without. Please specify when ordering. Postpaid. Lb. 75c. Not prepaid, 5 lbs. @ 65c.

***ASTORIA BENT**—A native acclimated sort grown in Clatsop County, Oregon. Besides creeping on the surface of the soil it has jointed roots which creep under ground. It is the best bent grass for high, well-drained soils and is very resistant to drought. It is often found growing in almost pure sand. It makes a thick, close turf, with fine leaf blades. Postpaid. Lb. \$1.00. Not prepaid, 5 lbs. or more @ 90c.

***SEASIDE BENT**—A native, acclimated variety, largely grown in Coos County. It creeps on the surface of the ground. Postpaid. Lb. \$1.00. Not prepaid, 5 lbs. @ 90c.

KENTUCKY BLUE GRASS—A splendid general purpose grass for lawns, with hardy growth and fine, close turf. 21 lbs. per bushel grade. Postpaid. Lb. 40c. Not prepaid, 5 lbs @ 35c.

BLUE GRASS and WHITE CLOVER—Well proportioned mixture. Postpaid. Lb. 65c. Not prepaid, 5 lbs. @ 55c.

ROUGH STALKED MEADOW GRASS—(Poa-Trivialis)—Very hardy; makes a fine, close turf. Valuable in shade. Postpaid. Lb. 75c.

CHEWING'S FESCUE—Extensively used for lawns and golf courses. It makes a fine, close turf, very resistant to tramping. One of our finest grasses. Postpaid. Lb. 80c. Not prepaid, 5 lbs. @ 70c.

CREEPING FESCUE—Rich, fine bladed foliage, making a splendid turf for shade or sun. Especially suited to sandy soils, banks, and terraces. Postpaid. Lb. 95c. Not prepaid, 5 lbs. @ 85c.

WHITE CLOVER—Often used for lawn. We offer a fancy grade of seed for this purpose. Postpaid. Lb. 95c. Not prepaid, 5 lbs. @ 85c.

ENGLISH RYE GRASS—Rather coarse for lawns, but is often used for large parks. It should be sown very thickly for such purposes. Postpaid. Lb. 35c. Not prepaid, 5 lbs. @ 25c.

RED TOP—Valuable for shade and low, wet ground. Postpaid. Lb. 50c. Not prepaid, 5 lbs. @ 40c.

CUPROCID

Fungicide for seeds and foliage. Prevents damping off. 4 oz. can 35c; 1 lb. can 90c. Postpaid.

COMMERCIAL FERTILIZERS

WRITE FOR PRICES, STATING QUANTITY.

Send for our free bulletin telling how to use fertilizers. We will gladly write you on any special fertilizer problem. Just tell us about your soil and what crop you intend to fertilize.

All prices quoted are NOT PREPAID and subject to market change without notice. Write for quantity prices.

ORGANIC FERTILIZERS

GILL'S GARDEN and LAWN DRESSING—A combination of Sheep Guano and chemical fertilizers that gives the necessary complete plant food with added stimulation of quick acting chemicals. Not prepaid, 70 lb. bag \$1.50.

5-10-7 (Garden Grow)—A complete general fertilizer suited for all around use in garden or orchard. Mainly organic. Postpaid, up to and including the Third Zone, 10 lb. bag, 75c. Not prepaid, 100 lbs. \$2.75.

BLOOD MEAL—12 to 15 ammonia. An organic form of nitrogen. Quick acting. Write for price.

FISH MEAL—Organic fertilizer high in nitrogen. Write for price.

SHEEP GUANO—Usually runs 2-1-2. Dry ground sheep manure taken from covered sheds. It is ground and sacked. On account of its high humus content it is a valuable fertilizer. Our stock is exceptionally good. Not prepaid, 100 lbs. \$1.35.

TANKAGE—A slaughter house by-product containing blood, meat and bone. Write for price.

3-10-10—Suitable for all root crops, cabbage, cauliflower and berries. Not prepaid, 100 lbs. \$2.50.

ROOTONE

"The new Hormone Powder"—Postpaid. 4 oz. Pkt. 25c; 2 oz. jar. \$1.00; 1 lb. can \$5.00. No solutions, no measuring, just dust and plant. The 2 oz. jar treats up to 3000 cuttings.

PEAT MOSS

An excellent mulch or humus. Especially valuable for lawns. We carry a very fine grade. Not prepaid, Bale \$2.75.

MINERAL FERTILIZERS

LAND PLASTER or GYPSUM—This contains sulphur in soluble form and is valuable for all legumes, potatoes and general garden use. Not prepaid, 100 lbs. \$1.00.

LIME HYDRATED—Especially suited for using on acid soils. Not prepaid, 100 lbs. \$1.50.

MURIATE of POTASH—Not prepaid, 100 lbs. \$2.50.

NITRATE of SODA—14 to 16 ammonia. Being soluble in water, it is a valuable fertilizer for the winter months applied on such crops as spinach, mustard greens, early spring cabbage, turnips, radishes, etc. Write for price.

SULPHATE of AMMONIA—Runs high in nitrogen. Write for price.

SUPERPHOSPHATE—16 to 21 phosphoric acid. It produces earlier maturity. Not prepaid, 100 lbs. \$1.50.

VIGORO

Vigoro is the ideal plant food for lawns, flowers, gardens, shrubbery and trees. It is easy to apply; results are quick and certain.

Clean, dustless, weedless, and odorless! Vigoro is not to be compared with any other plant food you have ever known. It isn't at all costly. Prices not prepaid, 100 lb. bag, \$3.50; 50 lb. bag, \$2.30; 25 lb. bag, \$1.40; 10 lb. package 70c; 5 lb. package, 45c; 1 lb. package, 10c; tablets (package of 24), postpaid, 10c.

FLOWER SEEDS

(All Flower Seeds Postpaid)

Asters

GILL'S HIGH-GRADE ASTERS

†Marked are asters of the wilt-resistant strains.

We aim to supply the very best asters that can be grown or purchased, and the most up-to-date varieties and types will be found in our list. Asters are one of the best cut flowers that can be grown.

Sow seed in boxes inside or in frames, about February 25th to March 15th, and transplant during May. Splendid blooms can be obtained by planting the seed in the open about May 1.

†**PRINCESS ANNE**—New. Attractive cutting type. Full crested center with several rows of strong guard petals. Peach blossom shade. Pkt. 25c.

†**PRINCESS BONNIE**—New. Same formation as above. Beautiful salmon rose shade. Pkt. 25c.

†**PRINCESS MARSHA**—New. Same formation as the two above. Strong, vibrant scarlet, boldly contrasted with rich gold center. Pkt. 25c.

†**EARLY GIANT PEACH BLOSSOM**—Opens white, flushes lavender pink. Pkt. 15c.

†**EARLY GIANT LIGHT BLUE**—Clear, rich light blue; extremely large flowered. Pkt. 15c.

SUPER GIANT EL MONTE—Deep glowing crimson; flowers large and fluffy. Pkt. 10c.

SUPER GIANT LOS ANGELES—Pure shell pink, fully double. Excellent cut flower. Pkt. 10c.

IMBRICATED POMPON—Erect growing plants, with cushion centered flowers, excellent for cutting. Mixed colors. Pkt. 10c.

***OREGON LOVELINESS**—This marvelous aster originated in Oregon and is the most distinct color we have ever seen. It is a large flower of the Crego type, fully double and carried on fine stems. The color opens a distinct rosy salmon with silvery reflection but as the flowers fully develop the color deepens to a rich coppery salmon. Pkt. 15c; ½ oz. 60c.

†**AURORA GOLDEN SHEAF**—Deepest yellow aster yet offered. Crest-like center fully double; popular with florists. Pkt. 10c.

AURORA BLUE—Light blue with yellow center. Pkt. 10c.

GIANT MAMMOTH PAEONY FLOWERED—A superb florist strain. Plants are 2½ feet to 3 feet tall, blooming with the Giants of California. **AZURE BLUE, PEACH BLOSSOM, PURPLE, †SILVER ROSE, WHITE and MIXED.** Pkt. 10c.

†**EARLY BEAUTY**—Flowers along with Crego type. **MIXED.** Pkt. 10c; ½ oz. 35c.

†**LATE BEAUTY**—They start blooming in September and last till frost. **MIXED.** Pkt. 10c; ½ oz. 35c.

CALIFORNIA GIANTS—Immense flowers, often 5 to 6 inches in diameter. Vigorous habit and long stems of the Beauty type, but has Crego type of bloom. Exceptional cut flowers. **PEACH BLOSSOM, LIGHT BLUE, DEEP ROSE, †PURPLE, WHITE and MIXED.** Pkt. 10c; ½ oz. 40c.

†**CALIFORNIA GIANT SINGLE**—Flowers 3 to 4 inches across on stems 18 to 24 inches long. **WHITE, ROSE, FLESH, PURPLE, DEEP LAVENDER and MIXED.** Pkt. 10c; ½ oz. 30c.

†**GIANT CREGO**—Immense fluffy flowers averaging 4 to 6 inches in diameter. Vigorous plants producing an abundance of these large flowers on good stems. **SHELL PINK, ORCHID, WHITE, CRIMSON, AZURE BLUE, PEACH BLOSSOM, DEEP ROSE, ROYAL PURPLE, DARK BLUE and MIXED.** Pkt. 10c; ½ oz. 30c.

GILL'S FANCY MIXED—A mixture of all colors in popular types. Pkt. 10c; ½ oz. 35c.

†**HEART OF FRANCE**—A beautiful rich dark red; two feet high; branching habit. Pkt. 10c.

HARDY PERENNIAL—(Michaelmas Daisy)—Single, fall flowering asters. **MIXED.** Pkt. 10c.

CALIFORNIA GIANT SUNSHINE—A cross between California Giant and Sunshine type. Some flowers have twisted petals, others have quilled petals. Flowers 6 inches across on plants 3 feet tall. Long wiry stems. **WHITE, LAVENDER, ROSE, SHELL PINK, PURPLE and MIXED.** Pkt. 15c.



Aster, Princess Anne

NOVELTY ASTER COLLECTION

We offer any 10 packets of asters, your choice of those priced at 10c; sent postpaid for 65c.

ACANTHUS (Bear's Breach)

Hardy perennial; giant decorative leaves 2 feet long and 1 foot wide. Pkt. 10c.

ACHILLEA

Hardy perennial of easy culture. Large clusters of small, double, pure white flowers. A fine everlasting flower for winter bouquets. Pkt. 10c.

ACONITUM (Monkshood)

NAPELLUS—Hardy perennial, growing spikes of curious shaped blue flowers. Pkt. 15c.

ADONIS

FLOS—Rare, small flowers of brilliant scarlet, suited for cutting. Pkt. 10c.

AFRICAN DAISY

Sow seed same as asters and plant in sunny position. They bloom all summer.

AURANTIACA—Flowers 2½ to 3 inches across of glossy orange, with dark disc and halo. Pkt. 10c.

HYBRIDS MIXED—Shades of white, yellow, orange and salmon zoned with black disc. Pkt. 10c.

AGERATUM

Annual, suited for boxes, pots and borders. **MIDGET BLUE**—New. Grows 2 to 3 inches high, with fine foliage and practically smothered with Ageratum blue flowers. Pkt. 15c.

BLUE PERFECTION—Dwarf, deep blue. Pkt. 10c. **MIXED**—All colors. Pkt. 10c.

AMARANTHUS

Brilliant foliage annual growing 3 to 5 feet high. **CAUDATUS**—Blood red, drooping. Pkt. 10c.

ANCHUSA

DROPMORE VARIETY—Splendid hardy perennial, easily started from seed. Grows 3 to 5 feet high, covered with rich gentian blue flowers during June and July. Pkt. 10c.

ALYSSUM

COMPACTUM VIOLET QUEEN—New. Very deep rich shade of violet, neat habit, free flowering. Pkt. 25c.

LITTLE DORRIT—Miniature white. Pkt. 10c.

CARPET OF SNOW—Grows 2 inches high and is heavily massed with white blossoms. Pkt. 10c.

COMPACTUM YELLOW—Annual. Dwarf yellow. Pkt. 10c.

LITTLE GEM—Dwarf compact habit; four inches high with white blossoms. Pkt. 10c; ½ oz. 30c.

LILAC QUEEN—Dwarf compact habit; flowers deep lavender. Pkt. 10c.

PERENNIAL SAXATILE COMPACTUM—Grows 1 foot high and makes a mass of small yellow flowers in May. Easy to grow. Pkt. 10c.

ANEMONE

PULSATILLA—Perennial. Violet to purple shades; blooming April and May. 1 foot. Pkt. 15c.

ST. BRIGID—Perennial. Wonderful range of colors in single, semi-double and double. Pkt. 15c.

AQUILEGIA (Columbine)

Hardy perennial. Start inside or in the open and transplant to permanent place.

SCOTT ELLIOTT LONG SPURRED HYBRIDS—Excellent range of colors. MIXED. Pkt. 10c.

LONG SPURRED—Blue or pink shades. Pkt. 15c.

ARABIS (Rock Cross)

Hardy perennial producing a mass of white flowers very early in the spring. Pkt. 10c.

ARCTOTIS (African Daisy)

Splendid cut flowers, growing about 2 feet high. Daisy-like flowers; white on upper portion of petal; reverse, pale lilac blue. Pkt. 10c.

ASPARAGUS

PLUMOSUS—Flat fern-like foliage. Grow in pots. Pkt. 15c.

SPRENGERI—Useful for baskets, window boxes, etc. Both of these asparagus are fine greens to mix in bouquets. Pkt. 15c.

AUBRIETIA (Rainbow Rock Cross)

LARGE FLOWERING HYBRIDS—Colorful, dwarf perennial suitable for rockeries and borders. Plant seed in June. Pkt. 15c.

BALSAM

Camellia Flowered

Hardy double annual growing 2 feet high. Plant inside or in hot bed in March. Plant out after danger of frost is over. MIXED. Pkt. 10c.

BEANS, SCARLET RUNNER

A fine climber. Pkt. 10c; ½ lb. 30c; lb. 45c.

BELLIS or ENGLISH DAISY

MONSTROSA DOUBLE—This giant type far exceeds the old type, being much larger. Mixed. Pkt. 10c.

BOCCONIA (Plume Poppy)

Hardy perennial of great beauty. Height 8 feet; foliage glaucous green; flower spikes cream colored and 3 feet long. Pkt. 10c.

BOLTONIA

Hardy perennial. Large clusters of daisy-like flowers blooming July to Sept. Lilac pink. Pkt. 10c.

BRACHYCOME

SWAN RIVER DAISY—9" high. Mixed. Pkt. 10c.

BROWALLIA

FANCY MIXED—Annual. Blue and white petunia shaped flowers. Pkt. 10c.

CACTUS SEED

All varieties mixed. Pkt. 15c.

CALENDULA, POT MARIGOLD

ORANGE FANTASY—Crested, coppery orange, petals edged mahogany red. Pkt. 10c.

ORANGE SHAGGY—Rich orange; petals long and deeply fringed. Pkt. 10c.

CHRYSANTHA—Clear buttercup yellow. Pkt. 10c.

RADIO—Rich orange; large quilled flowers. Pkt. 10c; ¼ oz. 20c; oz. 50c.

CAMPFIRE IMPROVED, FLORIST STRAIN—Dark orange with scarlet sheen. Pkt. 10c; ¼ oz. 30c.

ORANGE KING, FLORIST STRAIN—Large double flowers of orange red, with darker centers. Pkt. 10c; ¼ oz. 20c; oz. 50c.

DOUBLE MIXED—All colors. Pkt. 10c.



Arctotis

CALLIOPSIS

Showy annual of easy culture, blooming all summer. Sow in April in open.

GOLDEN CROWN—Yellow with maroon center. Pkt. 10c.

NIGRA SPECIOSA—2 feet, maroon red. Pkt. 10c.

CHOICE MIXED—All single colors. Pkt. 10c.

DOUBLE MIXED—Pkt. 10c.

CALIFORNIA POPPY

Popular annual which can be planted any time during spring, summer or fall. Fall plantings will bloom in the spring.

DOUBLE GOLDEN GLORY—Golden yellow, orange at center. Pkt. 10c.

LOVELY—Carmine rose, suffused salmon. Pkt. 10c.

RAMONA—Coppery gold, frilled. Pkt. 10c.

SCARLET BEAUTY—Deep scarlet. Pkt. 10c.

GRANDIFLORA GIANTS—Mixed. Pkt. 10c.

DOUBLE MIXED—Pkt. 10c.

CANDYTUFT

Annual sown in the fall will flower in early spring; sown in April will bloom in June.

GIANT HYACINTH—A selected strain, producing 6 to 7 large, erect, white spikes. Pkt. 10c.

FLESH PINK—A new shade. Pkt. 10c.

LAVENDER—Soft rose lavender. Pkt. 10c.

CRIMSON—Rich deep shade. Pkt. 10c.

MIXED—All colors. Pkt. 10c.

PERENNIAL (Iberis)—Mixed colors. Pkt. 10c.

CANNA SEED

Soak seed in warm water until they show signs of swelling and plant in hot bed. Transplant after danger of frost. They are interesting to grow, as new sorts come from seedlings. MIXED. Pkt. 10c.

CANTERBURY BELLS

Plant seed in box or frame in early spring, or they can be planted in the open ground about June 1st. Cover the seed very lightly and spread a paper over the surface until the seeds germinate.

ANNUAL—Bloom in 6 months from seed. 2½ feet; offered in VIOLET, ROSE and MIXED. Pkt. 10c.

CUP and SAUCER BELLS—The largest type, with cup and saucer-like flowers. WHITE, LIGHT BLUE, DARK BLUE, ROSE and MIXED. Pkt. 10c.

MEDIUM—Single, old fashioned type with bell-shaped blooms. MIXED. Pkt. 10c.

PYRAMIDALIS—Perennial. MIXED. Pkt. 10c.

PEACH BELLS—Perennial; saucer-shaped flowers on tall spikes. BLUE. Pkt. 10c.

CARDINAL CLIMBER

Graceful, quick growing climber covered with fiery scarlet blooms all summer. Pkt. 10c.

CARNATION

Perennial, blooming the first season.

GIANT FLOWERING — SCARLET, YELLOW, PINK, FLESH, ROSE, WHITE and MIXED. Pkt. 10c.

MARGUERITE MIXED—Large flowers. Pkt. 10c.

EVERBLOOMING—Almost continually in bloom from June to frost. Mixed colors. Pkt. 10c.

FLORIST'S MIXTURE—A special mixture from florist sorts. Can be used inside or out. Pkt. 15c.

CASTOR BEANS

Highly ornamental plants valuable for tropical effects. Useful for large beds or borders along paths and drives. Pkt. 10c; oz. 25c; 1 lb. 60c.

CELOSIA

Sow inside in March and set out in May, or sow outside in May. Very free flowering.

FLAME OF FIRE—Pyramidal branching plants. Each branch bearing a large, almost round, fiery scarlet head of coral-like structure. Pkt. 25c.

CHILDSII or CHINESE WOOL FLOWER—Produces large heads of rich colors, resembling certain silky wool materials. Useful for beds; also for cutting and drying. MIXED. Pkt. 10c.

EMPRESS (Cockseomb)—Very wide combs, crimson. Pkt. 10c.

PLUMOSA (Improved Feathered Type)—Pyramidal growth; 3 feet. SCARLET, YELLOW and MIXED. Pkt. 10c.

CENTAUREA

ROYAL SWEET SULTAN—Beautiful, sweet-scented flowers on long stems. Fine cut flowers. Sow early in spring. Finest mixed. Pkt. 10c.

WHITE LEAVED CENTAUREA—(Dusty Miller). Fine for bedding, vases, hanging baskets, pots, etc. Foliage silvery white. Hardy perennial. Pkt. 10c.

CERASTIUM (Snow in Summer)

Hardy, dwarf perennial with silvery foliage and small white flowers. Pkt. 10c.

CHRYSANTHEMUM, Annual

SINGLE MIXED—Grows about 2 feet high and blooms in mid-summer. Single, white and yellow flowers, zoned with yellow to red. Pkt. 10c.

DOUBLE MIXED—Yellow, white, etc. Pkt. 10c.

CINERARIA

Beautiful greenhouse, or indoor flower, easily grown from seed. High-grade mixture. Pkt. 25c.

CLARKIA

Easily grown annual; double flowers; fine for cutting. 2 feet. One of the finest annuals.

ALBA—White. Pkt. 10c.

ORANGE KING—Rich orange. Pkt. 10c.

PURPLE PRINCE—Fine rich purple. Pkt. 10c.

SCARLET QUEEN—Orange scarlet. Pkt. 10c.

SWEETHEART—Deep pink. Pkt. 10c.

DOUBLE MIXED—All shades. Pkt. 10c.

COBAEA SCANDENS

Rapid annual climber. Start indoors in March or plant outside in May. Large, bell-shaped blossoms. BLUE, WHITE and MIXED. Pkt. 10c.

COLEUS

Novel and attractive foliage. Grown easily from seed. Start indoors in March. Mixed colors. Pkt. 15c.

COREOPSIS

DOUBLE SUNBURST—Perennial. Deep golden yellow. Excellent cut flower. Pkt. 15c.

LANCEOLATA GRANDIFLORA—Hardy perennial. Large, showy, bright yellow. Pkt. 10c.

CORNFLOWER (Bachelor's Button)

DWARF JUBILEE GEM—Compact plants; covered with large, double blue flowers. Splendid for borders and cutting. Pkt. 10c.

DOUBLE BLUE—Fine for cutting. Pkt. 10c.

DOUBLE LAVENDER—Pkt. 10c.

DOUBLE ROSE—Large rose. Pkt. 10c.

DOUBLE MIXED—Various colors. Pkt. 10c.

CORN (Ornamental)

INDIAN—Bright colors, valuable for decorations in combination with gourds. MIXED. Pkt. 10c.



Cosmos, Sensation Pinkie

COSMOS

Hardy annual which, planted after danger of frost in the open, will bloom in the late fall.

SENSATION CARDINAL—Crimson. Pkt. 10c.

SENSATION PINKIE—Rose pink. Pkt. 10c.

SENSATION PURITY—Pure white. Pkt. 10c.

SENSATION MIXED—Blooms in 10 weeks from time of seeding. Pkt. 10c.

EARLY KLONDYKE ORANGE FLARE—Early flowering, bright orange. Pkt. 10c.

EARLY DOUBLE CRESTED—Single outer row of large petals, while shorter petals compose a full double center. PINK, CRIMSON, WHITE and MIXED. Pkt. 10c.

MAMMOTH EARLY FLOWERING—Planted in the open ground, they blossom in 60 to 90 days. The flowers average 4 to 5 inches across. WHITE, PINK, CRIMSON and MIXED. Pkt. 10c.

CUCUMBER, WILD VINE

Quick growing annual. Foliage green with sprays of white flowers. Pkt. 10c.

CUPHEA

FIREFLY—Annual, blooms about 14 weeks from seed. Dwarf compact habit, producing small fiery cerise red flowers. Excellent for rockery or border. Pkt. 15c.

CYCLAMEN

GIANT MIXED—A splendid mixture of brilliant and soft shades from a highly selected strain. Pkt. 25c.

CYNOGLOSSUM

(Chinese Forget-me-not)

Annual sweet-scented blue. 2 ft. Pkt. 10c.

DAHLIA SEED

Start like asters and transplant about May 1st.

*CHOICE MIXED—This mixture embraces many colors in different types. Pkt. 15c.

*COLTNESS MIGNON MIXED—Dwarf single flowers, suited for bedding. Good cut flowers. Pkt. 15c.

*DECORATIVE MIXED—Seed saved from choice varieties. Pkt. 25c.

*POMPON MIXED—Pkt. 15c.

*DOUBLE CACTUS—Mixture from named sorts. Pkt. 25c.

*SINGLE, COLLARETTE and MINIATURE dahlia seed. Each Pkt. 15c.

DATURA

Large trumpet flowers 6 inches long and 5 inches across. Flowers white with purple sheen. Two or three feet high. Pkt. 10c.

DELPHINIUM (Perennial Larkspur)

PACIFIC GIANTS—Extremely large; 100 per cent double. Practically mildew resistant. Offered in **WHITE** and **MIXED**. Pkt. 35c.

IMPROVED BELLADONNA (Special Strain)—Light blue, large flowered, strong grower. Pkt. 20c.

IMPROVED BELLAMOSUM (Special Strain)—Deep blue. Blooms 2½ inches across. Pkt. 20c.

***GIANT PRIZE MIXED**—Selected from Wrexham type. Giant flowers of the Hollyhock strain in mixed colors of single and double. Pkt. 25c.

PASTEL SHADES—Specially selected from large type. Very popular shades. Pkt. 25c.

DIANTHUS, PINKS

LACINIATUS SPLENDENS—Annual. Crimson, with large white eye. Pkt. 10c.

DOUBLE MIXED—Annual, 1 foot high. Pkt. 10c.

HARDY PINKS

DOUBLE DWARF CLOVE PINK—Compact growth, early flowering. Possesses a spicy clove fragrance. Perennial. **MIXED COLORS**. Pkt. 10c.

DIDISCUS, LACE FLOWERS

A rare flower with branched plants 18 inches high. Clusters of tiny flowers giving the effect of dainty lace. Color exquisite light blue. Pkt. 10c.

DIGITALIS, FOXGLOVE

Popular biennial of easy culture. Giant saucer-shaped flower tops each spike. **MIXED**. Pkt. 10c.

SHIRLEY MIXED—Giant strain. Pkt. 10c.

ECHINOPS (Globe Thistle)

Hardy perennial with silvery foliage and round close blue flower heads. 3 to 5 feet. Pkt. 10c.

EUPHORBIA

Annual, suitable for beds and borders.

VARIEGATA (Snow on the Mountain)—Attractive green foliage, veined white; 2 feet. Pkt. 10c.

FOUR O'CLOCK

Free flowering favorite that does well anywhere. Mixed colors. Very easy culture. Pkt. 10c; oz. 25c.

FUCHSIA

Double and single varieties in mixture. Fine selection. Pkt. 25c.

GAILLARDIA

INDIAN CHIEF—Annual. Single, bronze red flowers. Pkt. 10c.

PERENNIAL

DAZZLER—Giant gold and maroon red. Pkt. 10c.

PORTOLA HYBRIDS—Bronzy red, gold tipped. Pkt. 10c.

GERANIUM

ZONALE MIXED—A superb strain of the largest and finest. Start indoors. Pkt. 15c.

GERBERA (Transvaal Daisy)

Large, daisy-like blooms in shades of yellow and red on long stems. Sow seed singly, point up, cover lightly in greenhouse or hotbed. Water sparingly. Place in sunny location and protect from summer rains. Jamesoni Hybrids Mixed. Pkt. 20c.

GODETIA

Free flowering annual doing best in rather poor soil. Of easy growth and fine for cutting.

Dwarf Varieties

SINGLE THUNDERBOLT—Crimson. Pkt. 10c.

SINGLE WILD ROSE—Pastel rose with wavy petals. Pkt. 10c.

SINGLE MIXED—All shades. Pkt. 10c.

Tall Varieties

DOUBLE CHERRY RED—Deep red. Pkt. 10c.

DOUBLE LAVENDER—Highly recommended. Pkt. 10c.

DOUBLE RICH PINK—Clear deep pink. Pkt. 10c.

DOUBLE MIXED—Various shades. Pkt. 10c.

GEUM

MRS. BRADSHAW—A popular perennial with semi-double flowers over 2 inches in diameter. Color brilliant scarlet; fine cut flowers and easily started from seed. Blooms in June and July. Pkt. 10c.

LADY STRATHEDEN—The same type as Mrs. Bradshaw but a large double yellow. Pkt. 15c.

GILIA

MICRANTHA, FAIRY STARS—Annual. Tiny single star-like flowers in pastel shades; useful for borders and rockeries. Pkt. 10c.

GOURDS, ORNAMENTAL

Culture similar to cucumbers

SMALL WARTED—All shapes. Pkt. 10c.

SMALL MIXED—Main small sorts in mixture. Gourds are easy to grow. Pkt. 10c; oz. 30c.

LARGE MIXED—Main large sorts in fine mixture. Pkt. 10c; oz. 30c.

GYPSOPHILA, BABY'S BREATH

REPENS ROSEA—Perennial. Light rose, rock plant. Height 6 inches. Pkt. 10c.

PACIFICA—Perennial. These rose-colored flowers bloom first season from seed. Pkt. 15c.

ELEGANS ALBA—Annual. Small white clusters for mixing with bouquets. Pkt. 10c; oz. 30c.

PANICULATA—Perennial. Single. Pkt. 10c.

PANICULATA DOUBLE—Perennial. A large percent come with double white flowers. Pkt. 15c.

HELIANTHEMUM (Sun Rose)

MUTABILE—Perennial. Rock plant. Pkt. 10c.

HELICHRYSUM

STRAW FLOWER—Fine everlasting flowers to put away for winter. These bright-colored flowers are valuable for decoration and can be kept indefinitely. **MIXED**. Pkt. 10c.

HELIOTROPE

Start indoors, plant out in May.

LEMOINES GIANT—Extra large. Pkt. 10c.

HEUCHERA (Coral Belts)

SANGUINEA SPLENDENS—Perennial; 18 inches. Coral-red flowers, blooming in July and August. Pkt. 25c.

HIBISCUS, MARSH MALLOW

New giant types in mixture. Easily grown perennial with flowers 3 to 5 inches in diameter. Blooms in September. Pkt. 10c.

HOLLYHOCK

HARDY PERENNIAL—Double. Easily grown. **MAROON, PINK, ROSE, WHITE, YELLOW, SCARLET** and **MIXED**. Pkt. 10c.

INCARVILLEA (Hardy Gloxinia)

DELAVAYI—Hardy perennial on Western coast. Rose colored Gloxinia type flowers on stems 15 inches long. Blooms in June and July. Pkt. 10c.

IRIS

JAPANESE MIXED—Hardy perennial, blooming the second year. Pkt. 15c.

KOCHIA (Burning Bush)

Symmetrical oval plants, 3 feet tall, resembling an ornamental evergreen. Fine for hedges. Turns deep red in late fall. Pkt. 10c; oz. 25c.

KUDZU VINE

Fragrant wisteria-like flowers, with large green leaves, furnishing a dense shade. Easy to grow. Pkt. 10c.

LANTANA

Half hardy perennial greenhouse or bedding plant. Verbena-like heads of orange, white, rose, etc. **MIXED COLORS**. Pkt. 10c.

LATHYRUS

(Perennial Sweet Peas)

Strong growing hardy climber easily started from seed. Fine for cutting. **MIXED**. Pkt. 10c.

LAVENDER

Well known hardy perennial, growing about 3 feet high. Very fragrant. Pkt. 10c.

LARKSPUR, Annual

Hardy annual growing two to three feet high, splendid for beds or cutting.

DOUBLE STOCK FLOWERED TYPE

LUSTROUS CARMINE—Carmine rose. Pkt. 10c.
ROSAMOND—Deep pure pink. Pkt. 10c.

GIANT IMPERIAL TYPE

PINK KING—New. Soft salmon rose. Pkt. 25c.
CORAL KING—Coral pink. Pkt. 10c.
WHITE KING—Glistening white. Pkt. 10c.
BLUE BELL—Azure blue. Pkt. 10c.
BLUE SPIRE—Large deep blue. Pkt. 10c.
EXQ. PINK IMPROVED—Soft pink. Pkt. 10c.
LILAC SPIRE—Soft lilac. Pkt. 10c.
GIANT IMPERIAL MIXED—All colors. Pkt. 10c.
DWARF DOUBLE MIXED—Pkt. 10c.

LILY

REGALE—Beautiful hardy lily with large trumpet-shaped, sweet-scented flowers. Ivory white, shaded pink, tinged yellow at base of petals. Pkt. 10c.

LINARIA

This annual grows like a miniature snapdragon. Brilliant colors. MIXED. Pkt. 10c; 1/4 oz. 35c.

LINUM

Showy hardy perennial of easy culture from seed.
BLUE FLAX—Blue, 2 feet. Pkt. 10c.
FLAVUM—Golden yellow, 12 inches. Pkt. 15c.
GRANDIFLORUM RUBRUM (Scarlet Flax) — Hardy annual, 1 1/2 feet high. Pkt. 10c.

LOBELIA

Used for pots, edges or hanging baskets.
CRYSTAL PALACE COMPACTA—Best dark blue. Dwarf compact plants. Pkt. 10c.
HAMBURGIA—Large light blue with white eye. Trailing. Pkt. 15c.
SPECIOSA—Dark blue flowers and dark foliage. Trailing. Pkt. 10c.
DWARF MIXED—All colors. Pkt. 10c.

LUNARIA

(Honesty or Money Plant)

Silvery oval seed pods, prized for winter bouquets. It is a biennial, but it may be treated as an annual, if seed is sown early. Pkt. 10c.

LUPIN

RUSSELL'S GREEN SEAL (Re-selected) STRAIN. Pkt. 20 seeds 25c.
RUSSELL'S BLUE SEAL (Originator's) STRAIN. Pkt. 12 seeds 10c.
ANNUAL MIXED—Easily grown; spikes of pea-shaped blooms 2 feet high. Pkt. 10c.
PERENNIAL LUPIN—Hardy plants with spikes 3 feet in height, blooming May and June. White, Blue, Rose and Mixed. Pkt. 10c.

LYCHNIS (Jerusalem Cross)

Easily grown from seed and will bloom the first year. Beautiful heads of scarlet flowers on stems three feet high. Hardy perennial. Pkt. 10c.

MIGNONETTE

Keep a succession by sowing in April and July.
DEFIANCE MIXED—Extra large spikes, 15 to 18 inches long, deliciously fragrant. Pkt. 10c.

MYOSOTIS, FORGET-ME-NOT

Biennials, easily grown from seed
ALPESTRIS BLUE—Compact, upright growing. Pkt. 10c.
EVERBLOOMING—Blooms all summer. Pkt. 10c.

MORNING GLORY

SCARLETT O'HARA—Rich dark wine red color. Blooms in 65 days from seeding; prefers sandy soil. Pkt. 15c.
NEW CORNELL—Much like the above in color except it has a white margin. Pkt. 15c.
HEAVENLY BLUE—Climbing. Pkt. 10c.
CLIMBING MIXED—15 feet. Pkt. 10c.
IMPERIAL JAPANESE—Large fringed flowers in various colors. Climbing. Pkt. 10c.

MARIGOLD

GIGANTEA POT O'GOLD—New. Very neat, growing 12" to 15" in height, bearing a dozen or more large blooms at a time. Deep golden orange. Pkt. 25c.

SCARLET GLOW—New. A dwarf, double French variety. Bright, bronzy-red color, growing about 12" in height. Pkt. 25c.

AMERICAN BEAUTY (Chrysanthemum Flowered Incurved)—New type. Fully double. Shades of orange and yellow mixed. Pkt. 10c.

(Collarlette Varieties—Odorless Foliage)

KING'S RANSOM—The crest is larger and collar less conspicuous than Crown of Gold. Golden orange. Pkt. 10c.

YELLOW CROWN—Bright canary-yellow flowers. A fine companion to Crown of Gold. Pkt. 10c.

CROWN OF GOLD—Golden orange. Pkt. 10c.

(African Varieties)

GIGANTEA SUNSET GIANTS—Immense fragrant flowers, in a mixture ranging from deep golden orange to light yellow. 3 to 4 feet. Pkt. 10c.

YELLOW SUPREME—Large, fluffy blooms of rich creamy lemon-yellow color, practically free from the marigold odor. Pkt. 10c.

GUINEA GOLD—Brilliant double orange. Pkt. 10c.

LEMON ALL DOUBLE—Tall. Pkt. 10c.

ORANGE ALL DOUBLE—Tall. Pkt. 10c.

LARGE AFRICAN MIXED—Double. Pkt. 10c.

DWARF AFRICAN MIXED—Double. Pkt. 10c.

(French Varieties)

SUPER HARMONY—More than a hundred florets make up the head, forming a beautiful golden crown which, when fully opened, is 1 1/2" in diameter. This is surrounded by red-brown guard petals. Blooms profusely. Pkt. 10c.

DWARF DOUBLE HARMONY—Charming Scabiosa-like flowers; golden yellow bordered with a rich maroon red. Very early. Bushy plants; excellent for cut flowers or bedding. Pkt. 10c.

DWARF ROYAL SCOT ALL DOUBLE—Color is rich mahogany and gold in uniform stripes; in growth, dwarf and bushy. Pkt. 10c.

ROYAL SCOT—Gold striped maroon. Pkt. 10c.

GOLDEN GEM—Dwarf single orange. Pkt. 10c.

JOSEPHINE—Tall single brown. Pkt. 10c.

LEGION OF HONOR—Dwarf single yellow spotted with velvet crimson. Pkt. 10c.

TALL FRENCH MIXED—Double. Pkt. 10c.

DWARF DOUBLE MIXED—Pkt. 10c.



Marigold, Gigantea Pot O'Gold

NASTURTIUM

Sow in April, thin to 2 or 3 inches.

Dwarf Varieties

DWARF SCARLET EMPEROR—Double blooms, dark foliage, compact plants. Pkt. 15c.

DWARF DOUBLE GEM MIXTURE—The plants are truly dwarf and compact, totally without runners; excellent for borders. Pkt. 10c; oz. 25c.

DWARF DOUBLE GOLDEN GLOBE—Sweet scented flowers. Pkt. 10c; oz. 25c.

KING OF TOM THUMBS—Scarlet, dark leaves. Pkt. 5c.

FINEST MIXED—All colors. Pkt. 5c; oz. 15c; ¼ lb. 40c.

Tall Varieties

DOUBLE ORANGE GLEAM—Deep golden orange sweet scented. Pkt. 10c; oz. 25c.

DOUBLE SCARLET GLEAM—Bright scarlet semi-double, sweet scented. Pkt. 10c; oz. 25c.

DOUBLE GLEAM HYBRIDS—Gorgeously colored, large, sweet scented blooms. Pkt. 10c; oz. 25c.

DOUBLE GOLDEN GLEAM—Large, sweet scented flowers of golden yellow. Pkt. 10c; oz. 25c; ¼ lb. 75c.

CALIFORNIA GIANTS MIXED—All colors. Pkt. 5c; oz. 15c; ¼ lb. 40c.

NEMESIA

LARGE FLOWERING MIXED—Annual suited to cool positions. One foot high with orchid-like flowers in scarlet, rose, blue, orange, etc. Pkt. 10c.

NEMOPHILA

Hardy annual. Easy culture. Useful for borders.

INSIGNIS BLUE (Baby Blue Eyes)—Pkt. 10c.

INSIGNIS MIXED—Mixed colors. Pkt. 10c.

NICOTIANA, FLOWERING TOBACCO

FINEST MIXED—All shades. Pkt. 10c.

NIGELLA

MISS JEKYLL—Splendid cut variety; cornflower-blue flowers. Free flowering annual. Pkt. 10c.

PANSIES

Sow early inside or plant in open in April. Sow in August for spring plants.

BRONZE GIANTS—Burnished brass to gold, wonderfully tinged with various shades. Pkt. 25c.

GRAND DUKE MICHEL—Largest all-white. Pkt. 25c.

IMPROVED SEA BLUE—Best blue. Pkt. 25c.

MADAM STEELE—Giant velvety purple. Pkt. 25c.

Mlle. IRENE—Henna red type, new to pansies. Pkt. 25c.

PANAMA PACIFIC—Huge deep yellow. Pkt. 25c.

***GILL'S MASTER MIXED**—This fine mixture includes all the giant type pansies. Pkt. 25c.

SWISS GIANTS—Wonderful shades. Massive flowers on strong stems. Pkt. 25c.

MIRACLE GIANTS—Selected for giant size, long stems and great range of colors. Pkt. 25c.

GILL'S OREGON GIANTS—A splendid mixture of giant flowers in a good range of colors. Pkt. 15c.

PENTSTEMON

SENSATION—Gloxinia-like flowers on graceful spikes 2 feet high. Includes a wide range of bright colors. Not quite hardy and should be covered in winter. Pkt. 10c.

PHACELIA

CAMPANULARIA—Annual. Suitable for rockeries and edgings. Intense gentian blue with conspicuous white anthers. Pkt. 10c.

PHYSALIS (Chinese Lantern)

Hardy, ornamental perennial with plants 2 feet high producing orange-scarlet, lantern-shaped fruits which can be cut for winter bouquets. Pkt. 10c.



Double Nasturtium, Golden Gleam

PETUNIAS

RADIANCE—New. Rich cerise rose color. Throat golden yellow below where bloom starts to flare. Bears large flowers and blooms very profusely. Pkt. 25c.

CREAM STAR—New. Dwarf bushy habit with soft creamy white blooms. Pkt. 20c.

GLOW—New. Dwarf compact, ball shaped variety. Rich rose-red with lighter throat. Pkt. 15c.

HOLLYWOOD STAR—New. Star shaped blooms of rich rose with amber throat. Pkt. 15c.

SALMON SUPREME—Rich coral-salmon changing to soft salmon pink as they mature. 1 foot high; spreading 1½ feet. Pkt. 20c.

BURGUNDY—Rich wine red with white throat. Pkt. 25c.

FLAMING VELVET—Brilliant mahogany-red with velvety sheen; plants are covered with many large flowers all season. Pkt. 15c.

SINGLE FRINGED DAINTY LADY—Plants are semi-dwarf and free flowering. Medium sized, delicately fringed light golden yellow flowers. Pkt. 25c.

DEFIANCE LARGEST FLOWERING—Flowers often five inches in diameter, fringed, with open throats. Colors varied and indescribable. Pkt. 25c.

DOUBLE GIANTS—Only a portion of these come double, but these are well worth while. Those plants which show the weakest vitality in starting make the best flowers. Pkt. 35c.

PRIDE OF PORTLAND—Giant single; deep rose, very dainty flowers of uniform color. Pkt. 20c.

ELK'S PRIDE—Immense single; black purple, strong, vigorous grower; very popular. Pkt. 20c.

NANA COMPACTA—This miniature petunia, growing about five to six inches high is recommended for borders and rock gardens. PINK GEM, Pkt. 10c. ROSE GEM, Pkt. 10c. MIXED, Pkt. 10c.

BALCONY—MIXED. Pkt. 10c.

Single Bedding Petunias

SILVER BLUE (Heavenly Blue)—Light blue. Pkt. 10c.

ROSE OF HEAVEN—Brilliant rose. Pkt. 10c.

STAR—Cherry-red, white throat. Pkt. 10c.

ROSY MORN—Rose, white throat. Pkt. 10c.

BLOOD RED—Pkt. 10c.

MIXED—Pkt. 10c.

PHLOX DRUMMONDI, Etc.

A beautiful annual that may be used for massing, beds, borders or pots. Sow in open.

GIGANTEA ART SHADES—Very large flowers, lovely pastel shades. Height about 9 inches. Pkt. 10c.

NANA COMPACTA—Dwarf 6". All colors mixed. An ideal border flower. Pkt. 10c.

MAMMOTH FLOWERING—WHITE, ROSE, CRIMSON, PRIMROSE and MIXED. Pkt. 10c.

POPPIES—Single Sorts

Annuals. May be sown in the fall or early spring.

FLANDERS—Bright scarlet. Pkt. 10c.

GILL'S MIXED SHIRLEY—All colors. Pkt. 10c.

Double Sorts

DOUBLE PINK SHIRLEY—Pink shades. Pkt. 10c.

TULIP POPPY—15 to 20 inches high with a blaze of bright scarlet tulip-shaped flowers. Pkt. 10c.

DOUBLE SHIRLEY MIXTURE—All the latest new shades and a wonderful mixture. Pkt. 10c.

CARNATION FLOWERED—Double fringed, mixed colors. Large flowers on tall plants. Pkt. 10c.

ICELAND POPPIES

Perennials. Ideal for border and cut flowers.

THE EMPEROR—Large, tangerine orange. Pkt. 20c.

THE EMPRESS—Large, rich salmon rose. Pkt. 20c.

EL MONTE—Deep orange. Blooms in 6 months from seed. Pkt. 10c.

EXTRA SELECT DOUBLE—Resemble double Ranunculus. A fine range of colors. Pkt. 15c.

SINGLE MIXED. Splendid mixture. Pkt. 10c.

ORIENTAL POPPIES

Hardy perennials, producing splendid cut flowers.

ORIENTAL—Large, orange scarlet, with black blotch on each petal. Pkt. 10c.

PRINCESS VICTORIA LOUISE—Large, soft salmon-rose. Pkt. 15c.

*OREGON SUPREME MIXED—From the finest named sorts of our own growing. Pkt. 15c.

PORTULACA (Sun Plant)

A hardy annual, doing best in a rich loam. Fine for massing in beds, edgings or rock work.

SINGLE MIXED—All colors. Pkt. 10c.

DOUBLE MIXED—Extra select. Pkt. 10c.

PRIMROSE, Hardy

POLYANTHUS—Small, thick round clusters of orange, purple and crimson flowers. Veris Mixed. Pkt. 15c.

JAPONICA (JAPANESE PRIMROSE)—Clusters of bright colors. MIXED. Pkt. 15c.

VULGARIS (ENGLISH PRIMROSE)—Canary yellow, fragrant. Pkt. 15c.

AURICULA MIXED—A favorite variety; 6 inches tall. Yellow, brown, red in mixture. Pkt. 15c.

PYRETHRUM

HYBRIDUM MIXED—Hardy perennial. Large, single, daisy-like flowers in pink, red and white. Pkt. 15c.

DOUBLE MIXED—Hardy perennial. Pkt. 20c.

RUDBECKIA

HIRTA AUTUMN TINTS—Bronzy Autumn shades, petals stand out, do not droop, grow 3 feet in height. Pkt. 15c.

SALPIGLOSSIS

Annual. Plant in open in May.

DWARF GIANT FLOWERING—Averages 18 to 20" in height; compact branching habit. Flowers larger than the regular strain. MIXED. Pkt. 10c.

LARGE FLOWERING—Averaging 2 to 3 feet. VELVET RED, BLACK, SCARLET and GOLD, PURPLE, VIOLET and MIXED. Pkt. 10c.

SANVITALIA (Trailing Zinnia)

Golden yellow with dark purple centers. Blooming from June till frost. Pkt. 10c.

SALVIA (Flowering Sage)

Sow indoors in March, plant out in May.

BONFIRE—Dark green foliaged plants are of erect globular growth and produce scarlet-red flowers most freely. Pkt. 10c.

PATENS—Intense blue. Pkt. 15c.

SPLENDENS—Bright scarlet, 3 feet. Pkt. 10c.

AZUREA—Hardy perennial; skyblue. Pkt. 15c.

SCABIOSA or MOURNING BRIDE

Sow outside after danger of frost is past.

IMPERIAL GIANTS BLUE MOON—Large, double beehive shaped flowers. Deep lavender-blue. 4 feet tall. Excellent cut flowers. Pkt. 10c.

ROSETTE—Extra large flowers, stems are long and stiff. Deep rose suffused salmon. Pkt. 15c.

AZURE FAIRY—Double pale blue. Pkt. 10c.

KING OF THE BLACKS—Reddish black. Pkt. 10c.

LOVELINESS—Soft salmon rose. Pkt. 10c.

PEACH BLOSSOM—Large, soft pink. Pkt. 10c.

SHASTA—Giant, pure white. Pkt. 10c.

GIANT FLOWERED HYBRIDS MIXED. Pkt. 10c.

SOUTH AFRICAN—Perennial. Pink and lavender shades. MIXED. Pkt. 15c.

CAUCASICA LILAC—Hardy perennial; 3 feet. Pkt. 15c.

SCHIZANTHUS

(Butterfly or Fringe Flower)

GIANT FLOWERED HYBRIDS—Quick growing annual, especially good for shade. Fancy Mixed. Pkt. 10c.

SHASTA DAISY

ALASKA—The popular evergreen perennial, with single flowers, often 5 inches across, of purest glistening white. Pkt. 10c.

SNAPDRAGON

For early flowering sow seed in the fall and then set out in the spring, or the plants may be started in the spring, in a box or hot bed.

RUST PROOF MAXIMUM ALASKA—Large pure white. Pkt. 15c.

RUST PROOF MAXIMUM APPLE BLOSSOM—Light rose-pink with white tube. Pkt. 15c.

RUST PROOF MAXIMUM INDIAN SUMMER—Coppery orange scarlet. Pkt. 15c.

RUST PROOF MAXIMUM CAMPFIRE—Bright scarlet with yellow lip. Pkt. 15c.

RUST PROOF MAXIMUM CANARY BIRD—Giant golden yellow. Pkt. 15c.

RUST PROOF MAXIMUM LOVELINESS—Beautiful pure soft rose-pink. Pkt. 15c.

RUST PROOF MAXIMUM SALMON PINK SHADES—All shades of salmon pink. Pkt. 15c.

RUST PROOF MAXIMUM MIXED—Giant flowers, closely set on tall spikes. Pkt. 10c.

STATICE (Everlasting)

ANNUAL MIXED—Easy culture. Pkt. 10c.

PERENNIAL BLUE—12 inches. Pkt. 10c.

PERENNIAL LILAC—30 inches. Pkt. 10c.

STOCKS

Annuals. Easily grown from seed.

GIANT OLD ROSE—Double, non-branching strain; especially good for florists. Height 2-2½ feet. Pkt. 15c.

IMPROVED LARGE FLOWERING TEN WEEKS—Dwarf, compact, branching, fine for bedding. Height 12". MIXED. Pkt. 10c.

DOUBLE EARLY GIANT IMPERIAL

(Imperial Bismark) Height 26 inches

BUTTERCUP—Rich yellow. Pkt. 15c.

ELK'S PRIDE—Royal purple. Pkt. 15c.

GOLDEN ROSE—Light golden rose. Pkt. 15c.

SANTA MARIA—Giant pure white. Pkt. 15c.

GIANT IMPERIAL MIXED—Pkt. 10c.

CUT AND COME AGAIN STOCKS

(Double Perpetual Branching) Height 20 inches.

BRILLIANT—Blood red. Pkt. 15c.

HEATHEN BEAUTY—Golden rose. Pkt. 15c.

SAPPHIRE—Violet. Pkt. 15c.

GIANT PERPETUAL MIXED—Pkt. 10c.

STOKESIA

CYANEA BLUE—Perennial. Valuable cut flower; 2 feet. Pkt. 10c.

STRAWFLOWER

Annual. Many varieties and colors mixed. Pkt. 10c.

SUNFLOWER

CHRYSANTHEMUM—Double, rich golden yellow; immense blooms on strong, tall stalks. Pkt. 10c.

RED—Color varies from yellow to red. Pkt. 10c.

PERENNIAL MIXED—Large, single. Pkt. 10c.

SPENCER SWEET PEAS

WE OFFER THE LARGEST SELECTION OF SWEET PEAS IN THE NORTHWEST

Their easy culture, freedom of bloom, delightful fragrance and artistic appearance, combined with their splendid cut-flower qualities make them one of the most desirable flowers for the public.

Spring sowings should be made as early in the spring as soil conditions permit. Here in the Coast regions they can often be planted in February. They can also be planted in November and with this method they will bloom very early in the spring; in fact, are usually in bloom Decoration Day.

NOVELTY FOR 1941

QUEEN WILHELMINA—New. Soft, rose-pink on cream. Flowers large and attractively waved. Pkt. 25c.

1940 NOVELTIES

QUINTUPLETS (Multiflora)—Five large blooms to a stem. American Beauty rose. Pkt. 20c.

RED SUPREME—Bright red. Pkt. 20c.

GIANT FLOWERING SPENCER

PRICES—Unless noted are uniformly: Pkt. 10c; oz. 30c; $\frac{1}{2}$ lb. 90c; lb. \$3.00.

ABUNDANCE (Multiflora)—Large orchid.

AVALANCHE—Giant white.

BONNY BRIAR—Large rose pink.

BOUNTIFUL (Multiflora)—Rich blue.

BRIDAL VEIL—Pure white.

CAMPFIRE—Bright sunproof scarlet.

CHEERI-O—Begonia rose suffused with gold.

CHIEFTAIN—Large, pure, satiny mauve.

DISCOVERY—Brilliant chamois pink.

ECSTASY—Blush pink.

FLAMINGO—Orange, scarlet, cerise. Extra fine.

FLORADALE PURPLE—Giant rich purple.

GLENEAGLES—Immense pale blue lavender.

GRANDEUR—Shell pink on white ground.

HAWLMARK PINK—Giant rose, flushed salmon.

HEAVENLY BLUE—Immense delphinium blue.

HONOUR—Deep crimson.

IDYL—Giant flowers in fours; salmon pink.

LADY MACBETH—Dazzling red.

LIFE—Scarlet cerise. Does not fade.

MARY PICKFORD—Cream pink suffused salmon.

MASTERCREAM—Large black seeded cream.

MISS CALIFORNIA—Giant salmon pink.

PEER—Orange pink on cream ground.

PINKIE—Giant in fours; deep rose pink.

POWERSCOURT—Mammoth, pure lavender.

PROLIFIC (Multiflora)—Warm rose-pink.

SUNKIST—Giant cream; picotee edge of rose.

YARBIL HENSHAW—Giant deep crimson.

THE SULTAN—Large, black, velvety maroon.

VANITY—Beautiful geranium pink.

WELCOME—Brilliant scarlet. Extra fine.

GIANT RUFFLED SPENCER

Flowers are duplexed, heavily ruffled and frilled.

PRICES—Unless noted are uniformly: Pkt. 10c; $\frac{1}{2}$ oz. 20c; oz. 35c; $\frac{1}{2}$ lb. \$1.00.

RUFFLED GLAMOUR GIRL—New. Light fawn-pink. Entirely sunproof. Pkt. 20c.

RUFFLED BLUE—Large clear blue.

RUFFLED BONNIE RUFFLES—Salmon pink on cream.

RUFFLED CARMINE—Carmine rose.

RUFFLED CRIMSON—Rich crimson.

RUFFLED EXQUISITE—Salmon-cerise with four large flowers on long strong stems.

RUFFLED ORCHID—Soft orchid shade.

RUFFLED PINK—Deep rose-pink on cream becoming lighter toward the base.

RUFFLED PURPLE—Rich purple.

RUFFLED ROYAL RUFFLES—Scarlet-cerise.

RUFFLED SPARKLE—Glowing cerise.

RUFFLED MIXED—This mixture contains the above named varieties and many others.

SPRING FLOWERING SPENCER

Extremely hardy, productive, and more heat resistant than other Sweet Peas. Blooms a few days before the standard varieties.

ROSE PINK—New. Clear shade. Pkt. 20c.

BLUE—New. Clear, marine blue. Pkt. 20c.

LAVENDER—New. Clear, soft lavender. Pkt. 20c.



Sweet Pea (Multiflora), Bountiful

EARLY FLOWERING SPENCER

These bloom two weeks ahead of the regular Spencer. Valuable for greenhouse forcing.

PRICES—Unless noted are uniformly: Pkt. 10c; $\frac{1}{2}$ oz. 25c; oz. 45c.

HELEN HAYES—New. Bright coral with orange suffusion. Pkt. 25c.

PEARL BUCK—New. Warm rose faintly suffused orange. Pkt. 20c.

ALL WHITE—Large pure white.

DAPHNE—Soft salmon-pink on cream ground.

DELICIOUS—Crushed strawberry.

ELEANOR BLUE—Clear blue.

FASCINATION—Salmon rose pink.

IRIS BLUE—Deep Iris blue.

LAVANDA—Giant lavender.

MOTHER MACHREE—Coral and golden rose.

ORIENTAL—Large rich cream.

ROSE PICOTEE—Pure white with salmon rose edge.

TITANIA—Mammoth deep rose.

TREASURE ISLAND—Sparkling golden orange.

SHIRLEY TEMPLE—Beautiful soft rose pink.

SUNPROOF ORANGE—Bright scarlet orange.

SUSANNA—Deep crimson.

TOP HAT—Large blooms of deep velvety violet.

EARLY SUPER MIXED—A very fine mixture. Pkt. 10c; $\frac{1}{2}$ oz. 20c; oz. 30c; $\frac{1}{2}$ lb. 90c; lb. \$3.25.

MIXED SWEET PEAS

***SHOW GROUND MIXTURE**—A remarkable mixture saved from trial grounds, being made up from a long list of new and standard named Spencer varieties. Pkt. 10c; oz. 35c; $\frac{1}{2}$ lb. \$1.00; lb. \$3.50.

GILL'S PROGRESSIVE MIXTURE—This Spencer mixture contains a splendid assortment of colors both light and heavy shades, and gives fine satisfaction. Pkt. 10c; oz. 20c; $\frac{1}{2}$ lb. 65c; lb. \$2.00.

CUPID (Dwarf)—Useful for borders and edging. Pkt. 10c; oz. 35c.

SWEET ROCKET

Hardy perennial of easiest culture; 3 feet tall; fragrant spikes of blooms in May; valuable for cutting. **WHITE, CARMINE and MIXED.** Pkt. 10c.

SWEET WILLIAM

Hardy biennial, easily grown from seed.
NEWPORT PINK—Salmon rose. Pkt. 10c.
SCARLET BEAUTY—Large clusters of deep scarlet. Very popular. Pkt. 10c.
JOHNSON'S DIADEM—Giant blooms in immense clusters; deep crimson with white eye. Pkt. 10c.
NEW MAMMOTH MIXED—Gigantic strain. Single flowers in a great range of color. Pkt. 10c.
DOUBLE MIXED—Extra select strain. Pkt. 15c.

THALICTRUM (Meadow Rue)

DIPTEROCARPUM—Perennial lilac-mauve flowers with conspicuous yellow anthers. Height 4 feet. Pkt. 10c.

THUNBERGIA, BLACK EYED SUSAN

Rapid growing annual climber, preferring a warm situation; useful for hanging baskets, vases, along fences, etc. Buff, white, orange, etc., with dark eyes; 5 feet. **MIXED colors.** Pkt. 10c; $\frac{1}{2}$ oz. 50c.

TITHONIA (Mexican Sunflower)

SPECIOSA—Single brilliant orange flowers. Usually grown as an annual. 6 feet. Pkt. 10c.

TRITOMA (Red Hot Poker)

Hardy perennial, easily grown from seed. Height 4 to 5 feet. Brilliant red. Pkt. 15c.

TUNICA

SAXIFRAGA—Perennial. A pretty tufted plant with light rose flowers. Useful either for the rockery or the border. Pkt. 10c.

VENIDIUM

FASTUOSUS HYBRIDS—Daisy-like flowers varying in many shades of salmon, apricot, yellow, orange and white. Start the seed in March. Plant in a sunny location. 2 to 3 feet high. **Mixed.** Pkt. 25c.

VINCA

Ornamental free flowering plants; fine for bedding. Sow outdoors in May. **MIXED.** Pkt. 10c.

ZINNIAS

These old-fashioned flowers have been highly improved and the new giant sorts are deservedly very popular. Blooms 5 to 6 inches in diameter are very common. The best results can be obtained by planting the seed where you wish them to grow. This is far better than transplanting, except for early blooms. Plant in open ground May 1 to June 15.

BLACK RUBY—New. Lilliput type. Rich blackish maroon, petals are of a velvety texture. Pkt 25c.

FANTASY WILDFIRE—New. Dazzling scarlet. A vivid companion to the rest of the Fantasy type. Pkt. 15c.

FANTASY WHITE LIGHT—Medium-sized, shaggy petals. Pkt. 10c.

FANTASY STAR DUST—Rich golden yellow. Pkt. 10c.

FANTASY MIXED—Bright, colorful mixture of shaggy petaled medium sized double flowers; excellent for cutting. Pkt. 10c.

GALLARDIA FLOWERED MIXED (Navajo)—Most of the flowers are two toned with a ring of deeper color in the center of the flower. Pkt. 10c.

LINEARIS—Single, orange flowers with yellow stripe and dark center. Dwarf plants. Pkt. 10c.

SCABIOUS FLOWERED MIXED—Medium-sized flowers, resembling the annual Scabiosa. Pkt. 10c.

QUILLED TYPE MIXED—Giant type with long rolled or quilled petals. Pkt. 10c; $\frac{1}{2}$ oz. 30c.

FLOWER SEEDS FOR FLORISTS

We supply hundreds of florists with bulk weights in flower seeds. Please write.

VERBENAS

LUCIFER—Giant, rich scarlet. Pkt. 10c.
LAVENDER GLORY—Lavender colored vervena of mammoth size. Medium white eye. Pkt. 15c.
MAMMOTH STRAIN, in **PINK, PURPLE, SCARLET, WHITE, BLUE and MIXED.** Pkt. 10c.

NANA ERECTA

This new type of vervena is excellent for borders or bedding. Grows more upright than the old type.
VENUS—Soft chamois-pink; inner florets suffused copper. Pkt. 20c.
CARMINE BALL—Bright carmine. Pkt. 20c.

VIOLA CORNUTA (Tufted Pansies)

JERSEY GEM—The best deep violet blue. Pkt. 25c.
LUTEA SPLENDENS—Chrome-yellow. Pkt. 10c.
CHANTREYLAND—Best pure apricot. Pkt. 15c.
TUFTED PANSIES MIXED—Pkt. 10c.

VIRGINIA STOCK

Annual. Producing small red, rose and white flowers. Plants 6 to 8 inches tall. Excellent for border. **MIXED.** Pkt. 10c.

VISCARIA

Very showy and effective garden annual, producing freely throughout the summer. Small single flowers in red, white and blue shades. Pkt. 10c.

WALLFLOWER

Half hardy perennial, blooming early in the spring. Easily grown from seed.

MAMMOTH DOUBLE MIXED—Giant flowers. A large percentage come double. Pkt. 15c.

PERENNIAL SINGLE MIXED—Many colors. Pkt. 10c.

DOUBLE EARLY WONDER MIXED—Annual. Blooms in 90 days. Pkt. 10c.

SINGLE ANNUAL MIXED—Pkt. 10c.

SIBERIAN—Hardy biennial. Grows 12 inches high with bright orange flowers. Pkt. 10c.

WILD FLOWER GARDEN

This is a mixture of many kinds of annual flower seeds and will give splendid results on banks and along roadsides, etc. Large Pkt. 10c; oz. 35c; $\frac{1}{2}$ lb. \$1.00.

SEMESAN

A highly valuable seed disinfectant, also aiding germination. See page 16.



Zinnia, Fantasy Wildfire

(Zinnias—Continued)

BEDDING ZINNIAS

HAAGEANA DOUBLE HYBRIDS—Small Mexican type Zinnias; excellent for bedding. This mixture contains many attractive colors. Pkt. 10c.

EARLY WONDER—Dwarf early flowering Zinnia producing masses of Pomula type flowers on long nearly leafless stems. MIXED. Pkt. 10c.

LILLIPUT TOM THUMB—This mixture is the most dwarf Zinnia known. Fine for borders. Pkt. 10c.

LILLIPUT DOUBLE—Miniature flowers about the size of a common daisy; excellent for borders. Canary Yellow, Crimson Gem, Golden Gem, Lilac Gem, Rosebud, Salmon Rose, White Gem and Mixed. Pkt. 10c; ¼ oz. 35c; oz. \$1.00.

MONSTER TYPE ZINNIAS

This type offers some very rare and striking colors.

PRICES—Unless noted are uniformly: Pkt. 10c; ¼ oz. 35c.

- CERISE QUEEN**—Beautiful cerise rose.
- DAFFODIL IMPROVED**—Canary yellow.
- GOLDEN QUEEN**—Golden yellow.
- GRENADIER**—Bright, dark red.
- MISS WILMOTT**—Giant, soft pink.
- ORANGE KING**—Color of Orange King Calendula
- PURITY**—Giant pure white.
- ROSE QUEEN**—Opens bright rose with deeper center but develops into a warm, deep rose.
- MONSTER MIXED**—All shades mixed. ¼ oz. 25c.

MAMMOTH DAHLIA FLOWERED

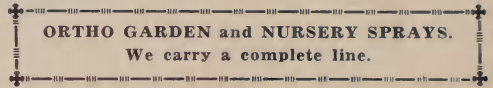
Greatly improved double Zinnias of gigantic size and remarkable colorings.

PRICES—Unless noted are uniformly: Pkt. 10c; ¼ oz. 35c.

- CANARY BIRD**—Rich canary yellow.
- CRIMSON MONARCH**—Largest and best red shade; often 8 inches across.
- DREAM**—Deep lavender turning to mellow purple.
- ELDORADO**—Large salmon apricot.
- EXQUISITE**—Light rose with deep rose center.
- METEOR**—Rich, glowing, deep red. Very dark.
- OLD GOLD**—Mammoth old gold.
- OLD ROSE**—Real old rose shade.
- ORIOLE**—Beautiful orange and gold bicolor.
- POLAR BEAR**—Large creamy white.
- SCARLET FLAME**—Large, bright scarlet with blending of orange throughout the petals.
- MAMMOTH DAHLIA MIXED**—A fine blending of colors. Pkt. 10c; ¼ oz. 25c; ½ oz. 75c.

NURSERY LABELS

We offer copper wired labels, painted white on one side. Just right for tagging bulbs, shrubs, etc., at 50c per 100; \$3.25 for 1000, postpaid.



GILL BROS. BLUE RIBBON DAHLIAS

At our farms, we grew, last season, ten acres in Dahlias, representing about six hundred varieties. Our selections have not been limited to Oregon or the Northwest. We have disregarded geographical lines and have assembled the best from all the dahlia growing sections in the world. We ship dahlias all over the United States and Canada and have won a reputation for good dahlia bulbs that are true to name. Our soil produces solid, vigorous bulbs, that give splendid results in any section of the country. Practically all bulbs we send out are our own growing. It will pay you, in the purchase of dahlias, to buy direct from a grower who can supply his own stock as this lessens the chance of mistakes.

OUR WARRANTY

See page 1. In case of dahlias not growing, they must be returned to us by July 1, of the season when purchased, with our labels attached. Sometimes bulbs are slow to sprout, but if at the end of 20 days they have not done so, remove the earth carefully from the bulb and, if still dormant, return it to us. We can send you another at once. However, if it reaches us too late for planting that season, we will book the order for filling the season following. Flowers considered untrue to name should be sent to us by parcel post for verification. Any extras we may include free in orders are not subject to Our Warranty.

DAHLIA ORDERS

Will be filled during April and May, but may be sent to us any time for booking, and will be filled in the rotation received. No dahlia orders will be filled after June 1, except collections, which will be sent up to June 15 if stock is unsold. Orders for dahlias of \$10.00 or more (collections not included) may select 10 per cent of the amount, extra in dahlias as a premium. ALL DAHLIA PRICES POSTPAID.



Pompon Dahlia, Mike

DAHLIA CULTURE

We publish a bulletin telling how to care for dahlias. This is sent free to all if requested and a copy is included with each order of bulbs.

Gill's Peony Flowered Dahlias

- BLOSSOM**—Ivory white on long, erect stems. Fine cut flower..... .35
- *CITY OF PORTLAND (Gill)**—Giant canary yellow on long, erect stems. One of the finest..... .35
- *DR. GEORGE SKINNER**—Large flowers on fine stems; deep red heavily tipped white..... .35
- *GOLD BAND (Gill)**—Brilliant scarlet and gold, many of the petals have a gold stripe in center..... .35
- *MRS. IRENE TAFF (Gill)**—Rich wine red, toned yellow deepening to golden zone at center..... .35
- *MRS. JULIUS MEIER (Gill)**—Centers deep yellow with major part of the petals rich deep salmon..... .35
- *SUPREME (Gill)**—Giant blooms on long, erect stems. Clear lavender pink..... .35
- THE ORIOLE**—A giant; a striking combination of burnt orange, red and yellow, often tipped white..... .35

Gill's Cactus and Semi-Cactus Dahlias

EXPLANATION—S. C. indicates Semi-Cactus; these have broader and more massive petals. Varieties indicated with a star are Pacific Northwest introductions. We can supply many other sorts. If interested, please write. Those marked (Gill) were introduced by Gill Bros.

ALPHONSINE—A splendid white cactus. Erect stems. Perfect incurved flowers.	.50
AMBASSADOR, S. C.—Giant, soft bright yellow, deepening to orange center; strong, erect stems.	.35
AMELIA EARHART, S. C.—Apricot buff, with primrose at base of petals. Large flower, good stems	.75
AMERICAN TRIUMPH—Large red true cactus	.35
ANDREAS HOFER—Beautiful pink, on good stems	.35
*AUNT PITTY PAT, S. C.—Yellow, shading to pink	2.00
BALLET GIRL—Immense, incurved flowers on good stems. Orange petals tipped white	.35
*BONNEVILLE, S. C. (Gill)—Very large blooms of ivory white with yellow shadings. Excellent stems	.75
*BURNT ORANGE, S. C.—An improved U. S. A.	.35
*CAMPFIRE GLOW (Gill)—Large blooms, fully double on erect stems. Bright crimson self.	.35
CHEMAR'S MASTERPIECE, S. C.—Giant flowers on good stems; rich orchid pink	.35
CIGARETTE, S. C.—Giant on strong stems; cream ground edged with pomegranate red.	.50
*COLUMBINE (Gill)—Soft columbine shades of lavender, rose and yellow. Long, erect stems.	.35
CONQUISTADOR, S. C.—Giant, massive flower. Creamy yellow shading to pink at base	.75
CONSERVATRIX—(Foreign), cardinal-red, large blooms on long and strong stems	.35
*CROWN POINT (Gill)—Giant lavender blooms. Tall, vigorous plants	.50
DR. CURTIS HOLCOMBE, S. C.—Clear lemon yellow with apricot tints on outer petals.	.75
*DR. RICHARD BURKE, S. C.—Orange, with good stems	2.00
DR. J. SCHEINER, S. C.—Large smoky lavender. Excellent stems	.50
EASTLAND SUNBEAM, S. C.—Deep cinnamon red	.50
EDITH WHITAKER, S. C.—Rich dark velvety crimson with maroon shadings.	.35
EDNA FERBER, S. C.—Coral shading to gold, glistens with golden sheen	.50
ELITE GEM, S. C.—Lemon on chrome, suffused and shaded tyrian rose, with rose reverse.	.35
*ENCHANTING, S. C. (Gill)—Giant flowers of rich rose salmon with large golden centers.	.35
FAITH NEWMAN—Incurved yellow with white reverse	.35
*FASCINATION, S. C. (Gill)—Giant flowers on long stems; deep purple, regularly tipped white	.50
GOLDEN STANDARD—Golden tan, blushed with tints of amber and bronze.	.50
GOLDEN WEST, S. C.—Large flower on erect stems; deep rich yellow overlaid with orange.	.35
GOOD WILL, S. C.—Beautiful pink with a blending of cream and yellow at center	.35
IRENE ANDERSON, S. C.—Immense blooms of purplish cerise, heavily tipped white	.50
JEAN CHAZOT, S. C.—Giant flowers on long stems; golden bronze lightly suffused with soft red	.35
JEAN TRIMBEE, S. C.—Giant flowers of rich purple, extra fine stems	.50
JERSEY DAINTY—Pure white lightly tinged with lavender. Free blooming	.50
JOSEPHINE G., S. C.—True rose pink, with some petals tipped gold. Excellent cut flower.	.35
KATHLEEN V. SMITH—Lovely pure pink with lighter center	.50
LAURINE—Giant flowers of deep pink; long, erect stems.	.35
*LILLIAN SHERIDAN, S. C.—Orange shaded aurora yellow; petals tipped with gold. Erect stems	.35
MARIAN BROOMALL, S. C.—Very large lavender pink with pure white center	.50
MARYLAND ORANGE, S. C.—Orange and red flowers with orange predominating	.35
*MELONEY—Pure white cactus of fine form. Long stems	2.00
MISS ELSIE JANE, S. C.—Shrimp pink with cream shadings at center and tipped violet rose.	.50
MISS TOLMIE—Large, pure mauve. Perfect stems	.35
MRS. ETHEL SMITH, S. C.—Giant creamy white shading to lemon. Long, erect stems	.35
NANKING YELLOW, S. C.—Light creamy yellow. Free blooming	.50
NELLIE RAY—Beautiful soft lavender. Good stems and valuable cut flower.	.50
NEW GLORY, S. C.—Large, garnet red, each petal tipped white.	.50
NOCTURNO—Dark velvety garnet, overcast with black. Unusually rich color. Strong stems	.50
NOPAL, S. C.—Large, beautiful, rich, velvety red with perfect stems	.50
*OREGON (Gill)—Large flower of distinct color. Brilliant rose carmine cerise. Fine cut flower	.35
ORIENTAL BEAUTY—Blooms are large, clear bright rose pink. Perfect stems	.50
PALO ALTO, S. C.—Clear, rich salmon, shading to gold at center	.50
PURPLE GLORY—Striking flowers of light purple, penciled with black	.50
ROMANY—Large flowers of bright geranium scarlet; long rolled petals	.35
RONDO—Very large, light lemon yellow. Splendid stems	.35
ROGUE BOQUET—Blended shades of orange-red with tints of purple. Good stems	.50
ROSA BONHUEB, S. C.—Ivory white center shading to shell pink; splendid stems	.50
ROYAL VELVET, S. C.—Large deep red, good stems	.50
SATAN, S. C.—Large blooms of flaming red with a touch of gold at base	.50
SCHWERIN'S WAHL, S. C.—Sulphur yellow, reverse red	.35
STAR OF BETHLEHEM, S. C.—Huge pure white with pointed center resembling a star	.35
THE QUEEN, S. C.—Large blooms of deep Oriental pink, fine for cutting	.50
*T. P. CRAMER (Gill)—Rich coral rose with a touch of yellow at base of petals	.50
*WAVE CREST, S. C. (Gill) (See front cover)—Giant blooms with sulphur yellow base. Petals heavily suffused and pitted with pink	.50
WM. H. WAITE, S. C.—Shell pink	.75

Gill's Star Dahlias

*AUTUMN STAR (Gill)—Bright autumn shades of gold and bronze; petals shading lighter at tips	.25
*BABY BUTTERCUP (Gill)—Small sulphur yellow flowers, popular for florist trade. It averages about one inch in diameter. Something new and distinct in dahlias.	.35
*GARNET STAR (Gill)—Deep garnet red. A splendid cut flower	.35
*GILL'S CERISE STAR (Gill)—Long, erect stems. Ideal for cutting	.25
*SYLVIA STAR (Gill)—Soft silvery pink. Cactus petals. Long, erect stems.	.35
WHITE STAR—White with orange pollen center. Long, erect stems. Ideal for cutting	.35

Gill's Decorative Dahlias

Abbreviations—F. D., Formal Decorative. I. D., Informal Decorative.

AIR MAIL, I. D.—Light lavender blooms, held erect on long, stiff stems.....	.50
AL KORAN, F. D.—Giant, goldenrod yellow suffused amber on older petals. Long, erect stems.....	.35
AMUN RA, F. D.—Gigantic flowers on long stems; copper and orange with gold and reddish bronze.....	.35
ANDREA ERICKSON, I. D.—Pure white of immense size, and beautiful formation.....	.50
ANNA BENEDICT, I. D.—A dark rich velvety carmine almost black center.....	.50
ARTURUS, F. D.—Large scarlet red suffused deep yellow, with yellow reverse.....	.50
AVONELLA, F. D.—Amaranth purple. Large flowers.....	.35
AZTEC GLORY, I. D.—An immense, shaggy, pure golden yellow. Dwarf grower.....	.50
BALLEGO'S GLORY, F. D.—Holland dahlia. Rich maroon, edged with gold.....	.75
BLACK JACK, F. D.—Giant blooms on long, erect stems; deep blackish maroon.....	.50
BLUE RIVER, F. D.—As near blue as you will find in a dahlia. Good stems and a prolific bloomer.....	.50
BOB BARKER, F. D.—Bright rose pink, with gold base. Long, erect stems.....	.35
*BRILLIANT, F. D. (Gill)—Intense fiery scarlet on long, erect stems. A fine cut flower.....	.25
BUCKEYE BRIDE, F. D.—Geranium pink, very delicate shade, excellent cut flower.....	.50
BUCKEYE KING, F. D.—Glowing amber. Prolific bloomer and good stems.....	.50
CALIFORNIA IDOL, I. D.—Clear, glistening yellow. Immense size.....	.75
CALIFORNIA ROSE, I. D.—Deep rose pink, centers high and full. An honor roll dahlia.....	.50
CAPRICE, I. D.—Golden yellow. A gold medal winner.....	.50
CARMEN, F. D.—Extra large, good, salmon-pink.....	.50
CARMENCITA, I. D.—Large yellow, beautifully striped with red. Good stems.....	.50
CHAMPOEG, F. D.—Waxy canary yellow at the center, shading to bright peach red toward the outer edges of the petals. Stems are very stiff.....	.50
CHAS. G. REED, F. D.—Rich reddish purple. Free blooming.....	.50
CLARA CARDER, F. D.—A New Zealand dahlia. Large, cyclamen pink.....	.75
CONGRESSMAN WOLVERTON, I. D.—Bright salmon pink, fine stems.....	.35
CORNELIA B. PINCHOT, I. D.—Glowing, burgundy red.....	.75
DAD, I. D.—Large, brilliant red flowers, with good stems.....	.35
DIXIE RAVENSCROFT, I. D.—Bright flame color with gold reverse.....	.35
DOROTHY STONE, F. D.—Giant flowers of a deep rose pink. Good stems.....	.35
DWIGHT W. MORROW, F. D.—Large deep red; one of the best.....	.50
EAGLE ROCK BEAUTY, I. D.—Pink with cream center. A very good flower and very popular.....	.35
EAGLE ROCK FANTASY, I. D.—Beautiful pink of immense size with good stems. A prize winner.....	.50
EARL WILLIAMS, F. D.—Immense scarlet, tipped white. Strong, erect stems.....	.50
ELINOR M. RADELL, I. D.—Beautiful violet rose, darker reverse with gold at base of petals.....	.50
FOREST FIRE, I. D.—Brilliant flame, with gold shadings. Very striking.....	.75
FORT MONMOUTH, I. D.—Large, rich crimson maroon shaded to bluish violet at tips of petals.....	.50
FRANK MILLER, F. D.—Pieric yellow growing to a large size on long, straight stems.....	.35
FRANK SERPA, I. D.—Pale pink, shaded rose at edges of petals. Long stems.....	.75
FREDA GEORGE, I. D.—Cream pink, overlaid with heliotrope.....	2.00
FULL MOON, F. D.—Huge, golden yellow.....	.50
GALLI CURCI, I. D.—Large, salmon-orange. Good stems.....	.35
GIRL OF HILLCREST, F. D.—Bright, mikado orange. One of the best of its color. Strong grower.....	.50
GRACE CURLING, I. D.—Lilac with a pink tint, shading to white at base.....	.35
HARRIET THOMPSON, I. D.—Orange buff and bronze, with reverse Oriental red.....	.35
H. C. DRESSELHUYNS, F. D.—Soft pink with lighter shading. Good cut flower.....	.35
HEBA, F. D.—Orchid lilac on splendid stems.....	.35
HONOR BRIGHT, F. D.—Pure bright bronze, turning clear soft orange as season advances.....	.50
HORACE ADAMS, I. D.—Large shaggy blooms of orange suffused with yellow.....	.50
HUBERT ROY STOVEL, I. D.—Immense, rich, golden yellow; long wavy petals.....	.35
*IMPROVED CLOWN, F. D. (Gill)—Creamy yellow ground splashed and striped with crimson.....	.50
*INDIAN SUMMER, F. D. (Gill)—Soft salmon with gold suffusion and silvery sheen; long stems.....	.50
JANE COWL, I. D.—Giant, bronzy buff and old gold, blending deeper to a perfect center.....	.35
JANE ROSS, I. D.—Purplish crimson shaded with purple, having a velvety maroon sheen.....	.50
JERSEY BEACON, F. D.—Gigantic blooms on strong stems; Chinese scarlet with lighter reverse.....	.35
JERSEY BEAUTY, F. D.—A giant on long, erect stems; beautiful shade called eosine pink.....	.35
J. K. ALEXANDER, JR., I. D.—Immense crimson red, yellow fleck in center. Free flowering.....	.50
KEMP'S VIOLET WONDER, F. D.—Dark rich violet flowers on long stems.....	.50
KING MIDAS, I. D.—Pure golden yellow; erect stems.....	.50
KING OF THE GARDEN, I. D.—Large, bright canary yellow flushed with soft orange red. Good stems.....	1.00
LADY MOYRA PONSONBY, I. D.—Pure golden yellow with long broad petals.....	.75
LA DOSKA DOWD, F. D.—Large blooms on good stems; clear yellow.....	.35
LA ESTRELLA, F. D.—Deep burnt orange. Long, erect stems.....	.35
LA VANDER BRIDE, F. D.—Large lavender with bluish sheen. One of the best lavender.....	.50
LORELI, F. D.—Pure rose pink, on long strong stems. Free flowering.....	.50
*MARCELLA GILL, F. D. (Gill)—Extra early, and the best cut flower dahlia we have seen. Long, wiry, erect stems with delightful shell pink flowers. Dozen \$2.00.....	.25
MARGRACE, I. D.—Bright cardinal with tan reverse. Excellent stems.....	.75
MARJORIE BEEVOR, I. D.—Beautiful orchid flower, with excellent stems.....	.35
MARJORIE COLE, I. D.—Good bi-color; orange-yellow, tipped white. Free blooming.....	.35
*MARMION, I. D.—Gigantic full flowers on good stems; golden yellow tinted bronze.....	.35
MARSHALL'S PINK, F. D.—Beautiful shrimp pink. Jersey Beauty form. Fine for cutting.....	.35
MARY ELLEN, F. D.—Violet rose, with considerably more pink than lavender.....	.35
MARYLAND GLORY, F. D.—A large deep American Beauty red; strong erect stems.....	.50
MARYLAND JUBILEE, F. D.—Glorious rich rose red.....	.50
META SCAMMELL, F. D.—Center pale amaranth pink shading to deeper pink at tips; long stems.....	.35
MISS ANNIE LYLE, I. D.—Orchid pink with slender petals that wave and curl.....	.50
MISSION BELLE, F. D.—Immense blooms of old rose and pale lavender. Long, erect stems.....	.35
*MISS PORTLAND, F. D. (Gill)—Beautiful, large watermelon pink flowers on excellent stems.....	.50
MONMOUTH CHAMPION, F. D.—Immense bright orange-scarlet blooms. Flowers very freely.....	.35
MONMOUTH GIANT, I. D.—Clear sparkling orchid, up to 12 inches in size.....	.50
*MONTANA BEAUTY, I. D. (Gill)—Petals yellow, suffused with violet and rose, giving a tan effect.....	.50

MRS. CROWLEY, F. D.—Exquisite salmon pink. Distinct colored flowers on good stems	35
MRS. ALFRED B. SEAL, I. D.—Very large, pure glowing rose. Good stems	35
MRS. CARL SALBACH, F. D.—Extra long, strong stems carry giant flowers of mauve pink	35
MRS. EDNA B. CHAMPLIN, F. D.—Deep rhodamine pink, very large	50
MRS. GEO. LE BOUTILLIER, I. D.—Rich velvety carmine. Immense blooms, strong stems	50
MRS. GEO. SKEEN, F. D.—One of the best rose colored dahlias. Blooms are large on perfect stems	35
MRS. J. K. ALEXANDER, F. D.—Large, clear buttercup-yellow	50
MRS. I. DE VER WARNER, F. D.—Large flowers on long, stiff stems; deep mauve pink or orchid color	35
MRS. WARREN DEE MILLAR, F. D.—Giant white flowers, shading to flesh pink, on good stems	35
MYRA HOWARD, I. D.—Glowing combination of saffron, yellow and tints of salmon in center	35
NAGEL'S TRIUMPH, I. D.—Brilliant carmine rose with golden yellow base. Good cut flower	50
NANCY ROBINSON, I. D.—Exquisite true pink blooms of unique form. Excellent cut flower	50
*OREGON SUNSHINE, F. D.—Giant, rich golden yellow. Long, erect stems	35
PATRICIA WEYMAN, F. D.—White with a soft lavender veining in each petal	50
*PEACH GLOW, F. D. (Gill)—Large flowers on long, erect stems. Beautiful watermelon pink	35
PRES. FRANKLIN D. ROOSEVELT, F. D.—Chinese red with cream reverse	50
PRIDE OF CALIFORNIA, F. D.—Giant on long, strong stems; color, deep rich crimson	35
PRIDE OF SAN FRANCISCO, F. D.—Giant blooms on stout stems; brilliant, golden salmon pink	50
PRIMULA REX, I. D.—Color is light cream or primrose yellow. Stems are strong and erect	35
RADIO, I. D.—Giant flowers on erect stems. Blood red edged and tipped with gold	50
RIPPLES, I. D.—Large flower of rose pink, held on very long stems	35
RISING SUN, F. D.—Yellow shaded and suffused with fiery red. Strong and erect stems	50
RORY O'MOORE, F. D.—Deep maroon with petals tipped white. Stiff stems	35
*SAFRANO, F. D. (Gill)—Yellow at base, heavily overlaid with scarlet. Reverse saffron yellow	50
SALBACH'S WHITE, F. D.—Pure white. Good cut flower	35
SALLY B, F. D.—Large, pure, bright pink. Stems strong and erect	50
SARAH JANE, I. D.—A clear yellow. Flowers are very large and beautiful	50
*SEASIDE BEAUTY, F. D. (Gill)—Giant blooms of rich, ruby red; tips of outside petals turning to dove color as flowers age. Ideal cut flower	50
SHAHARAZAD, I. D.—Large blooms of deep rose pink, with erect stems	50
SONNY BOY, I. D.—Large, old rose slightly striped and tinged old gold	35
*SPARKLES, F. D. (Gill)—Large blooms of deep bright scarlet with petals evenly and distinctly tipped white. Fine stems and an excellent cut flower	75
SPOTLIGHT, I. D.—Large, clear sulphur yellow. Petals curl and twist in a fascinating manner	50
*SUMMER GIRL, F. D. (Gill)—Large blooms of light lemon yellow. Stiff stems; dwarf plants	35
SUPREME MONARCH, I. D.—Very large, deep brilliant red, reverse pearly white	35
*TACOMA BEAUTY, F. D.—Large, salmon pink	50
THE COMMODORE, I. D.—One of the largest and most spectacular of the yellows	50
THE FIREMAN, I. D.—Spectrum-red with occasional stripes and tips of mustard yellow	50
THOS. A. EDISON, F. D.—Royal purple. Flowers are carried on excellent stems	50
TOMMY ATKINS, I. D.—A giant flower of lustrous flaming scarlet on long, erect stems	35
TREASURE ISLAND, F. D.—Gold with apricot and rose suffusion; good stems	35
UNCLE TOM, F. D.—Giant flower of dark velvety garnet heavily toned black. Good, erect stems	35
VALENTINO, F. D.—Beautiful salmon pink, shading to cream at center. One of the best	35
WALDHEIM SUNSHINE, I. D.—Giant blooms of deep yellow. Long, wavy petals; erect stems	35
WASHINGTON GIANT, I. D.—Orchid pink and lavender with a blend of white at center. Good stems	75
WENOKA, F. D.—Massive, rosy mauve with magenta shadings	1.00
WHITE KNIGHT, F. D.—Pure, snow white of large exhibition size. Free blooming	50
WHITE WONDER, I. D.—Large pure white. Lovely form, wavy petals, splendid stems	50

Gil's Collarette Dahlias

ARIA—Soft rose, zoned white in center; white collar	25
GEANTE DE LYON—Large flowers; deep garnet crimson with golden collar. Extra fine	35
MT. LASSEN—Fiery red with yellow collar; free flowering; long, erect stems	35
SONATE—Starry flowers on good stems; light orange red; yellow collar	35
SWALLOW—Beautiful pure white collarette; long, erect stems; fine for cutting	25

Gil's Single Dahlias

*AFTERGLOW (Gill)—Soft yellow ground suffused and tipped with salmon pink. Good stems	35
AMI BARILLET—Purplish black foliage; small, rich, garnet flowers on good stems	25
*BRIGHTNESS (Gill)—Giant golden yellow tipped and toned with crimson; long, erect stems	25
CHARITY MALONE—Flame-red with gold tips	35
CLIFTON—Medium flowers of rich purple with red halo around the golden pollen center	25
*FIERY GEM (Gill)—A mass of brilliant fiery scarlet blooms of medium size. Splendid for bedding	35
FUJI SAN—Golden bronze with crimson ring at center	35
NAOMI—Violet red, white tips	35
PINK GEM—True rose pink	35
*PURPLE QUEEN (Gill)—Rich purple. Good stems for cutting	35
QUEEN OF SINGLES—Beautiful pure white with rounded petals. Fine cut flowers	25
*RED DOGWOOD (Gill)—Slightly curved petals of blood red with darker pollen centers	35
RED GIANT—Largest bright scarlet	25
RED INDIAN—Deep bronze; dark plum foliage	35
*ROSE BEAUTY (Gill)—Large rounded petals of deep rose; long, erect stems	25
SALOME—Large, bright yellow. Fine cut flowers	35
TIPS OF SILVER—Maroon with each petal tipped silvery white	35

SPECIAL DAHLIA OFFER

You may select any 5 dahlias priced at 25c for \$1.09; any 4 priced at 35c for \$1.00;
any 3 priced at 50c for \$1.25; any 3 priced at 75c for \$2.00, postpaid.

Gill's Pompon Dahlias

AIMEE—Tiny bronze flowers on long, erect stems. One of the best.	.25
*ALL BRIGHT (Gill)—Deep gold heavily tipped and toned red. Ideal cut flower.	.25
ARTHUR KERLEY—Rich dark red. One of the best.	.25
ATOM—Small, perfect, orange flower. Good stems.	.25
BANTAM—Bright scarlet. Fine stems.	.25
BILLIE—Rich, dark crimson. Very fine.	.25
BOBBY—Deep plum color; very perfect; good stems.	.25
CORA MAY—Salmon pink, cream shadings.	.25
DARKNESS—Maroon on long stems.	.25
DEE DEE—Small lilac, lavender. Good stems.	.25
EDITH MUELLER—Beautiful rose red blended with rich yellow.	.25
*FLOKIST GEM (Gill)—Deep golden yellow, tipped and suffused with orange red. 1½ inches.	.25
GERTRUDE—Crimson red.	.35
GIRLIE—Neat small flowers, on long, erect stems; pretty rosy lavender.	.25
GLOW—Light old rose or coral. Beautiful neat flowers on perfect stems.	.25
*GOLD DROP (Gill)—Pure gold color; 1½ inches; long, erect stems. Ideal cut sort.	.25
GRUS AM WEIN—Crushed strawberry color. Perfect, small flowers on long, erect stems.	.25
HARRY SNOOKS—Rose pink with white center. Small, neat flowers on ideal stems.	.25
HELEN ANITA—Lavender pink with distinct white center.	.25
HONEY—Pale yellow, suffused red on edge.	.25
JOE FETTE—The outstanding pure white pompon. Small, perfect blooms on long, erect stems.	.25
*LEMON DROP (Gill)—Extra fine, clear lemon yellow. Perfect flowers on ideal stems.	.25
LITTLE JIM—A neat flower of deep garnet. Long, erect stems. One of the best.	.25
LYOYD HICKMAN—A neat, small flower of old rose. Long, erect stems.	.25
MARY MUNN—Dark orchid. Ideal cut flower.	.25
MICKEY—Straw color, daintly tipped lavender.	.25
MIKE—Small perfect flowers of scarlet orange. Long, erect stems.	.25
*PATTY (Gill)—Yellow base; tips heavily suffused crimson.	.25
PEGGY ANN—Yellow, shaded red at tips.	.25
ROSA WILMOTH—A fine rose pink on ideal stems; free flowering.	.25
SALAMANDER—Orange tipped red.	.25
SAN TOY—White, very heavily tipped carmine. Splendid little flower on long, erect stems.	.25
SILVERTIPS—Small purple, center and reverse silver gray.	.25
TAKAS' PURPLE—Very small cerise purple.	.25
TIP TOP—Rich crimson.	.25
TOMMY KEITH—Small flowers of crimson tipped white. Very attractive.	.25
VIVID—Rich bright scarlet. A perfect flower well suited for cutting.	.25
YELLOW GEM—Pure yellow. Small, perfect flowers.	.25

Gill's Miniature Dahlias

(Very small flowers in same classes as the large dahlias.)

BABY LEROY, F. D.—A small bloom of bright scarlet produced very freely.	.35
BABY ROYAL, S. C.—Salmon pink with gold shadings.	.35
BEATRICE VON VALKENBERG, F. D.—A small orchid flower.	.35
BISHOP OF LLANDAFF (Duplex)—Rich deep red with dark center.	.35
*CERISE BEAUTY, F. D. (Gill)—Compact, neat, cerise flowers on good stems.	.35
CORONNE, F. D.—Beautiful pure white resembling a gardenia.	.50
DREAMTHORPE, I. D.—Deep tawny gold or bronze, especially fine for cutting.	.35
ELIZABETH PAPE, C.—Rosy salmon-pink. Lighter tips.	.35
GOOD LUCK, (Gut Gluck) I. D.—Bright violet petals tipped white.	.35
HORIZON, S. C.—Yellow with soft red edges and tips.	.50
LITTLE JEWEL, F. D.—Peach blossom pink on perfect stems.	.25
MARQUITA, F. D.—Light pink; blooms profusely.	.25
MAUVENE, C.—Clear lavender mauve. Good stems.	.50
PETER, C.—Yellow, suffused and tipped red.	.35
RED SEA, F. D.—The florist's favorite; a real scarlet, profuse bloomer.	.35
ROSE GEM, F. D.—Rose pink, tinged lavender as the flowers age.	.35
RHODA, I. D.—Glowing orange rose; curling petals, fine cut flower.	.25
SLAVKA DOKOUPLOVA, I. D.—Rich, warm buff. Each petal tipped with white.	.35
SNOWDRIFT, C.—Pure white, perfect form. Very small.	.50
TINY (Duplex)—Apricot, blended with gold.	.35

Gill's Ball or Show Type Dahlias

A. D. LIVONI—This old favorite is still one of the best; color, clear, rich pink; fine stems.	.25
AMERICAN BEAUTY—Large blooms of gorgeous wine crimson; splendid sort.	.25
ANNA REHORST—Deep purple or maroon shade; good stems.	.35
BIG BEN—One of the largest and best show dahlias. Rich raspberry red.	.35
BONNIE BLUE—Dark lavender blue. Perfect stems.	.35
CLARA CLEMENS—Large, deep, rich red, tipped white. Excellent cut flower.	.50
GOLDEN OPPORTUNITY—Giant flowers on strong, erect stems; deep golden yellow.	.35
MAUDE ADAMS—Perfect flowers; white overlaid clear delicate pink. Long, erect stems.	.25
*MOLALLA (Gill)—Fine yellow, tipped white. Long, erect stems; extra fine.	.25
*NETARTS (Gill)—White variegated with crimson; long, erect stems. One of the best variegated.	.35
NORMA—Large flowers on good stems; bright orange buff; fine cut flowers.	.25
NORMA—Large flowers on good stems; bright orange buff; fine cut flowers.	.25
RED GOLD MEDAL—Brilliant orange scarlet; a sport from Gold Medal. Long, erect stems.	.35
ROSEBUD—White, effectively edged with rose pink; long, erect stems; extra good.	.25
*SNOW CAP (Gill)—Large, pure white. Good stems for cutting.	.50
*SUPT. AMRKIN—Large, bright rose-pink; splendid stems and a fine cut flower.	.35
*WHITE LIVONI (Gill)—Pure white counterpart of A. D. Livoni. Long, erect stems.	.25
W. W. RAWSON—Large quilled flower; white overlaid with lavender blush; long, erect stems.	.35

Gill's Select Gladiolus

Gladiolus bulbs should be planted 4 inches deep in good rich soil well prepared. Planting time will depend upon your choice. March 1 to June 1 will usually permit full bloom.

PRICES GIVEN ARE POSTPAID—6 at dozen rate. Only one variety may be used to secure the dozen rate. We supply good healthy bulbs of large size that will give strong spikes of bloom.

	Doz.
ALBATROSS—Large pure white, lily shaped flowers. Tall spikes. Each 5c.....	.50
ALLEMANIA—New. Giant spikes and huge blooms of brilliant red. Each 10c.....	1.00
ARABELLA—Giant black red. Each 15c.....	1.50
BAGDAD—Extra large, smoky rose. Each 5c.....	.50
BETTY NUTHALL—Giant blooms. Glowing orange pink with light yellow throat. Each 5c.....	.50
BLEEDING HEART—White tinted pink; striking red blotch. Each 5c.....	.50
BLUE BEAUTY—Early. Best violet blue. Each 20c.....	2.00
BONNEVILLE—Ruffled, deep salmon pink. Each 5c.....	.50
BRIGHTSIDE—Orange and yellow. Each 5c.....	.50
CHARLES DICKENS—Tall, red purple. One of the best. Each 5c.....	.50
COMMANDER KOEHL—Immense dark scarlet. 2 for 15c.....	.60
D. A. HAY—A champion pink and cream. Each 5c.....	.50
DEBONAIR—La France pink, cream throat. Very fine. Each 5c.....	.50
DR. F. E. BENNETT—Fine scarlet. Large flower, tall spikes. Each 5c.....	.50
DUNA—Beautiful soft, light pink. Each 5c.....	.50
GATE OF HEAVEN—Wonderful, ruffled, clear, deep yellow. Each 5c.....	.50
GIANT NYMPH—Large, light salmon rose. One of the best pinks. Each 5c.....	.50
GOLDEN GODDESS (Salbach—Patented)—Rich, golden yellow. Each 10c; 3 for 25c; 6 for 50c.....	.90
GRAND OPERA (Salbach—Patented)—Between La France and Geranium pink. Very soft, but clear in tone. Large bulbs, each \$1.00; medium bulbs, each 50c.....	
GREENLIGHT—Large white with a greenish cast. Each 30c.....	3.00
JOHANN S. BACH—Exhibition salmon red. 2 for 15c.....	.60
HELLIGTUM—Tallest of all whites. Each 15c.....	1.50
LA PALOMA—Early. Vivid orange flowers of heavy texture. Tall spikes. Each 5c.....	.50
MILDRED LOUISE—Strawberry pink. Very fine. Each 5c.....	.50
MILFORD—A better "Heavenly Blue." Very fine. 2 for 15c.....	.60
MINUET—Finest light lavender. Large flowers on tall erect spike. Each 5c.....	.50
MOORISH KING—Large, fine leather-like maroon flowers. 2 for 15c.....	.60
MOTHER MACHREE—Smoky salmon blended with lavender and gold. 2 for 15c.....	.60
MR. WM. CUTHBERTSON—Ruffled, cherry pink. Each 5c.....	.50
NEW ERA—New. Ruffled, pure pink. Very beautiful leathery flowers. Each 25c.....	2.50
PELEGRINA—Large deep blue. The best dark blue to date. Each 5c.....	.50
PFITZER'S TRIUMPH—Immense blooms of salmon orange with deep salmon red blotch. Each 5c.....	.50
PICARDY—Immense blooms of soft shrimp pink. A wonderful flower. Each 5c.....	.50
RAMESES—Giant blooms. Deep aster purple. 2 for 15c.....	.60
RED PHIPPS—Pure scarlet. 2 for 15c.....	.60
RIMA—New. Wonderful light lavender pink. Each 50c.....	5.00
ROSE MARIE PFITZER—Ruffled flowers of light cream tinted pink. Large spikes. 2 for 15c.....	.60
SALBACH'S ORCHID—Lavender pink. Excellent for forcing. Each 5c.....	.50
SENORITA—Ruffled, yellow edged red. 2 for 15c.....	.60
SHIRLEY TEMPLE—Beautiful light cream with deeper cream throat. Each 10c.....	.75
SMILING MAESTRO—Large smoky salmon pink. 2 for 15c.....	.60
STAR OF BETHLEHEM—Fine exhibition white. 2 for 15c.....	.60
TIP TOP—Immense, wide open scarlet flowers. Very fine. Each 10c.....	.75
VAGABOND PRINCE—Bronze red, orange blotch. Each 10c.....	.75
WASAGA—(Prim. Grand) Clear golden buff, somewhat ruffled. Each 5c.....	.50
W. H. PHIPPS—Beautiful salmon pink. Lower petals slightly flecked. Each 5c.....	.50
WUERTEMBURGIA—Dazzling fiery scarlet with cream throat. Each 5c.....	.50
YELLOW PERFECTION—Early. Best pure yellow. Each 5c.....	.50

GLADIOLUS IN MIXTURE

	Doz.	
GILL'S FANCY MIXTURE—A very high grade mixture, mixed from named sorts.....	\$.50	\$3.50
FLORIST MIXTURE—A very good mixture of various colors, well worth the price.....	.25	1.75
PRIMULINUS MIXTURE—Rare shades of rich, yellow, rose, salmon, scarlet, etc.....	.40	2.50

GLORIOUS GLADIOLUS OFFER

90 medium size bulbs. 1 to 1½ inches in diameter, in splendid mixture, postpaid, for \$1.00. 45 medium size bulbs 60c. These will make fine blooms the first season. You will be surprised at the value you receive. This offer enables everyone to have a fine gladiolus garden. Wonderful value.

FLORIST GLADIOLUS OFFER

55 large size bulbs, 1½ inches up, in a fine mixture, postpaid, for \$1.00. 28 large size bulbs 60c. This mixture is made from named standard sorts and newer introductions unlabeled and comprises large flowering varieties with good cut flower qualities, chosen so as to make a good range of colors. Our selection of varieties.

MONTBRETIA

YELLOW and BRONZE MIXED—Large, fine quality bulbs.....	Doz.	\$.25
--	------	--------

RADIO GARDEN TALKS BY RAY W. GILL

Will be given over stations KGW, Portland; KOMO, Seattle; KHQ, Spokane; KIDO, Boise, on Sunday afternoons beginning February 2nd and continuing during February, March and April. Watch the Radio programs and newspapers for further information.

We offer this page of real bargains with the idea of encouraging a trial of our various lines, and we assure all that these are not makeshift bargains to unload worthless stock, but are genuine offers of the same standard of goods with which we supply our regular trade. All of the goods offered are for prompt delivery, weather conditions being favorable. Dahlias will be sent in April. All prices are postpaid.

FREE PREMIUM ON EARLY ORDERS BEFORE FEBRUARY 20, 1941

On all orders, amounting to \$1.00 or more, received by us before February 20, 1941 (no later), we will include free, your choice of either 10 gladiolus bulbs of our selection or our selection of 3 packets of flower seed. The selection of varieties for this offer must be left to us. Order today, don't put it off or you may be too late. Besides getting the early premium we can give you better service if your order comes before the spring rush.

GILL'S DAHLIA COLLECTIONS

Since it is impossible for us to gauge the amount of sales upon any variety in advance, we often have a surplus of dahlias left in very good sorts. This enables us to make the remarkably low rates on collections given below. These bulbs will be labeled with their correct name and no two alike, chosen with regard to color; however, they must be entirely our own selection. Prices are postpaid.

- No. 1—12 CACTUS DAHLIAS, good standard sorts, \$1.60; six for 95c.
- No. 2—6 PEONY DAHLIAS, for 90c.
- No. 3—12 DECORATIVE, \$1.50; six for 90c.
- No. 4—12 SHOW DAHLIAS, \$1.50; six for 90c.
- No. 5—6 SINGLE DAHLIAS for 90c.
- No. 6—6 NEW DAHLIAS, new sorts in main classes, \$1.50.
- No. 7—8 POMPON DAHLIAS for \$1.00.
- No. 8—STANDARD DAHLIAS, in main classes, including Cactus, Decorative, Peony and Show, twelve for \$1.65; six for \$1.00.

CHEERFUL GARDEN COLLECTION

8 BULBS WORTH \$2.50 FOR \$1.00 POSTPAID

We offer 8 Dahlia Bulbs, our selection of varieties, all labeled with their correct name and worth \$2.50 at regular prices. This collection made a big hit last season, our customers being surprised at the great value we gave. The collections will be made up mainly from cactus, peony and decorative types.

CUT FLOWER DAHLIA COLLECTION

Twelve special cut flower sorts, worth \$4.95, postpaid for \$2.75. All have fine stems, bloom freely and last well when cut. We use these for our cut flower trade. (Save \$2.20).

- Champoeg, F.D. Canary yellow center, shading to peach red..... .50
 - Congressman Wolverton, I.D. Salmon pink..... .35
 - Earl Williams, F.D. Scarlet, tipped white..... .50
 - Jane Ross, I.D. Velvety, purple maroon..... .50
 - Josephine G., S.C. Rose pink..... .35
 - Maryland Orange, S.C. Orange, red suffusion..... .35
 - Mrs. Carl Salbach, F.D. Mauve pink..... .35
 - Mrs. Geo. Skeen, F.D. Shrimp pink..... .35
 - Patricia Weyman, F.D. White, lavender veining..... .50
 - Seaside Beauty, F.D. Rich ruby red, tips of outer petals dove color..... .50
 - Treasure Island, F.D. Gold, rose suffusion..... .35
 - Waldheim Sunshine, I.D. Deep yellow..... .35
- \$4.95

BEAUTIFUL YARD COLLECTION

Twelve dahlias, all fine varieties, worth \$4.95, postpaid for \$2.50. (Save \$2.45).

- Avonella, F.D. Amaranth purple..... .35
- Chemar's Masterpiece, S.C. Rich, orchid pink..... .35
- Cigarette, S.C. Cream, edged pomegranate red..... .50
- Grace Curling, I.D. Lilac, shading to white..... .35
- Harriet Thompson, I.D. Orange buff, reverse red..... .35
- Indian Summer, F.D. Salmon, gold, silver sheen..... .50
- Jersey Beacon, F.D. Chinese scarlet..... .35
- Meta Seammell, F.D. Center pale pink, shading deeper pink at tips..... .35
- Mrs. G. LeBoutillier, F.D. Rich, velvety carmine..... .50
- Safrano, F.D. Yellow, overlaid scarlet..... .50
- Satan, S.C. Flaming red..... .50
- Tommy Atkins, I.D. Lustrous scarlet..... .35

\$4.95

GILL'S

OREGON DAHLIA COLLECTION

- Six fine dahlias, all recent introductions by Gill Bros. worth \$3.35, sent postpaid \$1.50. (Save \$1.85).
 - Bonneville, S.C. Ivory white, yellow shadings..... .75
 - Improved Clown, F.D. Creamy yellow, splashed and striped crimson..... .50
 - Miss Portland, F.D. Beautiful, watermelon pink..... .50
 - Montana Beauty, I.D. Yellow, suffused violet and rose, giving a tan effect..... .50
 - Sparkles, F.D. Bright scarlet, tipped white..... .75
 - Summer Girl, F.D. Light lemon yellow..... .35
- \$3.35

MINIATURE DAHLIA COLLECTION

Five dahlias with very small flowers, but in same classes as the large dahlias, all excellent for cutting and worth \$1.55, postpaid for \$1.00. (Save 55c).

- Good Luck, I.D. Bright violet, tipped white..... .35
 - Marquita, F.D. Light pink..... .25
 - Red Sea, F.D. Bright scarlet..... .35
 - Rhoda, I.D. Glowing orange rose..... .25
 - Rose Gem, F.D. Rose pink, tinged lavender..... .35
- \$1.55

(See front cover for "Big Four" Dahlia Collection)

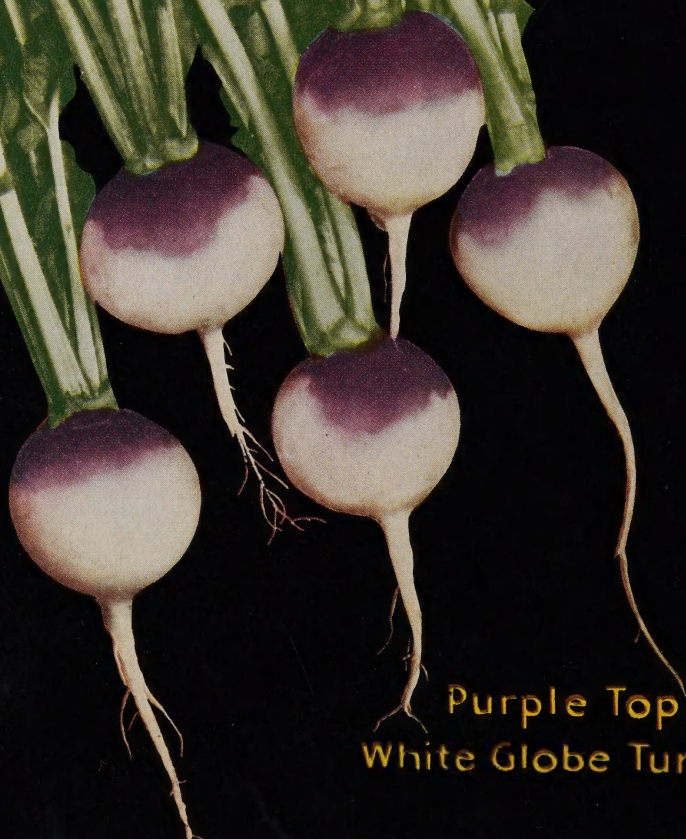
HOME VEGETABLE COLLECTION

Thirty-six regular sized packets, worth \$2.55 sent postpaid for \$1.75. Positively no changes permitted. (Save 80c)

- | | Regular Price |
|---|---------------|
| BEANS, Burpee's Stringless Green Pod (Bush) | .10 |
| BEANS, Kentucky Wonder (Pole) | .10 |
| BEANS, Pencil Pod Black Wax (Bush) | .10 |
| BEEF, Detroit Dark Red Special | .05 |
| BROCCOLI, Green Sprouting | .10 |
| BRUSSELS SPROUTS, Long Island | .05 |
| CABBAGE, Golden Acre (Early) | .10 |
| CABBAGE, Oregon Ballhead (Late) | .10 |
| CARROT, Nantes Special (Early) | .10 |
| CARROT, Oregon Chantenay (Later) | .10 |
| CELERY CABBAGE, Paoting | .10 |
| SWEET CORN, Golden Early Market | .10 |
| SWEET CORN, Improved Golden Bantam | .10 |
| CUCUMBER, Davis Perfect (for slicing) | .05 |
| CUCUMBER, Boston Pickling (for pickling) | .05 |
| DILL, Mammoth | .05 |
| KALE, Tall Green Scotch Curled | .05 |
| LETTUCE, New York No. 12 | .05 |
| MUSKMELON, Extra Early Knight | .05 |
| MUSKMELON, Hales Best Early | .05 |
| ONION, White Globe (use green or dry) | .10 |
| ONION, Oregon Yellow Danvers (dry onions) | .05 |
| PARSNIP, Success | .05 |
| PEAS, Laxton Progress (Dwarf early) | .10 |
| PEAS, Giant Stride (Dwarf late) | .10 |
| PUMPKIN, Orange Winter Luxury | .05 |
| RADISH, Sparkler White Tipped | .05 |
| RADISH, White Icicle | .05 |
| RADISH, Scarlet China (Winter) | .05 |
| RUTABAGA, Imp. Purple Top Yellow | .05 |
| SQUASH, Golden Delicious | .10 |
| SQUASH, Zucchini (Summer) | .05 |
| SPINACH, New Giant Leaf | .05 |
| TURNIP, Extra Early White Milan | .05 |
| TURNIP, Purple Top White Globe | .05 |
| WATERMELON, Black Seeded Ice Cream | .05 |

\$2.55

GILL BROS. SEED CO. 1941



Purple Top
White Globe Turnip